

## Catalog #: 4917

### Aliases

CAP2; Cyclase Associated Actin Cytoskeleton Regulatory Protein 2; Adenylyl Cyclase-Associated Protein 2; CAP 2; CAP, Adenylate Cyclase-Associated Protein, 2 (Yeast); CAP, Adenylate Cyclase-Associated Protein, 2; 2810452G09Rik; CMD2I

### Background

Gene Name: CAP2

NCBI Gene Entry: [10486](#)

UniProt Entry: [P40123](#)

### Application Information

Molecular Weight: Predicted, 53 kDa; observed, 50 kDa

Clonality: Rabbit monoclonal antibody

Clone ID: 24GB13745

Species Reactivity: Human, rat

Applications Tested: Western blotting (WB), flow cytometry (FCM), immunocytochemistry (IC)

### Immunogen

A synthesized peptide derived from human CAP2

### Isotype

Rabbit IgG

### Storage Buffer

Supplied in PBS (pH 7.4) containing 50% glycerol, and 0.02% sodium azide.

### Storage

Store at -20 °C for one year.

### Recommended Dilutions

Western Blotting (WB): 1:1,000-1:5,000

Flow Cytometry (FCM): 1:2,000

Immunocytochemistry (IC): 1:100-1:1,000

**Note:** This product is for research use only.

---

#### SUPPORT

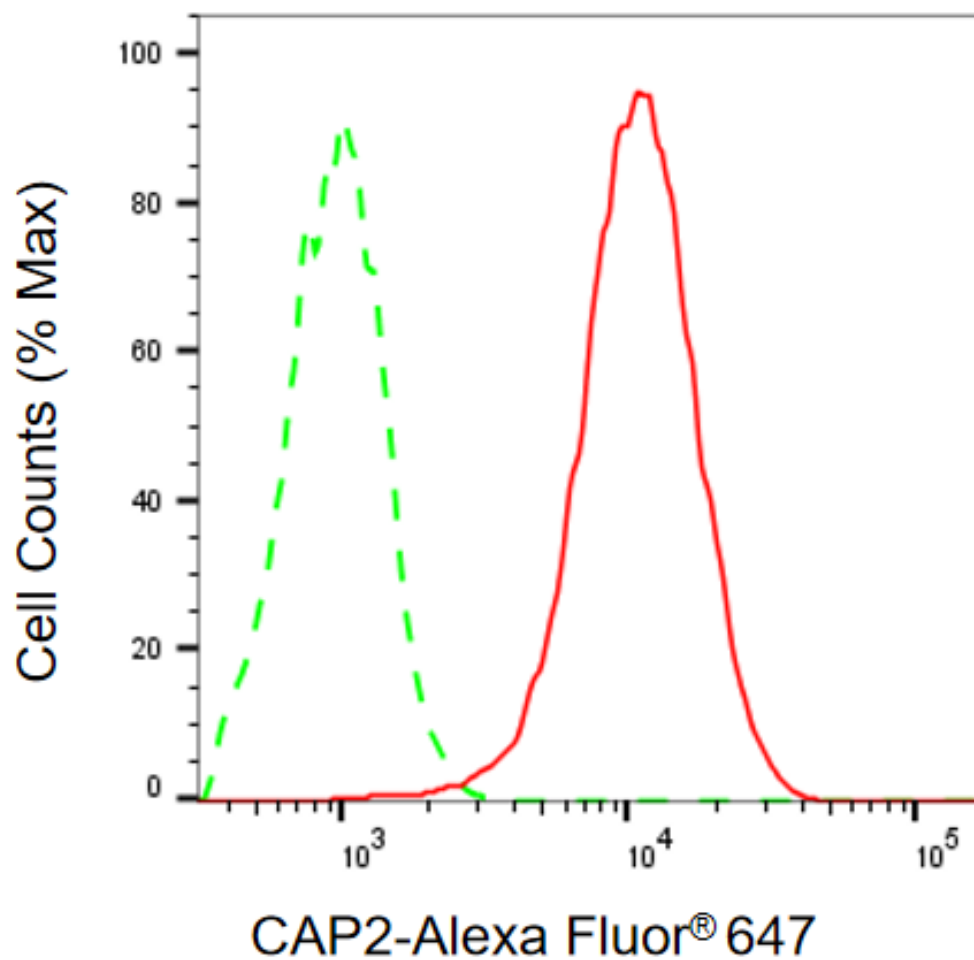
SUPPORT@GENUINBIOTECH.COM  
TEL: +1-540-855-7041

#### ORDERS

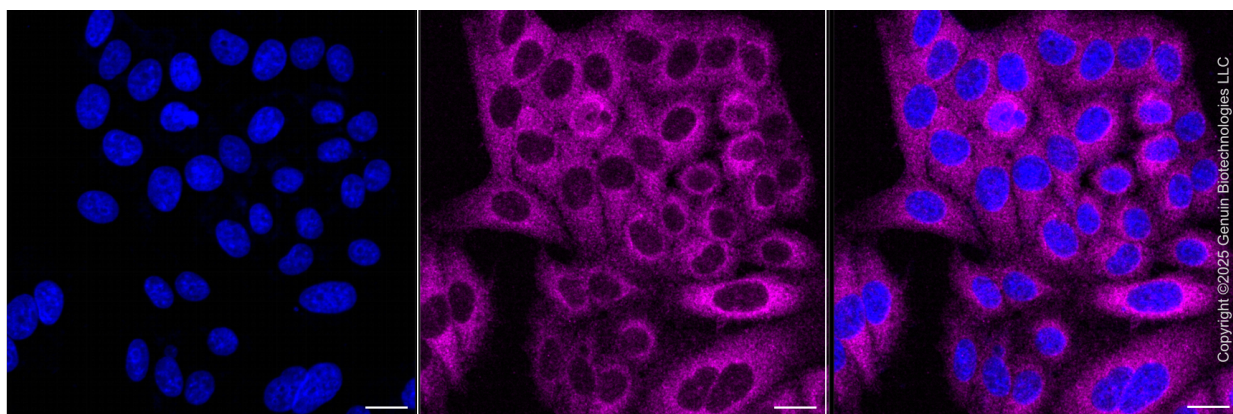
SALES@GENUINBIOTECH.COM  
FAX: +1-540-855-7041

[WWW.GENUINBIOTECH.COM](http://WWW.GENUINBIOTECH.COM)

## Validation Data



Flow cytometric analysis of CAP2 expression in HepG2 cells using anti-CAP2 antibody (Cat#4917, 1:2,000). Green, isotype control; red, CAP2.



## SUPPORT

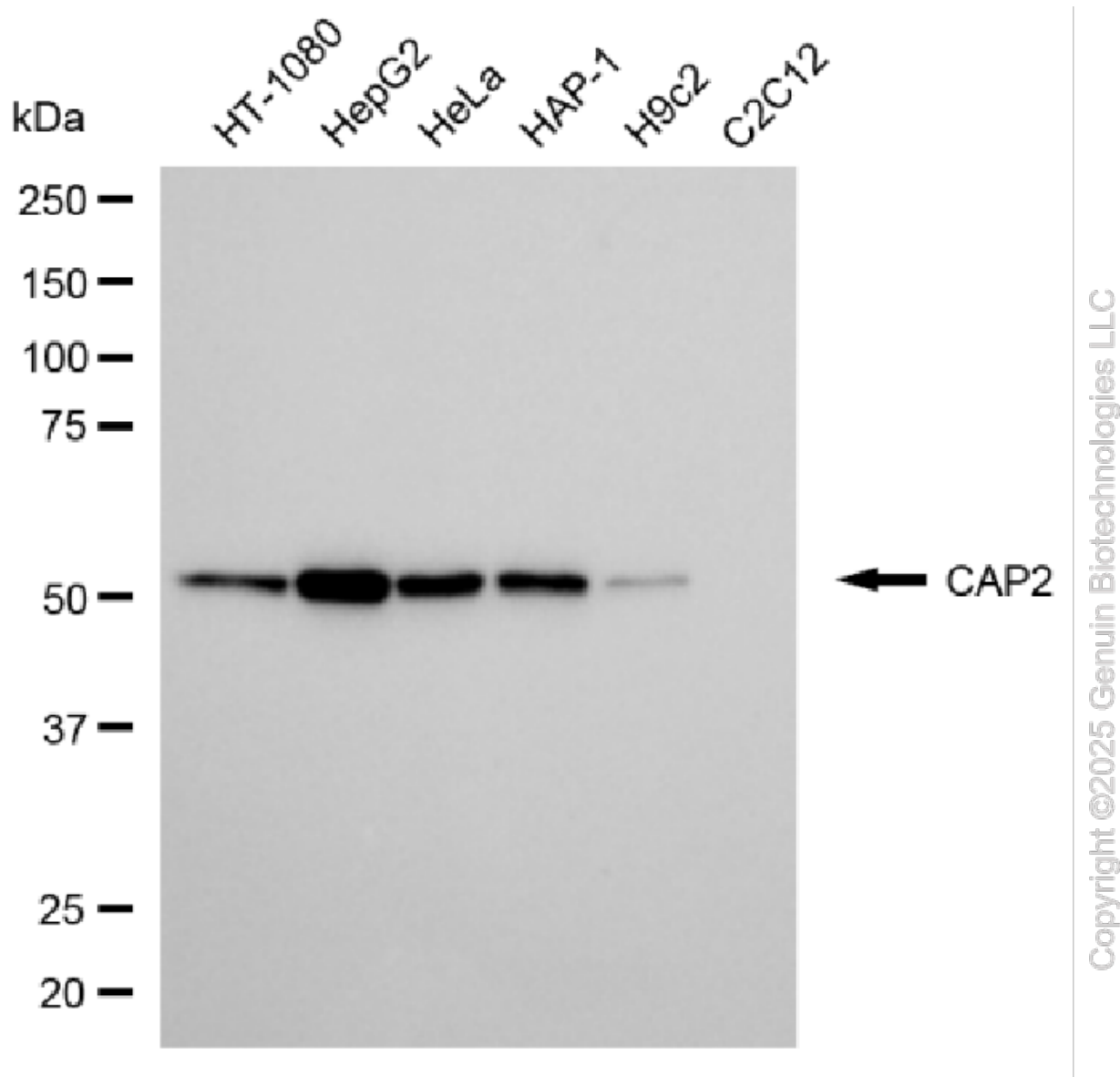
SUPPORT@GENUINBIOTECH.COM  
TEL: +1-540-855-7041

## ORDERS

SALES@GENUINBIOTECH.COM  
FAX: +1-540-855-7041

WWW.GENUINBIOTECH.COM

Immunocytochemical staining of HepG2 cells with anti-CAP2 antibody (Cat#4917, 1:1,000) . Nuclei were stained blue with DAPI; CAP2 was stained magenta with Alexa Fluor® 647. Images were taken using Leica stellaris 5. Protein abundance based on laser Intensity and smart gain: Medium. Scale bar, 20  $\mu$ m.



Western blotting analysis using anti-CAP2 antibody (Cat#4917). Total cell lysates (30  $\mu$ g) from various cell lines were loaded and separated by SDS-PAGE. The blot was incubated with anti-CAP2 antibody (Cat#4917, 1:5,000) and HRP-conjugated goat anti-rabbit secondary antibody (Cat#201, 1:20,000) respectively. Image was developed using NaQ™ ECL Substrate Kit (Cat#716).

## SUPPORT

SUPPORT@GENUINBIOTECH.COM  
TEL: +1-540-855-7041

## ORDERS

SALES@GENUINBIOTECH.COM  
FAX: +1-540-855-7041

[WWW.GENUINBIOTECH.COM](http://WWW.GENUINBIOTECH.COM)