

## Catalog #: 4918

## Aliases

PACSIN3; Protein Kinase C And Casein Kinase Substrate In Neurons 3; SDPIII; Protein Kinase C And Casein Kinase Substrate In Neurons Protein 3; SH3 Domain-Containing Protein 6511; Syndapin III

## Background

Gene Name: PACSIN3

NCBI Gene Entry: [29763](#)

UniProt Entry: [Q9UKS6](#)

## Application Information

Molecular Weight: Predicted, 48 kDa; observed, 48 kDa

Clonality: Rabbit monoclonal antibody

Clone ID: 24GB13750

Species Reactivity: Human, mouse

Applications Tested: Western blotting (WB), immunocytochemistry (IC), flow cytometry (FCM)

## Immunogen

A synthesized peptide derived from human PACSIN3

## Isotype

Rabbit IgG

## Storage Buffer

Supplied in PBS (pH 7.4) containing 50% glycerol, and 0.02% sodium azide.

## Storage

Store at -20 °C for one year.

## Recommended Dilutions

Western Blotting (WB): 1:1,000-1:5,000

Immunohistochemistry (IHC): 1:100-1:1,000

Flow Cytometry (FCM) : 1:2,000

**Note:** This product is for research use only.

---

### SUPPORT

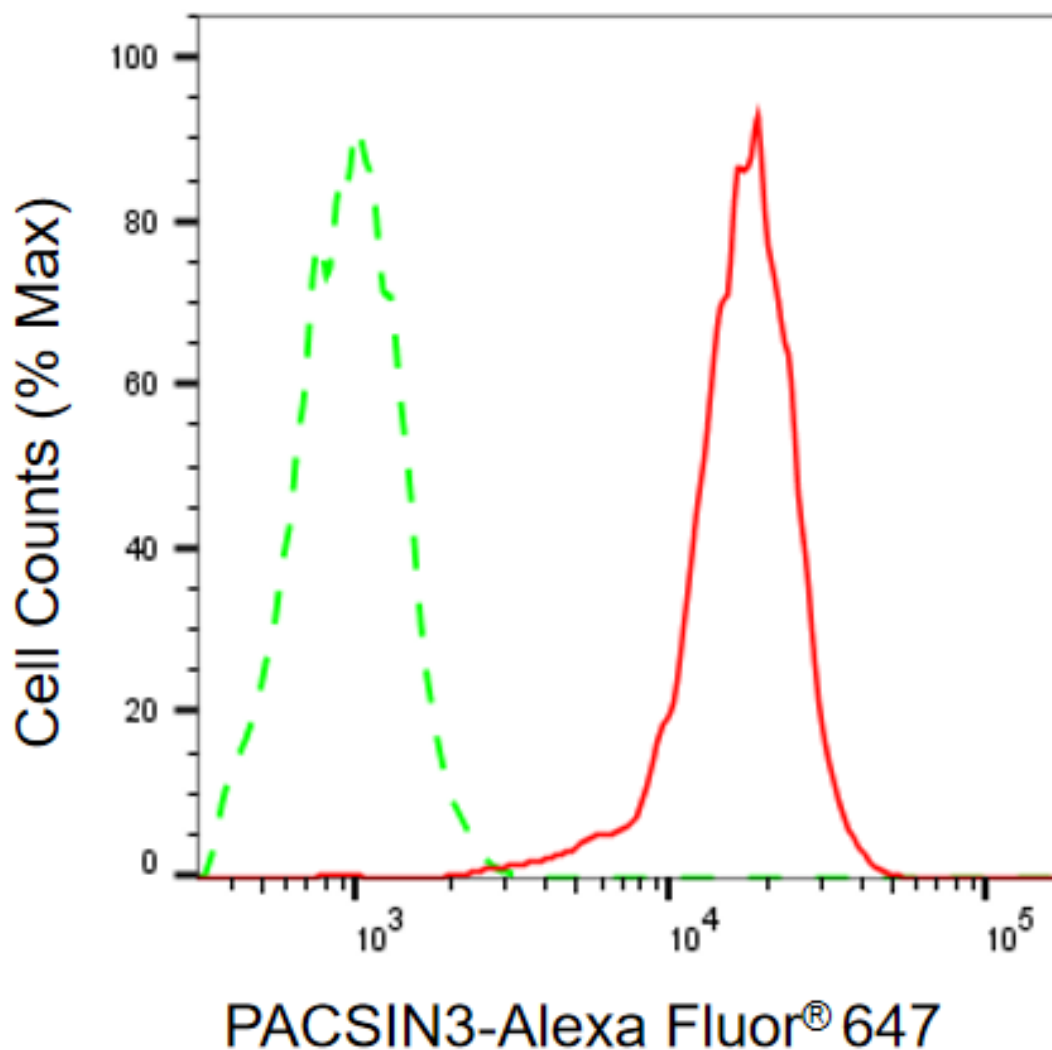
SUPPORT@GENUINBIOTECH.COM  
TEL: +1-540-855-7041

### ORDERS

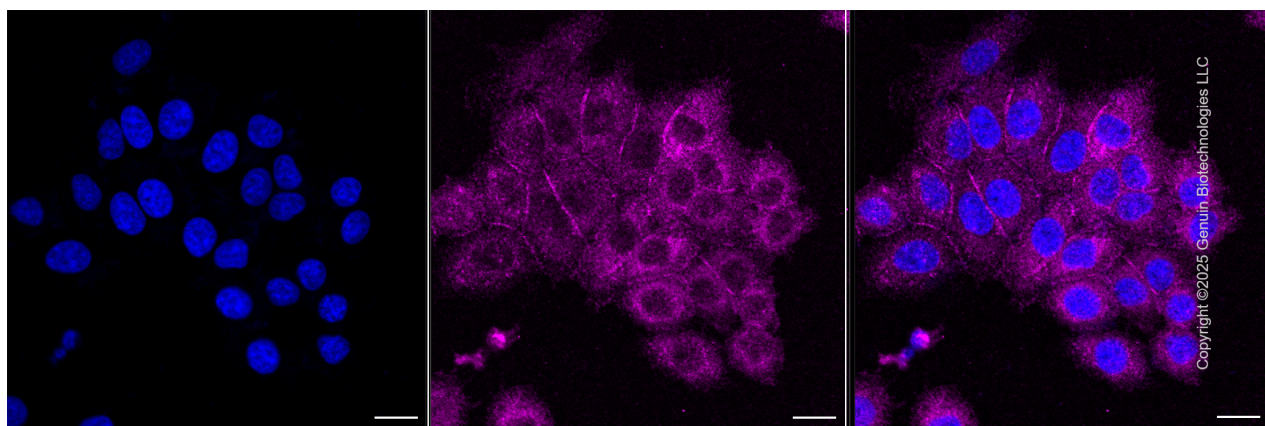
SALES@GENUINBIOTECH.COM  
FAX: +1-540-855-7041

[WWW.GENUINBIOTECH.COM](http://WWW.GENUINBIOTECH.COM)

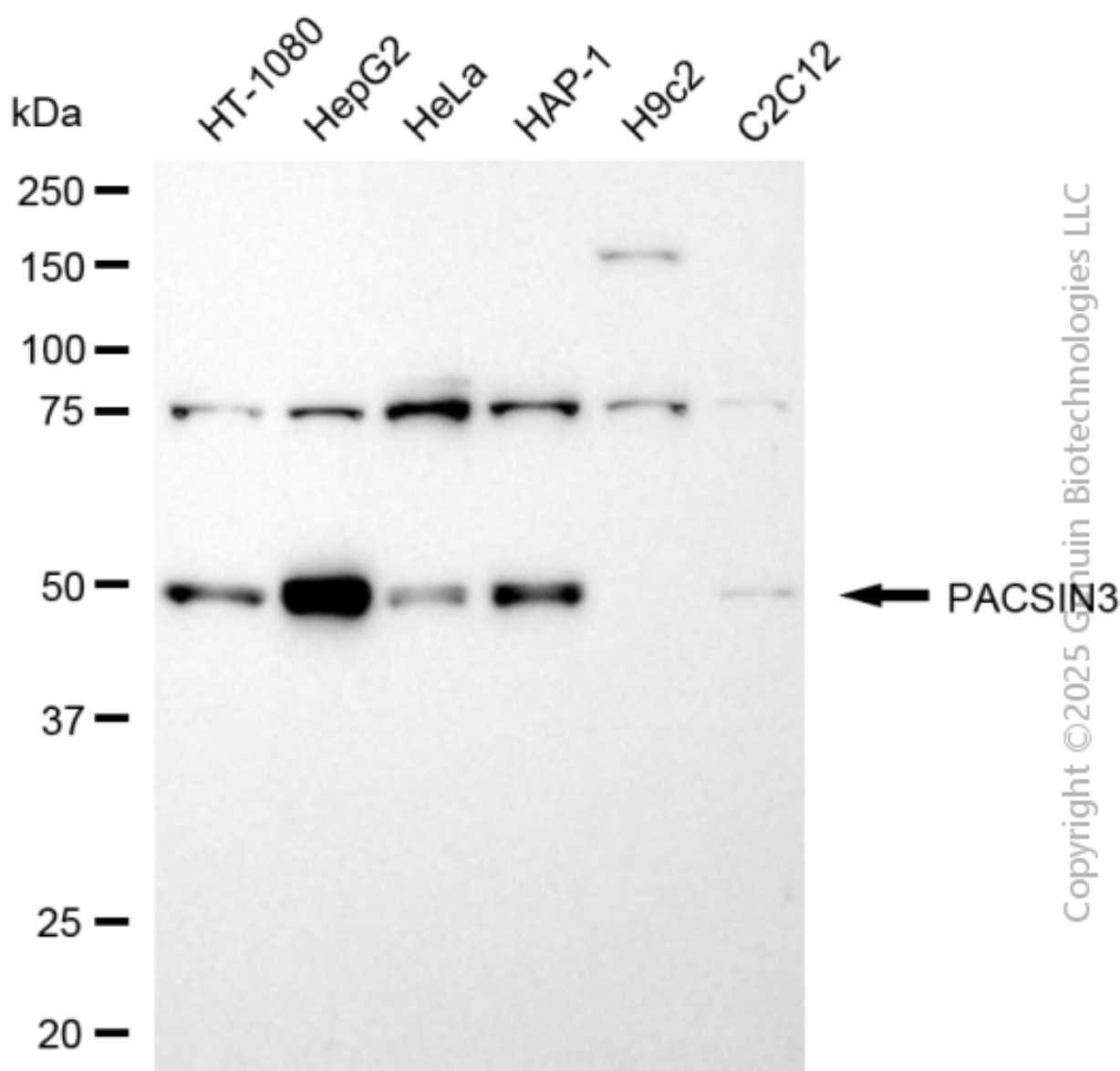
## Validation Data



Flow cytometric analysis of PACSIN3 expression in HepG2 cells using anti-PACSIN3 antibody (Cat#4918, 1:2,000). Green, isotype control; red, PACSIN3.



Immunocytochemical staining of HepG2 cells with anti-PACSIN3 antibody (Cat#4918, 1:1,000) . Nuclei were stained blue with DAPI; PACSIN3 was stained magenta with Alexa Fluor® 647. Images were taken using Leica stellaris 5. Protein abundance based on laser Intensity and smart gain: Medium. Scale bar, 20  $\mu$ m.



Western blotting analysis using anti-PACSIN3 antibody (Cat#4918). Total cell lysates (30  $\mu$ g) from various cell lines were loaded and separated by SDS-PAGE. The blot was incubated with anti-PACSIN3 antibody (Cat#4918, 1:5,000) and HRP-conjugated goat anti-rabbit secondary antibody (Cat#201, 1:20,000) respectively. Image was developed using NaQ™ ECL Substrate Kit (Cat#716).