

Anti-Phospho-Filamin A/B (Ser2152/Ser2107) Rabbit Monoclonal Antibody



Catalog #: 4920

Aliases

FLNB; Filamin B; ABP-278; TABP; TAP; FLN1L; FH1; Larsen Syndrome 1 (Autosomal Dominant); Actin-Binding-Like Protein; Actin Binding Protein 278; Thyroid Autoantigen; Filamin Homolog 1; Filamin B, Beta; ABP-280 Homolog; Beta-Filamin; Filamin-B; Filamin-3; FLN-B; LRS1; Filamin B, Beta (Actin Binding Protein 278); Truncated Actin-Binding Protein; Truncated ABP; Beta Filamin; ABP-280; FLN3; AOI; SCT; Fh1

Background

Gene Name: FLNB

NCBI Gene Entry: [2317](#)

UniProt Entry: [O75369](#)

Application Information

Molecular Weight: Predicted, 278 kDa; observed, 281 kDa

Clonality: Rabbit monoclonal antibody

Clone ID: 24GB13760

Species Reactivity: Human, mouse, rat

Applications Tested: Western blotting (WB), immunocytochemistry (IC), flow cytometry (FCM)

Immunogen

A synthesized peptide derived from human Phospho-Filamin A/B (Ser2152/Ser2107)

Isotype

Rabbit IgG

Storage Buffer

Supplied in PBS (pH 7.4) containing 50% glycerol, and 0.02% sodium azide.

Storage

Store at -20 °C for one year.

Recommended Dilutions

Western Blotting (WB): 1:1,000-1:5,000

Immunocytochemistry (IC): 1:100-1:1,000

Flow Cytometry (FCM) : 1:2,000

SUPPORT

SUPPORT@GENUINBIOTECH.COM
TEL: +1-540-855-7041

ORDERS

SALES@GENUINBIOTECH.COM
FAX: +1-540-855-7041

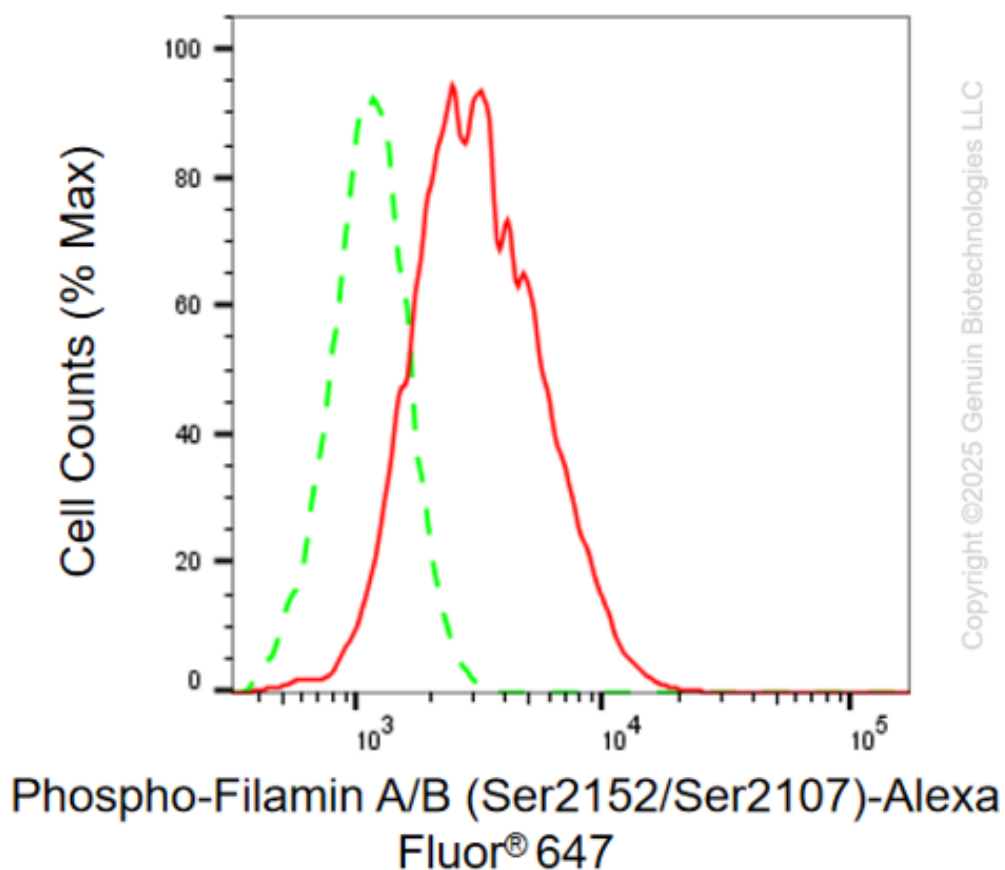
WWW.GENUINBIOTECH.COM

Anti-Phospho-Filamin A/B (Ser2152/Ser2107) Rabbit Monoclonal Antibody

PAGE 2

Note: This product is for research use only.

Validation Data



Flow cytometric analysis of Phospho-Filamin A/B (Ser2152/Ser2107) expression in C2C12 cells using anti-Phospho-Filamin A/B (Ser2152/Ser2107) antibody (Cat#4920, 1:1,000). Green, isotype control; red, Phospho-Filamin A/B (Ser2152/Ser2107).

SUPPORT

SUPPORT@GENUINBIOTECH.COM
TEL: +1-540-855-7041

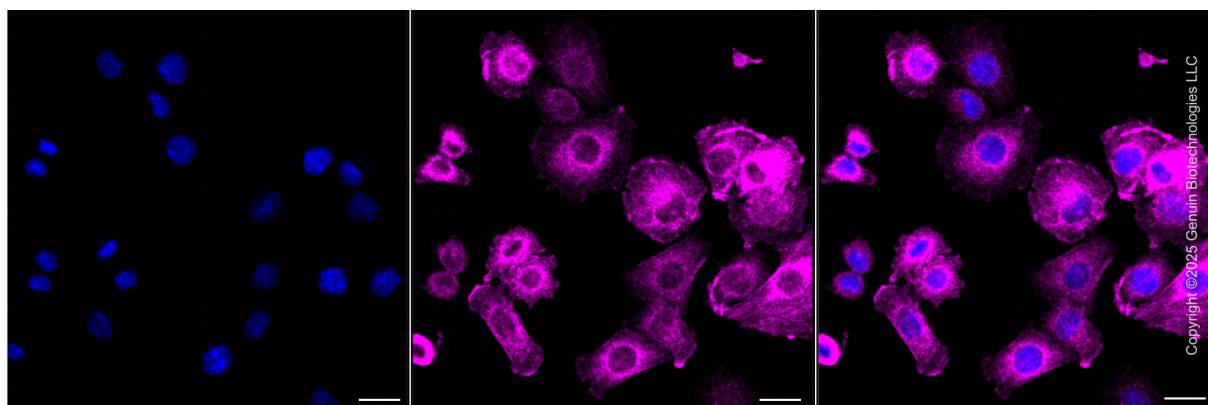
ORDERS

SALES@GENUINBIOTECH.COM
FAX: +1-540-855-7041

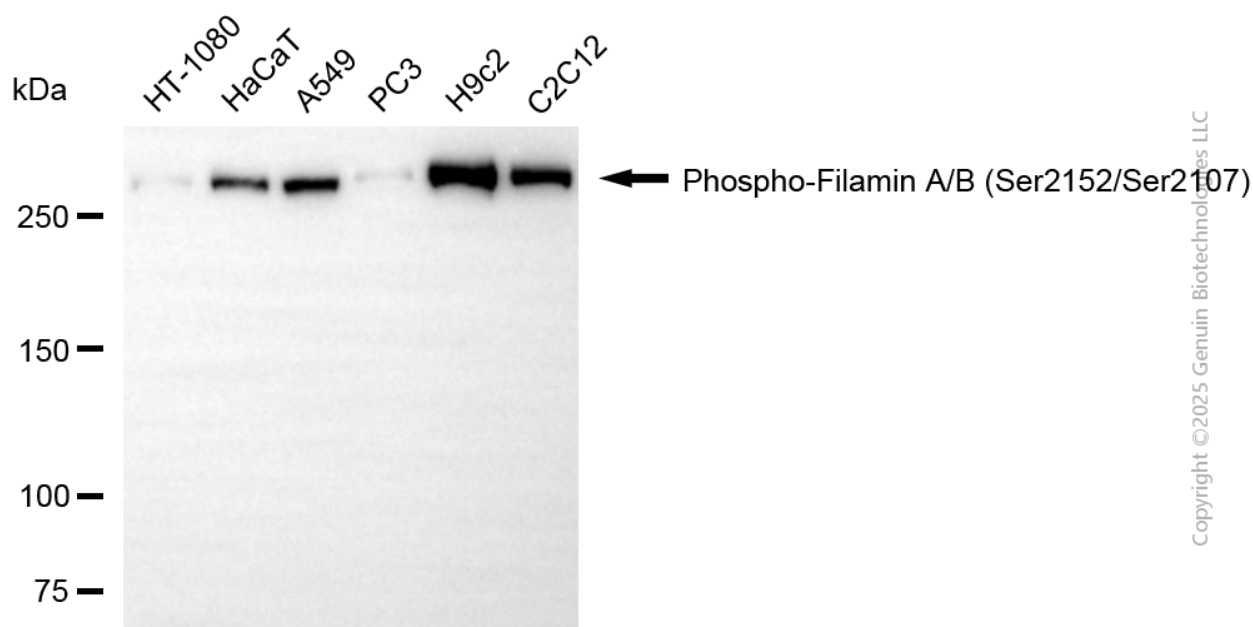
WWW.GENUINBIOTECH.COM

Anti-Phospho-Filamin A/B (Ser2152/Ser2107) Rabbit Monoclonal Antibody

PAGE 3



Immunocytochemical staining of C2C12 cells with anti-Phospho-Filamin A/B (Ser2152/Ser2107) antibody (Cat#4920, 1:1,000). Nuclei were stained blue with DAPI; Phospho-Filamin A/B (Ser2152/Ser2107) was stained magenta with Alexa Fluor® 647. Images were taken using Leica stellaris 5. Protein abundance based on laser Intensity and smart gain: Medium. Scale bar, 20 μ m.



Western blotting analysis using anti-phospho-filamin A/B (Ser2152/Ser2107) antibody (Cat#4920). Total cell lysates (30 μ g) from various cell lines were loaded and separated by SDS-PAGE. The blot was incubated with anti-phospho-filamin A/B (Ser2152/Ser2107) antibody (Cat#4920, 1:5,000) and HRP-conjugated goat anti-rabbit secondary antibody (Cat#201, 1:20,000) respectively. Image was developed using NaQ™ ECL Substrate Kit (Cat#716).

SUPPORT

SUPPORT@GENUINBIOTECH.COM
TEL: +1-540-855-7041

ORDERS

SALES@GENUINBIOTECH.COM
FAX: +1-540-855-7041

WWW.GENUINBIOTECH.COM