

Catalog #: 4924

Aliases

IL1RAP; Interleukin 1 Receptor Accessory Protein; IL-1RAcP; C3orf13; IL1R3; Interleukin-1 Receptor Accessory Protein; IL-1 Receptor Accessory Protein; Interleukin-1 Receptor 3; Interleukin-1 Receptor Accessory Protein Beta; EC 3.2.2.6; IL-1R-3; IL-1R3

Background

Gene Name: IL1RAP

NCBI Gene Entry: [3556](#)

UniProt Entry: [Q9NPH3](#)

Application Information

Molecular Weight: Predicted, 65 kDa; observed, 74 kDa

Clonality: Rabbit monoclonal antibody

Clone ID: 24GB13780

Species Reactivity: Human, mouse, rat

Applications Tested: Western blotting (WB), flow cytometry (FCM)

Immunogen

Recombinant protein of human IL-1RAcP

Isotype

Rabbit IgG

Storage Buffer

Supplied in PBS (pH 7.4) containing 50% glycerol, and 0.02% sodium azide.

Storage

Store at -20 °C for one year.

Recommended Dilutions

Western Blotting (WB): 1:500-1:2,500

Flow Cytometry (FCM): 1:2,000

Note: This product is for research use only.

Validation Data

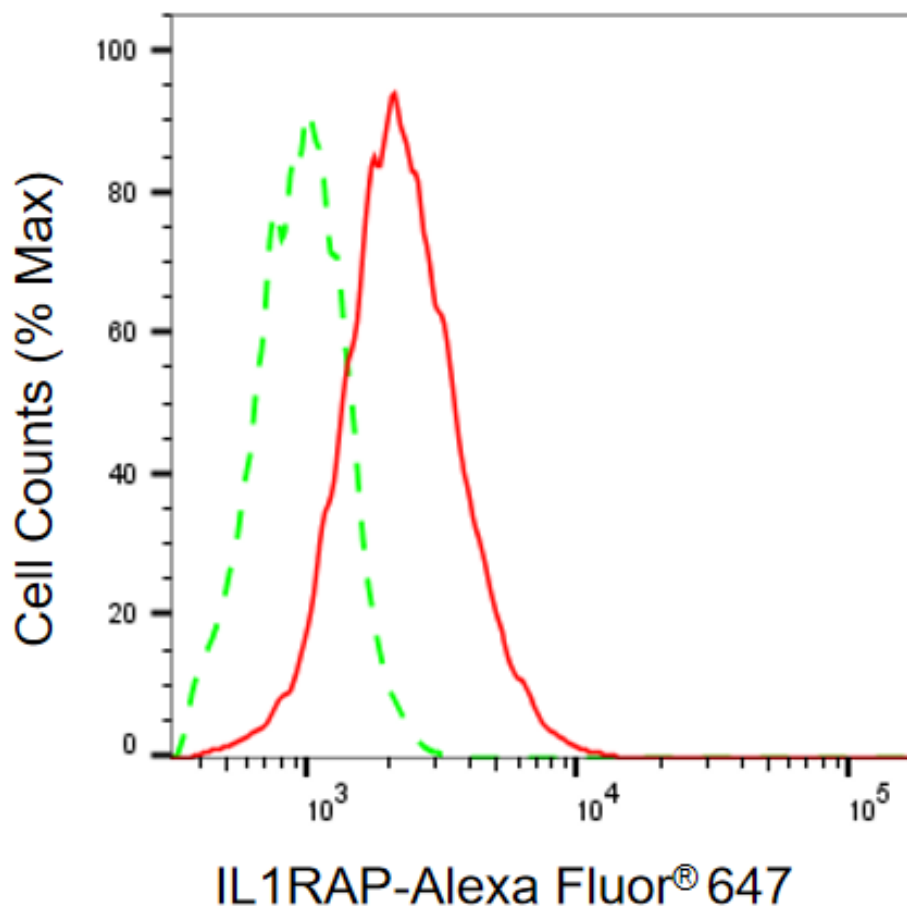
SUPPORT

SUPPORT@GENUINBIOTECH.COM
TEL: +1-540-855-7041

ORDERS

SALES@GENUINBIOTECH.COM
FAX: +1-540-855-7041

WWW.GENUINBIOTECH.COM



Copyright ©2025 Genuin Biotechnologies LLC

Flow cytometric analysis of IL1RAP expression in HepG2 cells using anti-IL1RAP antibody (Cat#4924, 1:2,000). Green, isotype control; red, IL1RAP.

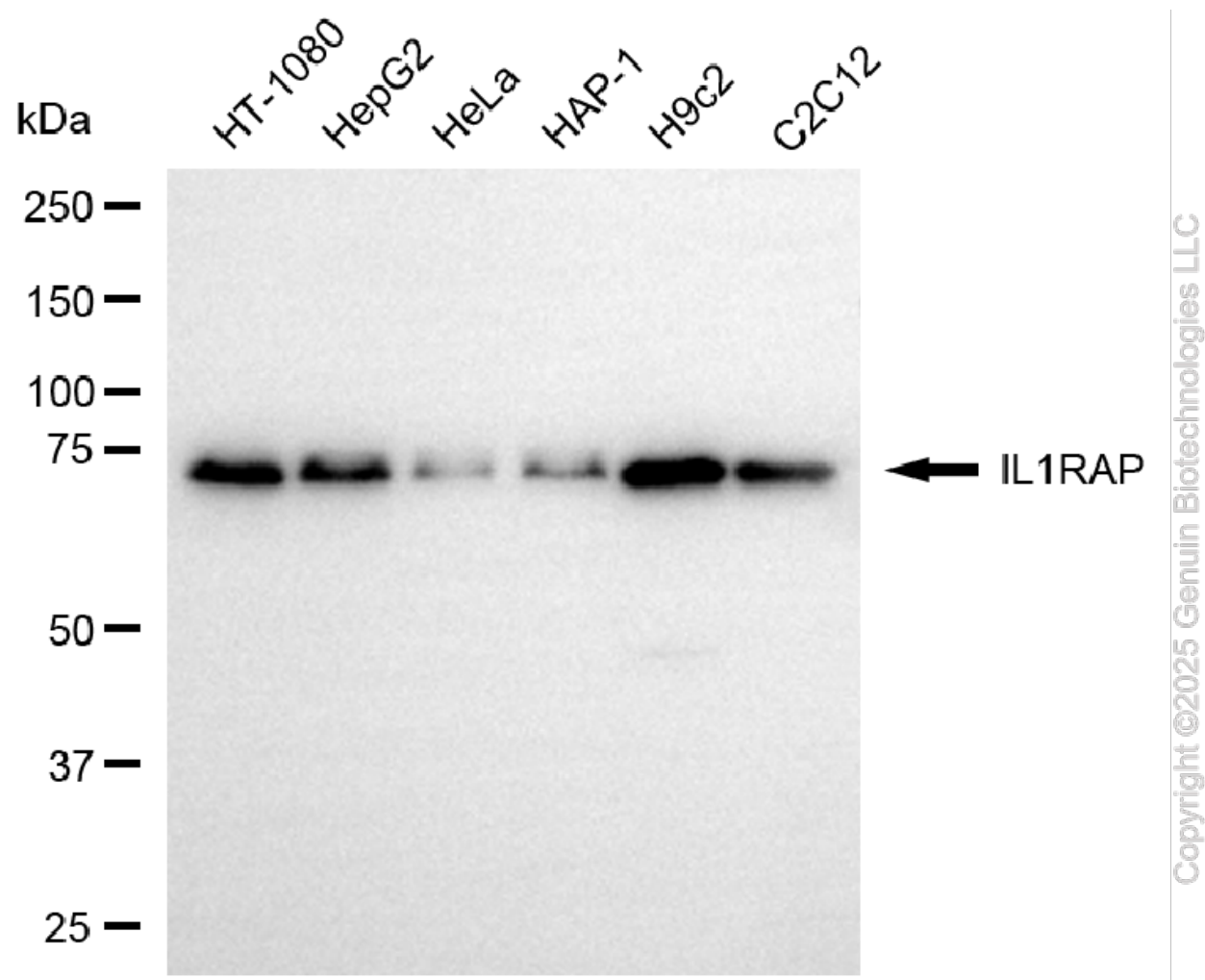
SUPPORT

SUPPORT@GENUINBIOTECH.COM
TEL: +1-540-855-7041

ORDERS

SALES@GENUINBIOTECH.COM
FAX: +1-540-855-7041

WWW.GENUINBIOTECH.COM



Western blotting analysis using anti-IL1RAP antibody (Cat#4924). Total cell lysates (30 µg) from various cell lines were loaded and separated by SDS-PAGE. The blot was incubated with anti-IL1RAP antibody (Cat#4924, 1:2,500) and HRP-conjugated goat anti-rabbit secondary antibody (Cat#201, 1:20,000) respectively. Image was developed using FeQ™ ECL Substrate Kit (Cat#226).

SUPPORT

SUPPORT@GENUINBIOTECH.COM
TEL: +1-540-855-7041

ORDERS

SALES@GENUINBIOTECH.COM
FAX: +1-540-855-7041

WWW.GENUINBIOTECH.COM