

Catalog #: 4927

Aliases

NOP10; NOP10 Ribonucleoprotein; NOP10P; NOLA3; Nucleolar Protein Family A, Member 3 (H/ACA Small Nucleolar RNPs); H/ACA Ribonucleoprotein Complex Subunit 3; Nucleolar Protein Family A Member 3; Homolog Of Yeast Nop10p; Nucleolar Protein 10; SnoRNP Protein NOP10; MGC70651; NOP10 Ribonucleoprotein Homolog (Yeast); NOP10 Ribonucleoprotein Homolog; PFBMFT9; CHINE2; DKCB1

Background

Gene Name: NOP10

NCBI Gene Entry: [55505](#)

UniProt Entry: [Q9NPE3](#)

Application Information

Molecular Weight: Predicted, 8 kDa; observed, 13 kDa

Clonality: Rabbit monoclonal antibody

Clone ID: 24GB13795

Species Reactivity: Human, mouse, rat

Applications Tested: Western blotting (WB), immunocytochemistry (IC), flow cytometry (FCM)

Immunogen

A synthesized peptide derived from human NOP10

Isotype

Rabbit IgG

Storage Buffer

Supplied in PBS (pH 7.4) containing 50% glycerol, and 0.02% sodium azide.

Storage

Store at -20 °C for one year.

Recommended Dilutions

Western Blotting (WB): 1:1,000-1:5,000

Immunohistochemistry (IHC): 1:100-1:1,000

Flow Cytometry (FCM) : 1:2,000

SUPPORT

SUPPORT@GENUINBIOTECH.COM
TEL: +1-540-855-7041

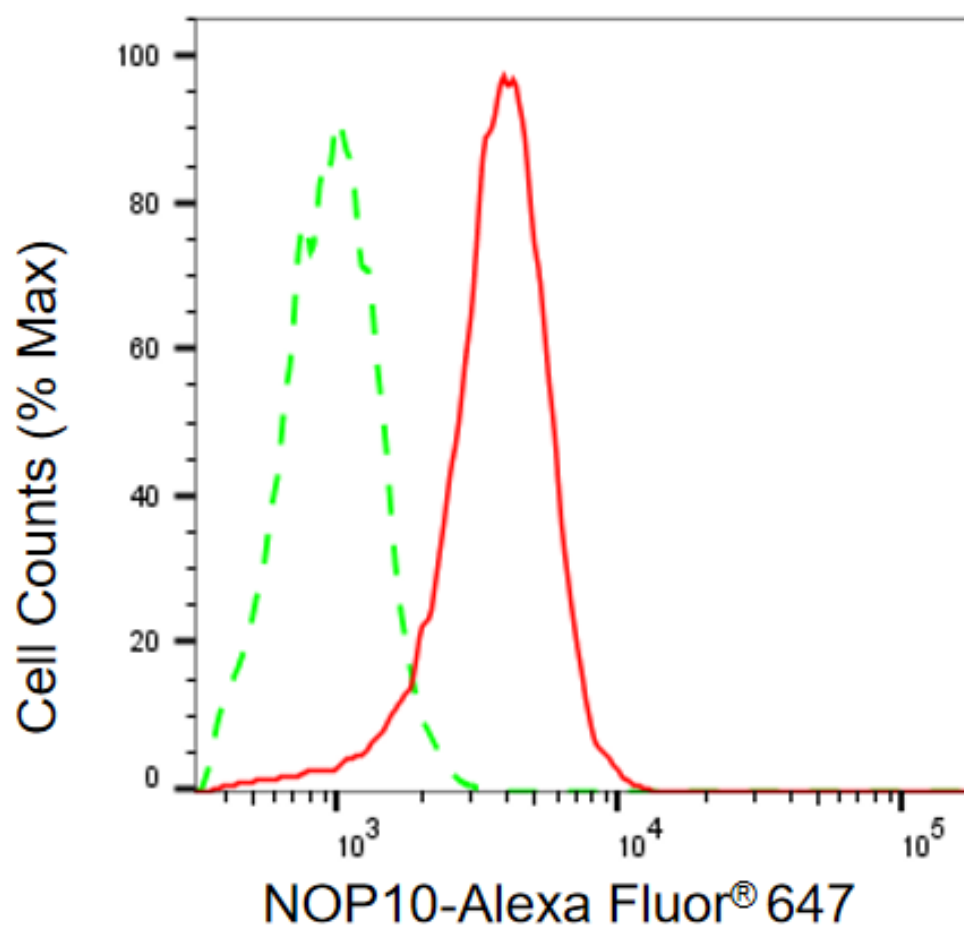
ORDERS

SALES@GENUINBIOTECH.COM
FAX: +1-540-855-7041

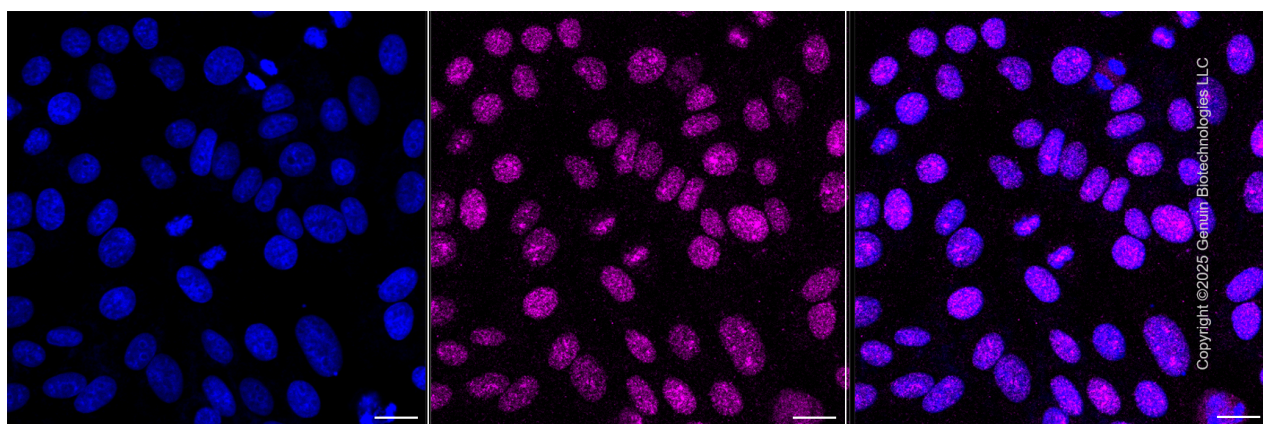
WWW.GENUINBIOTECH.COM

Note: This product is for research use only.

Validation Data



Flow cytometric analysis of NOP10 expression in HepG2 cells using anti-NOP10 antibody (Cat#4927, 1:2,000). Green, isotype control; red, NOP10.



SUPPORT

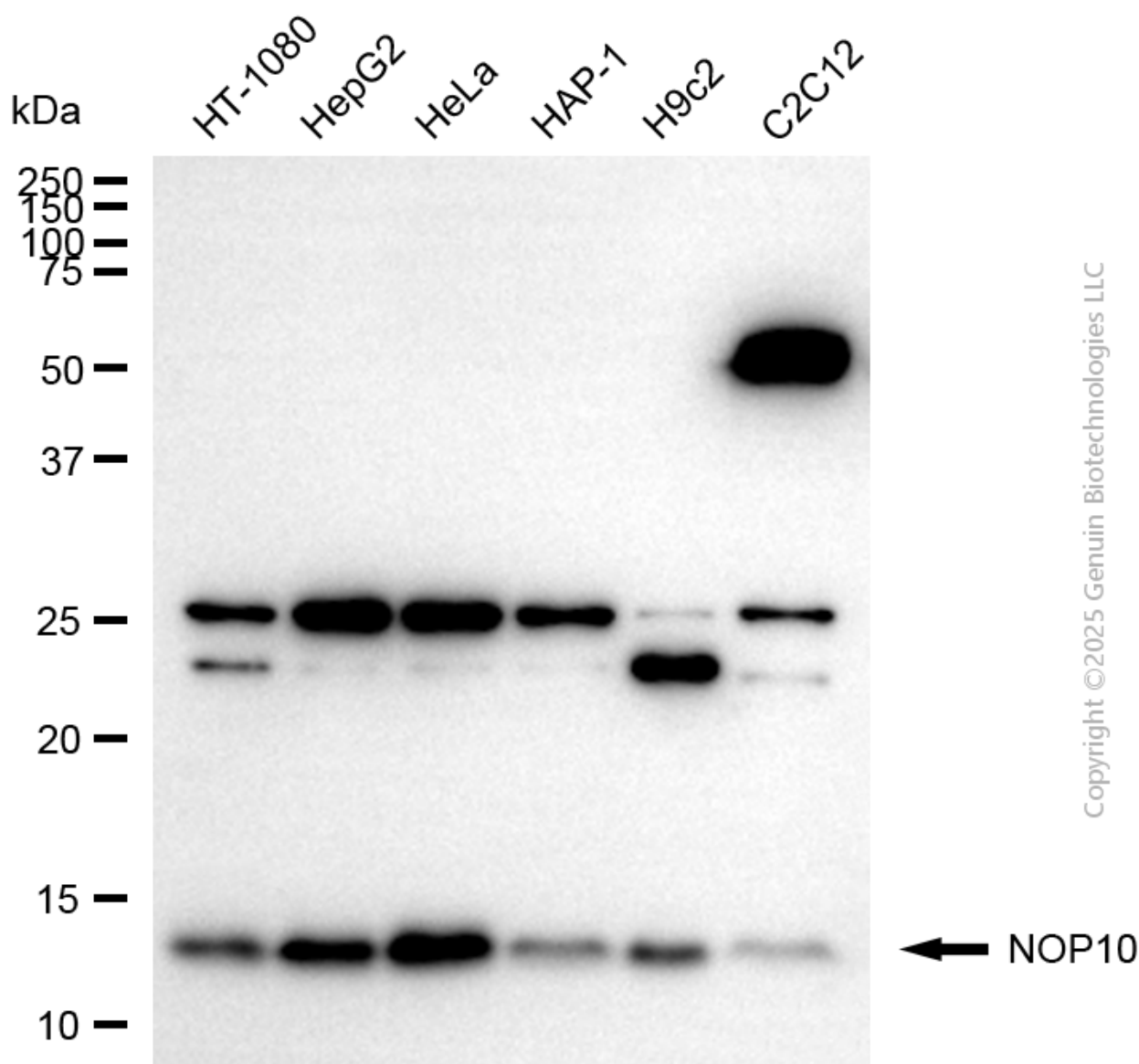
SUPPORT@GENUINBIOTECH.COM
TEL: +1-540-855-7041

ORDERS

SALES@GENUINBIOTECH.COM
FAX: +1-540-855-7041

WWW.GENUINBIOTECH.COM

Immunocytochemical staining of HepG2 cells with anti-NOP10 antibody (Cat#4927, 1:1,000) . Nuclei were stained blue with DAPI; NOP10 was stained magenta with Alexa Fluor® 647. Images were taken using Leica stellaris 5. Protein abundance based on laser Intensity and smart gain: Medium. Scale bar, 20 µm.



Western blotting analysis using anti-NOP10 antibody (Cat#4927). Total cell lysates (30 µg) from various cell lines were loaded and separated by SDS-PAGE. The blot was incubated with anti-NOP10 antibody (Cat#4927, 1:5,000) and HRP-conjugated goat anti-rabbit secondary antibody (Cat#201, 1:20,000) respectively. Image was developed using FeQ™ ECL Substrate Kit (Cat#226).