

## Catalog #: 4932

### Aliases

BNIP3; BCL2 Interacting Protein 3; HABON; Nip3; BCL2/Adenovirus E1B 19 KDa Protein-Interacting Protein 3; Hypoxia-Activated BNIP3 Overlapping Non-Coding RNA; BCL2/Adenovirus E1B 19kDa Interacting Protein 3; Nineteen KD Interacting Protein-3; BCL2/Adenovirus E1B Interacting Protein 3; NIP3

### Background

Gene Name: BNIP3

NCBI Gene Entry: [664](#)

UniProt Entry: [Q12983](#)

### Application Information

Molecular Weight: Predicted, 22 kDa; observed, 21-30 kDa

Clonality: Rabbit monoclonal antibody

Clone ID: 24GB13820

Species Reactivity: Human, mouse, rat

Applications Tested: Western blotting (WB), immunocytochemistry (IC), flow cytometry (FCM)

### Immunogen

A synthesized peptide derived from human BNIP3

### Isotype

Rabbit IgG

### Storage Buffer

Supplied in PBS (pH 7.4) containing 50% glycerol, and 0.02% sodium azide.

### Storage

Store at -20 °C for one year.

### Recommended Dilutions

Western Blotting (WB): 1:1,000-1:5,000

Immunocytochemistry (IC): 1:100-1:1,000

**Note:** This product is for research use only.

---

#### SUPPORT

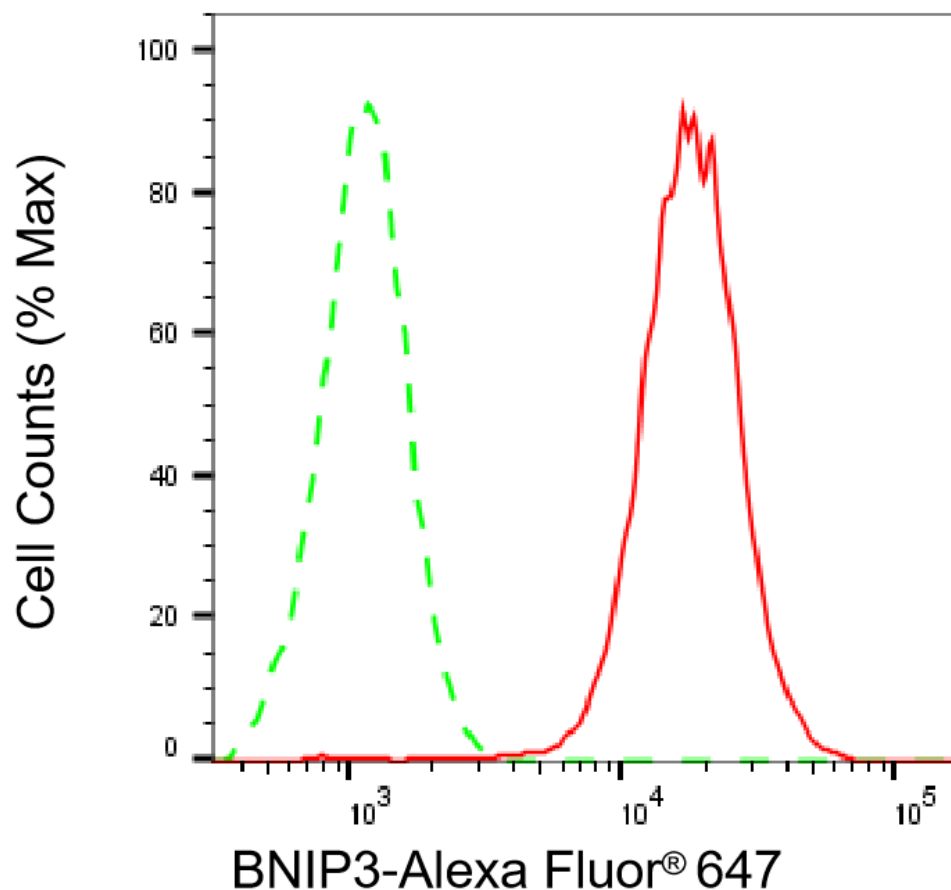
SUPPORT@GENUINBIOTECH.COM  
TEL: +1-540-855-7041

#### ORDERS

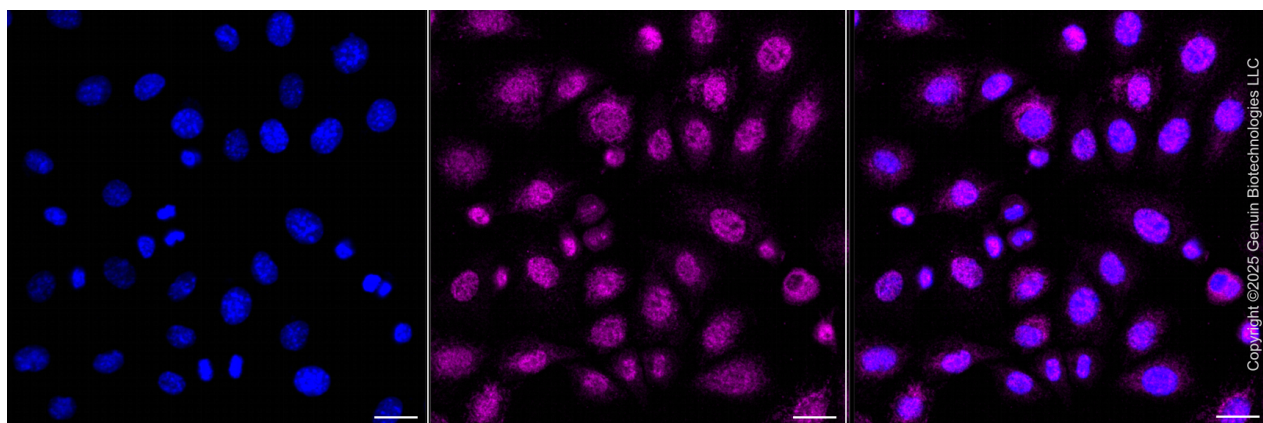
SALES@GENUINBIOTECH.COM  
FAX: +1-540-855-7041

[WWW.GENUINBIOTECH.COM](http://WWW.GENUINBIOTECH.COM)

## Validation Data



Flow cytometric analysis of BNIP3 expression in C2C12 cells using anti-BNIP3 antibody (Cat#4932, 1:1000). Green, isotype control; red, BNIP3.



Immunocytochemical staining of C2C12 cells with anti-BNIP3 antibody (Cat#4932, 1:1,000) . Nuclei were stained blue with DAPI; BNIP3 was stained magenta with Alexa Fluor® 647. Images were taken using Leica stellaris 5. Protein abundance based on laser Intensity and smart gain:

## SUPPORT

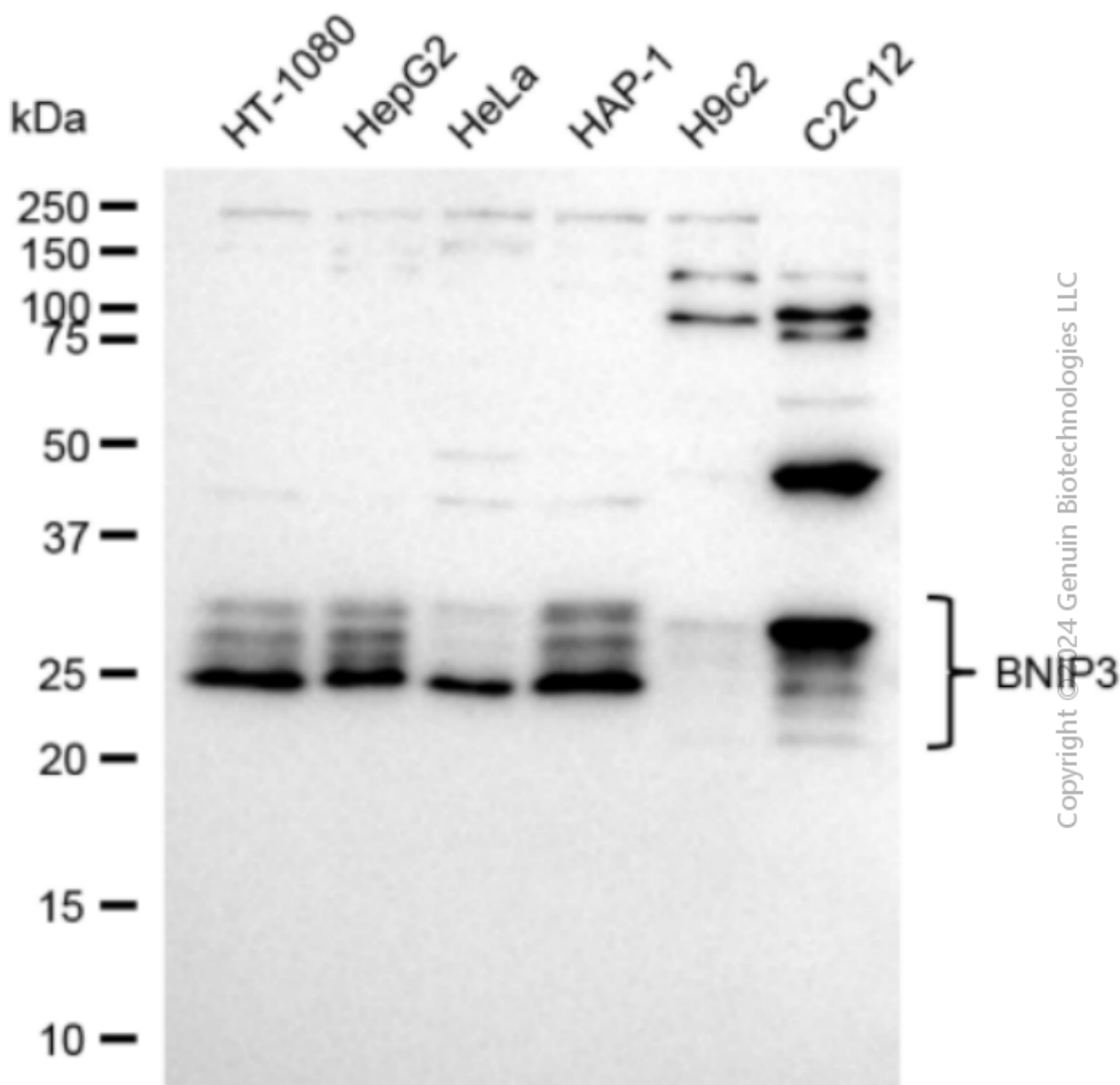
SUPPORT@GENUINBIOTECH.COM  
TEL: +1-540-855-7041

## ORDERS

SALES@GENUINBIOTECH.COM  
FAX: +1-540-855-7041

WWW.GENUINBIOTECH.COM

Medium. Scale bar, 20  $\mu$ m.



Western blotting analysis using anti-BNIP3 antibody (Cat#4932). Total cell lysates (30  $\mu$ g) from various cell lines were loaded and separated by SDS-PAGE. The blot was incubated with anti-BNIP3 antibody (Cat#4932, 1:5,000) and HRP-conjugated goat anti-rabbit secondary antibody (Cat#201, 1:20,000) respectively. Image was developed using FeQ™ ECL Substrate Kit (Cat#226).

## SUPPORT

SUPPORT@GENUINBIOTECH.COM  
TEL: +1-540-855-7041

## ORDERS

SALES@GENUINBIOTECH.COM  
FAX: +1-540-855-7041

[WWW.GENUINBIOTECH.COM](http://WWW.GENUINBIOTECH.COM)