

Anti-Cleaved Caspase 2 Rabbit Polyclonal Antibody



Catalog #: 4940

Aliases

CASP2; Caspase 2; ICH1; PPP1R57; NEDD2; Neural Precursor Cell Expressed Developmentally Down-Regulated Protein 2; Protein Phosphatase 1, Regulatory Subunit 57; Protease ICH-1; EC 3.4.22.55; Caspase-2; MGC2181; CASP-2; NEDD-2; Neural Precursor Cell Expressed, Developmentally Down-Regulated 2; Caspase 2, Apoptosis-Related Cysteine Peptidase; Caspase 2 Apoptosis-Related Cysteine Peptidase; MRT80

Background

Gene Name: CASP2

NCBI Gene Entry: [835](#)

UniProt Entry: [P42575](#)

Application Information

Molecular Weight: Predicted, 51 kDa; observed, 33 kDa

Clonality: Rabbit polyclonal antibody

Species Reactivity: Human, mouse, rat

Applications Tested: Western blotting (WB)

Immunogen

A synthesized peptide derived from human Cleaved Caspase 2

Isotype

Rabbit IgG

Storage Buffer

Supplied in PBS (pH 7.4) containing 50% glycerol, and 0.02% sodium azide.

Storage

Store at -20 °C for one year.

Recommended Dilutions

Western Blotting (WB): 1:500-1:2,500

Note: This product is for research use only.

Validation Data

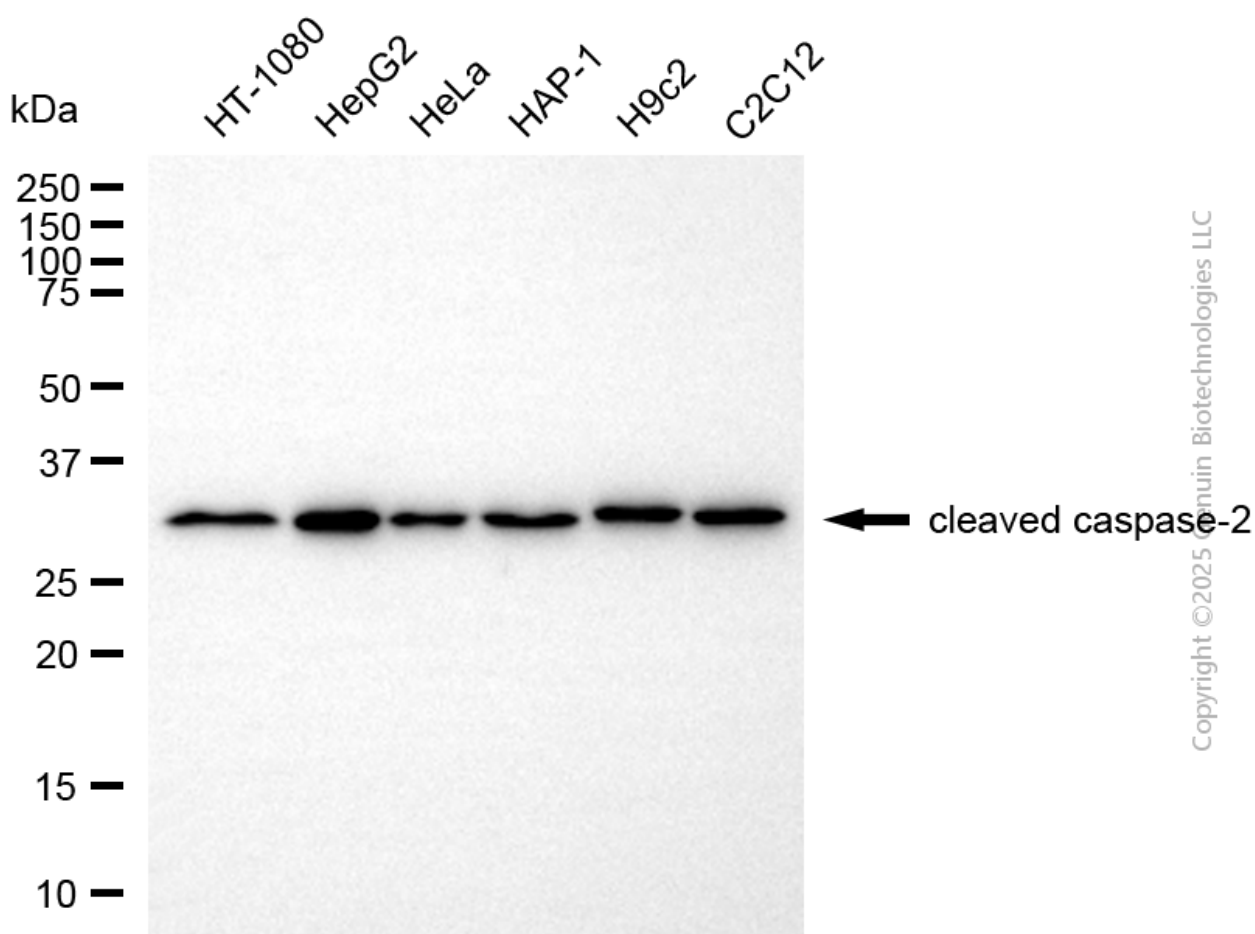
SUPPORT

SUPPORT@GENUINBIOTECH.COM
TEL: +1-540-855-7041

ORDERS

SALES@GENUINBIOTECH.COM
FAX: +1-540-855-7041

WWW.GENUINBIOTECH.COM



Western blotting analysis using anti-cleaved caspase-2 antibody (Cat#4940). Total cell lysates (30 μ g) from various cell lines were loaded and separated by SDS-PAGE. The blot was incubated with anti-cleaved caspase-2 antibody (Cat#4940, 1:2,500) and HRP-conjugated goat anti-rabbit secondary antibody (Cat#201, 1:20,000) respectively. Image was developed using FeQ™ ECL Substrate Kit (Cat#226).