

## Catalog #: 4944

### Aliases

CSE1L; Chromosome Segregation 1 Like; XPO2; CAS; CSE1; Cellular Apoptosis Susceptibility Protein; Chromosome Segregation 1-Like Protein; Importin-Alpha Re-Exporter; Exportin-2; Exp2; Chromosome Segregation 1 (Yeast Homolog)-Like; CSE1 Chromosome Segregation 1-Like (Yeast); Epididymis Secretory Sperm Binding Protein; CSE1 Chromosome Segregation 1 Like; CSE1 Chromosome Segregation 1-Like; Cellular Apoptosis Susceptibility

### Background

Gene Name: CSE1L

NCBI Gene Entry: [1434](#)

UniProt Entry: [P55060](#)

### Application Information

Molecular Weight: Predicted, 110 kDa; observed, 100 kDa

Clonality: Rabbit polyclonal antibody

Species Reactivity: Human, mouse, rat

Applications Tested: Western blotting (WB)

### Immunogen

A synthesized peptide derived from human XPO2

### Isotype

Rabbit IgG

### Storage Buffer

Supplied in PBS (pH 7.4) containing 50% glycerol, and 0.02% sodium azide.

### Storage

Store at -20 °C for one year.

### Recommended Dilutions

Western Blotting (WB): 1:500-1:2,500

**Note:** This product is for research use only.

### Validation Data

---

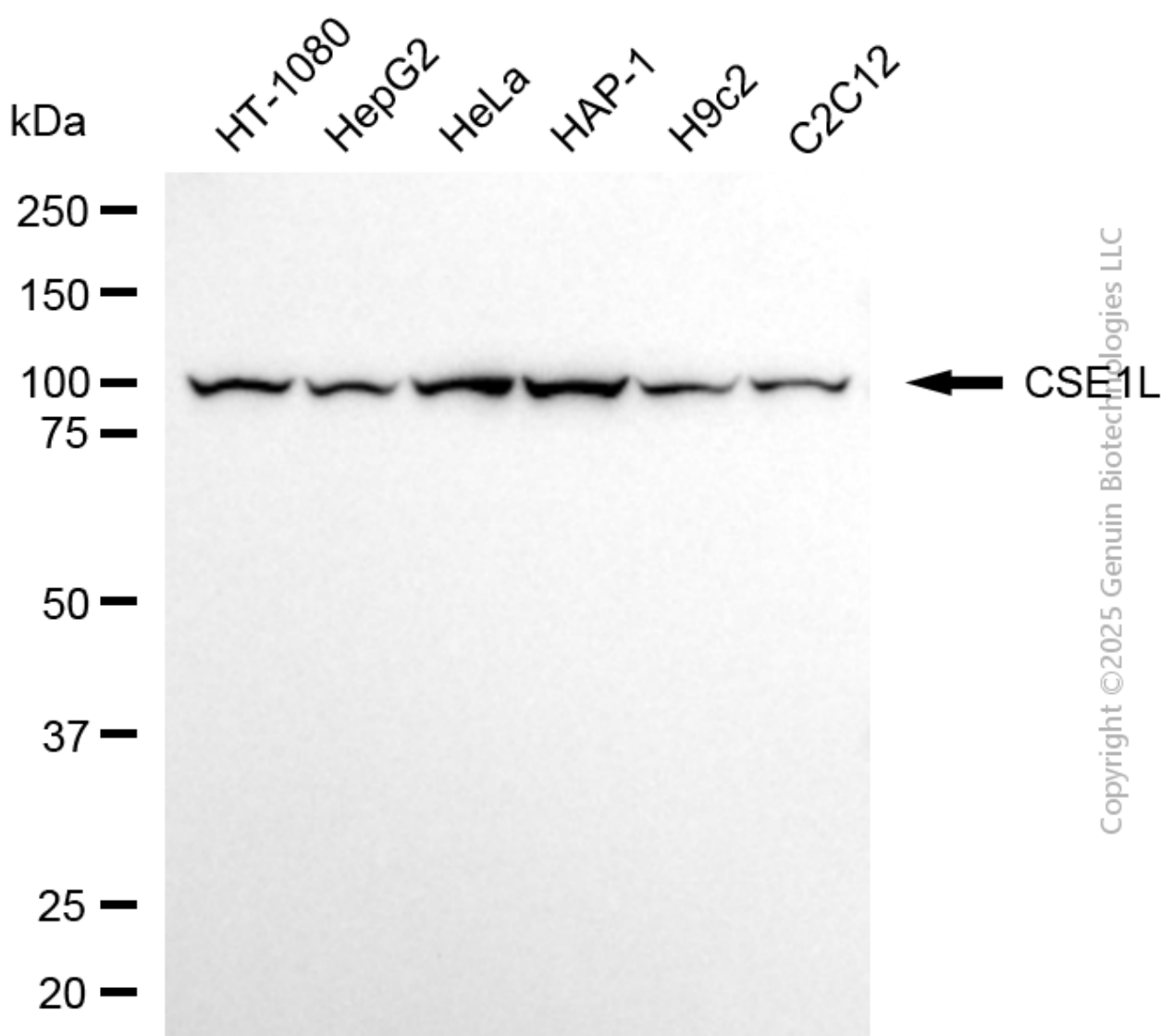
#### SUPPORT

SUPPORT@GENUINBIOTECH.COM  
TEL: +1-540-855-7041

#### ORDERS

SALES@GENUINBIOTECH.COM  
FAX: +1-540-855-7041

[WWW.GENUINBIOTECH.COM](http://WWW.GENUINBIOTECH.COM)



Copyright ©2025 Genuin Biotechnologies LLC

Western blotting analysis using anti-CSE1L antibody (Cat#4944). Total cell lysates (30 µg) from various cell lines were loaded and separated by SDS-PAGE. The blot was incubated with anti-CSE1L antibody (Cat#4944, 1:2,500) and HRP-conjugated goat anti-rabbit secondary antibody (Cat#201, 1:20,000) respectively. Image was developed using NaQ™ ECL Substrate Kit (Cat#716).

**SUPPORT**

SUPPORT@GENUINBIOTECH.COM  
TEL: +1-540-855-7041

**ORDERS**

SALES@GENUINBIOTECH.COM  
FAX: +1-540-855-7041

**WWW.GENUINBIOTECH.COM**