

Catalog #: 4965

Aliases

MYD88; MYD88 Innate Immune Signal Transduction Adaptor; Myeloid Differentiation Primary Response Protein MyD88; Myeloid Differentiation Primary Response Gene (88); Myeloid Differentiation Primary Response 88; TLR Adaptor MYD88; Mutant Myeloid Differentiation Primary Response 88; MYD88D; IMD68; WM1

Background

Gene Name: MYD88

NCBI Gene Entry: [4615](#)

UniProt Entry: [Q99836](#)

Application Information

Molecular Weight: Predicted, 33 kDa; observed, 28 kDa

Clonality: Rabbit polyclonal antibody

Species Reactivity: Human, mouse, rat

Applications Tested: Western blotting (WB)

Immunogen

A synthesized peptide derived from human MYD88

Isotype

Rabbit IgG

Storage Buffer

Supplied in PBS (pH 7.4) containing 50% glycerol, and 0.02% sodium azide.

Storage

Store at -20 °C for one year.

Recommended Dilutions

Western Blotting (WB): 1:500-1:2,500

Note: This product is for research use only.

Validation Data

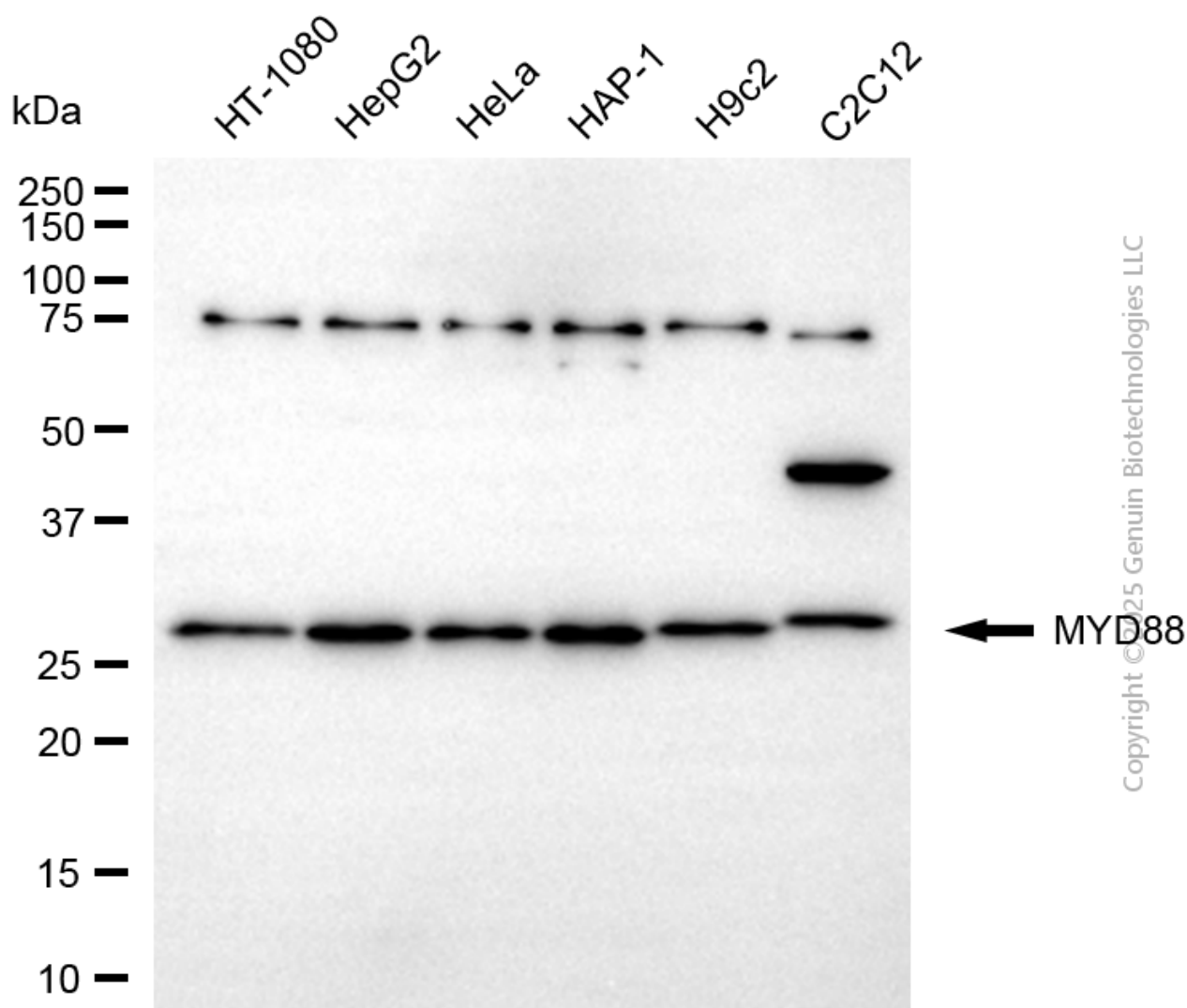
SUPPORT

SUPPORT@GENUINBIOTECH.COM
TEL: +1-540-855-7041

ORDERS

SALES@GENUINBIOTECH.COM
FAX: +1-540-855-7041

WWW.GENUINBIOTECH.COM



Western blotting analysis using anti-MYD88 antibody (Cat#4965). Total cell lysates (30 µg) from various cell lines were loaded and separated by SDS-PAGE. The blot was incubated with anti-MYD88 antibody (Cat#4965, 1:2,500) and HRP-conjugated goat anti-rabbit secondary antibody (Cat#201, 1:20,000) respectively. Image was developed using FeQ™ ECL Substrate Kit (Cat#226).

SUPPORT

SUPPORT@GENUINBIOTECH.COM
TEL: +1-540-855-7041

ORDERS

SALES@GENUINBIOTECH.COM
FAX: +1-540-855-7041

WWW.GENUINBIOTECH.COM