

Catalog #: 4975

Aliases

SLC25A12; Solute Carrier Family 25 Member 12; Aralar; AGC1; Electrogenic Aspartate/Glutamate Antiporter SLC25A12, Mitochondrial; Aralar1; Solute Carrier Family 25 (Mitochondrial Carrier, Aralar), Member 12; Solute Carrier Family 25 (Aspartate/Glutamate Carrier), Member 12; Mitochondrial Aspartate Glutamate Carrier 1; Aspartate/Glutamate Carrier 1; Araceli Hiperlarga; Calcium Binding Mitochondrial Carrier Superfamily Member Aralar1; Calcium-Binding Mitochondrial Carrier Protein Aralar1; ARALAR1; EIEE39; DEE39

Background

Gene Name: SLC25A12

NCBI Gene Entry: [8604](#)

UniProt Entry: [O75746](#)

Application Information

Molecular Weight: Predicted, 75 kDa; observed, 65 kDa

Clonality: Rabbit polyclonal antibody

Species Reactivity: Human, rat

Applications Tested: Western blotting (WB)

Immunogen

A synthesized peptide derived from human ARALAR1

Isotype

Rabbit IgG

Storage Buffer

Supplied in PBS (pH 7.4) containing 50% glycerol, and 0.02% sodium azide.

Storage

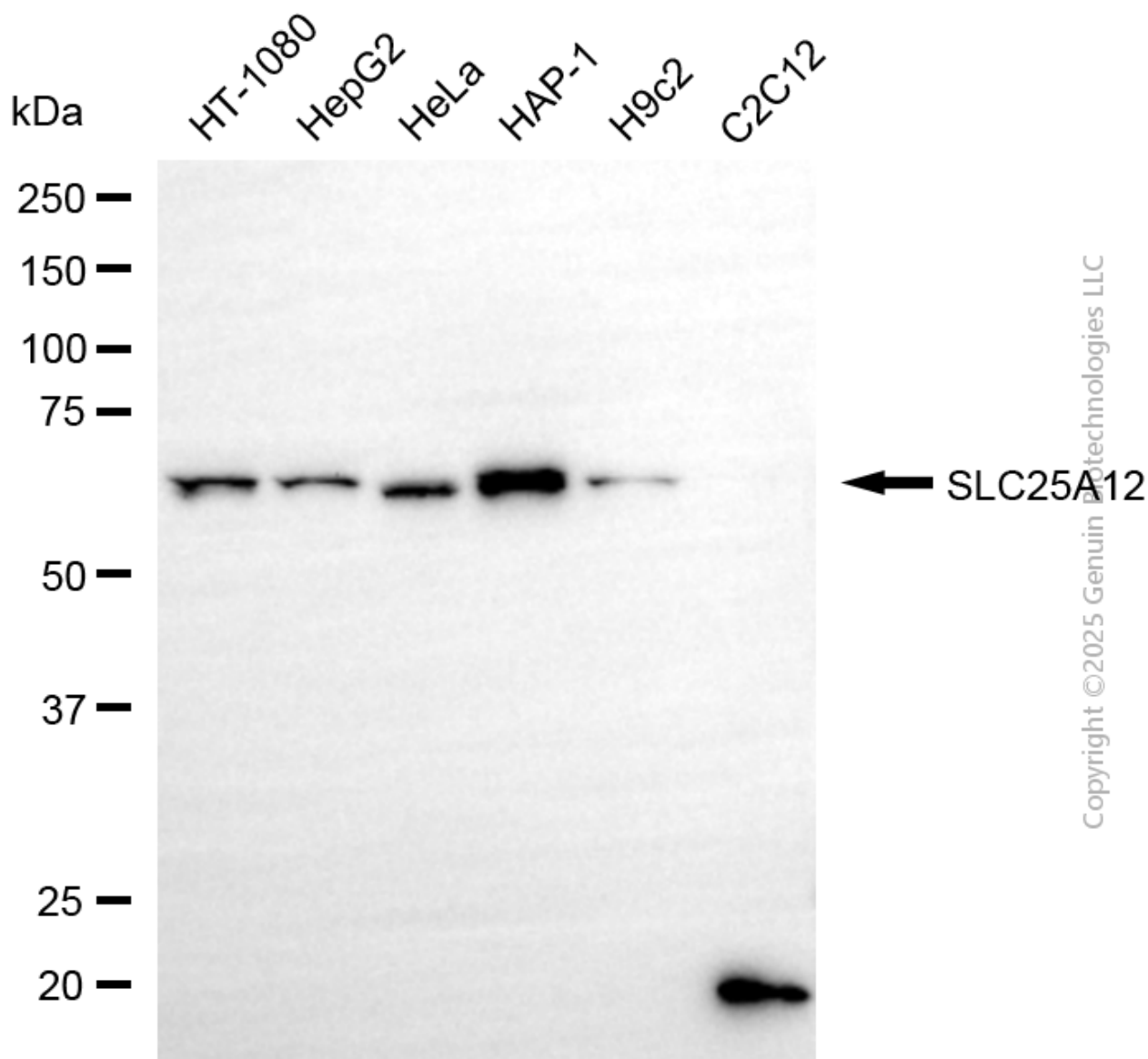
Store at -20 °C for one year.

Recommended Dilutions

Western Blotting (WB): 1:500-1:2,500

Note: This product is for research use only.

Validation Data



Western blotting analysis using anti-SLC25A12 antibody (Cat#4975). Total cell lysates (30 µg) from various cell lines were loaded and separated by SDS-PAGE. The blot was incubated with anti-SLC25A12 antibody (Cat#4975, 1:2,500) and HRP-conjugated goat anti-rabbit secondary antibody (Cat#201, 1:20,000) respectively. Image was developed using NaQ™ ECL Substrate Kit (Cat#716).

SUPPORT

SUPPORT@GENUINBIOTECH.COM
TEL: +1-540-855-7041

ORDERS

SALES@GENUINBIOTECH.COM
FAX: +1-540-855-7041

WWW.GENUINBIOTECH.COM