

Catalog #: 4977

Aliases

EXOG; Exo/Endonuclease G; ENG; Endonuclease G-Like 1; ENDOGL1; ENDOGL2; ENGL-A; ENGL-B; Endo/Exonuclease (5'-3'), Endonuclease G-Like; Nuclease EXOG, Mitochondrial; Endonuclease G-Like 2; Endo G-Like 1; EC 3.1.30.-; EC 3.1.30; ENGLA; ENGLB

Background

Gene Name: EXOG

NCBI Gene Entry: [9941](#)

UniProt Entry: [Q9Y2C4](#)

Application Information

Molecular Weight: Predicted, 41 kDa; observed, 46 kDa

Clonality: Rabbit polyclonal antibody

Species Reactivity: Human, mouse

Applications Tested: Western blotting (WB)

Immunogen

A synthesized peptide derived from human ENDOGL1

Isotype

Rabbit IgG

Storage Buffer

Supplied in PBS (pH 7.4) containing 50% glycerol, and 0.02% sodium azide.

Storage

Store at -20 °C for one year.

Recommended Dilutions

Western Blotting (WB): 1:500-1:2,500

Note: This product is for research use only.

Validation Data

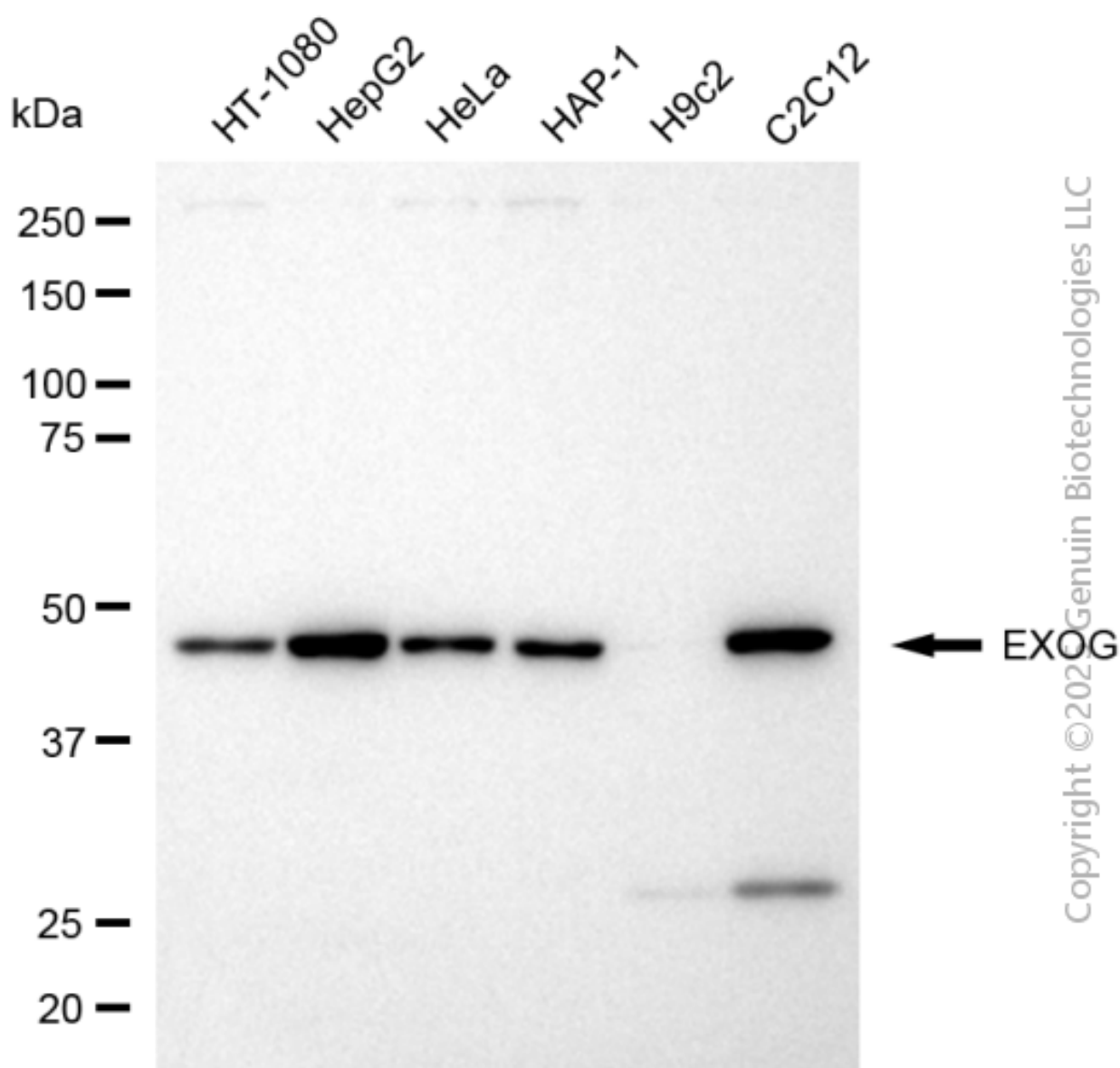
SUPPORT

SUPPORT@GENUINBIOTECH.COM
TEL: +1-540-855-7041

ORDERS

SALES@GENUINBIOTECH.COM
FAX: +1-540-855-7041

WWW.GENUINBIOTECH.COM



Western blotting analysis using anti-EXOG antibody (Cat#4977). Total cell lysates (30 μ g) from various cell lines were loaded and separated by SDS-PAGE. The blot was incubated with anti-EXOG antibody (Cat#4977, 1:2,500) and HRP-conjugated goat anti-rabbit secondary antibody (Cat#201, 1:20,000) respectively. Image was developed using FeQ™ ECL Substrate Kit (Cat#226).