

## Catalog #: 4978

## Aliases

HDAC6; Histone Deacetylase 6; HD6; KIAA0901; PPP1R90; KDAC6; JM21; Protein Phosphatase 1, Regulatory Subunit 90; Tubulin-Lysine Deacetylase HDAC6; Alpha-Tubulin Deacetylase HDAC6; Protein Deacetylase HDAC6; EC 3.5.1.98; FLJ16239; EC 3.5.1.-; CPBHM

## Background

Gene Name: HDAC6

NCBI Gene Entry: [10013](#)

UniProt Entry: [Q9UBN7](#)

## Application Information

Molecular Weight: Predicted, 131 kDa; observed, 150 kDa

Clonality: Rabbit polyclonal antibody

Species Reactivity: Human, mouse, rat

Applications Tested: Western blotting (WB)

## Immunogen

A synthesized peptide derived from human Histone Deacetylase 6

## Isotype

Rabbit IgG

## Storage Buffer

Supplied in PBS (pH 7.4) containing 50% glycerol, and 0.02% sodium azide.

## Storage

Store at -20 °C for one year.

## Recommended Dilutions

Western Blotting (WB): 1:500-1:2,500

**Note:** This product is for research use only.

## Validation Data

---

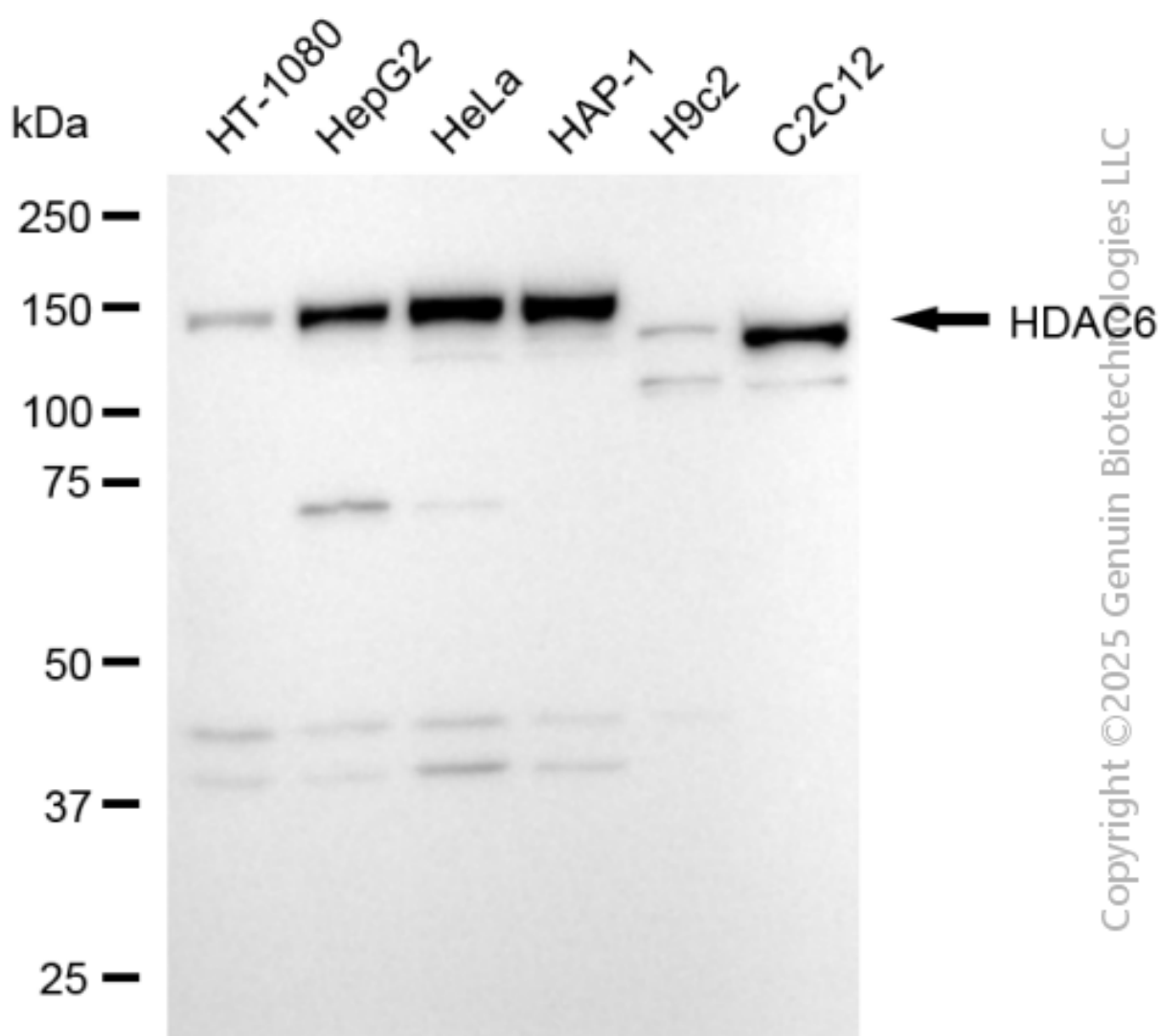
### SUPPORT

SUPPORT@GENUINBIOTECH.COM  
TEL: +1-540-855-7041

### ORDERS

SALES@GENUINBIOTECH.COM  
FAX: +1-540-855-7041

[WWW.GENUINBIOTECH.COM](http://WWW.GENUINBIOTECH.COM)



Western blotting analysis using anti-HDAC6 antibody (Cat#4978). Total cell lysates (30  $\mu$ g) from various cell lines were loaded and separated by SDS-PAGE. The blot was incubated with anti-HDAC6 antibody (Cat#4978, 1:2,500) and HRP-conjugated goat anti-rabbit secondary antibody (Cat#201, 1:20,000) respectively. Image was developed using NaQ™ ECL Substrate Kit (Cat#716).