

**Catalog #: 4980**

## Aliases

HSPH1; Heat Shock Protein Family H (Hsp110) Member 1; KIAA0201; NY-CO-25; HSP105B; HSP105A; Heat Shock Protein Family H Member 1; Heat Shock 105kDa/110kDa Protein 1; Heat Shock Protein 105 KDa; Antigen NY-CO-25; HSP105; Heat Shock 110 KDa Protein; HSP110

## Background

Gene Name: HSPH1

NCBI Gene Entry: [10808](#)

UniProt Entry: [Q92598](#)

## Application Information

Molecular Weight: Predicted, 97 kDa; observed, 105 kDa

Clonality: Rabbit polyclonal antibody

Species Reactivity: Human, mouse, rat

Applications Tested: Western blotting (WB)

## Immunogen

A synthesized peptide derived from human HSPH1

## Isotype

Rabbit IgG

## Storage Buffer

Supplied in PBS (pH 7.4) containing 50% glycerol, and 0.02% sodium azide.

## Storage

Store at -20 °C for one year.

## Recommended Dilutions

Western Blotting (WB): 1:1,000-1:5,000

**Note:** This product is for research use only.

## Validation Data

---

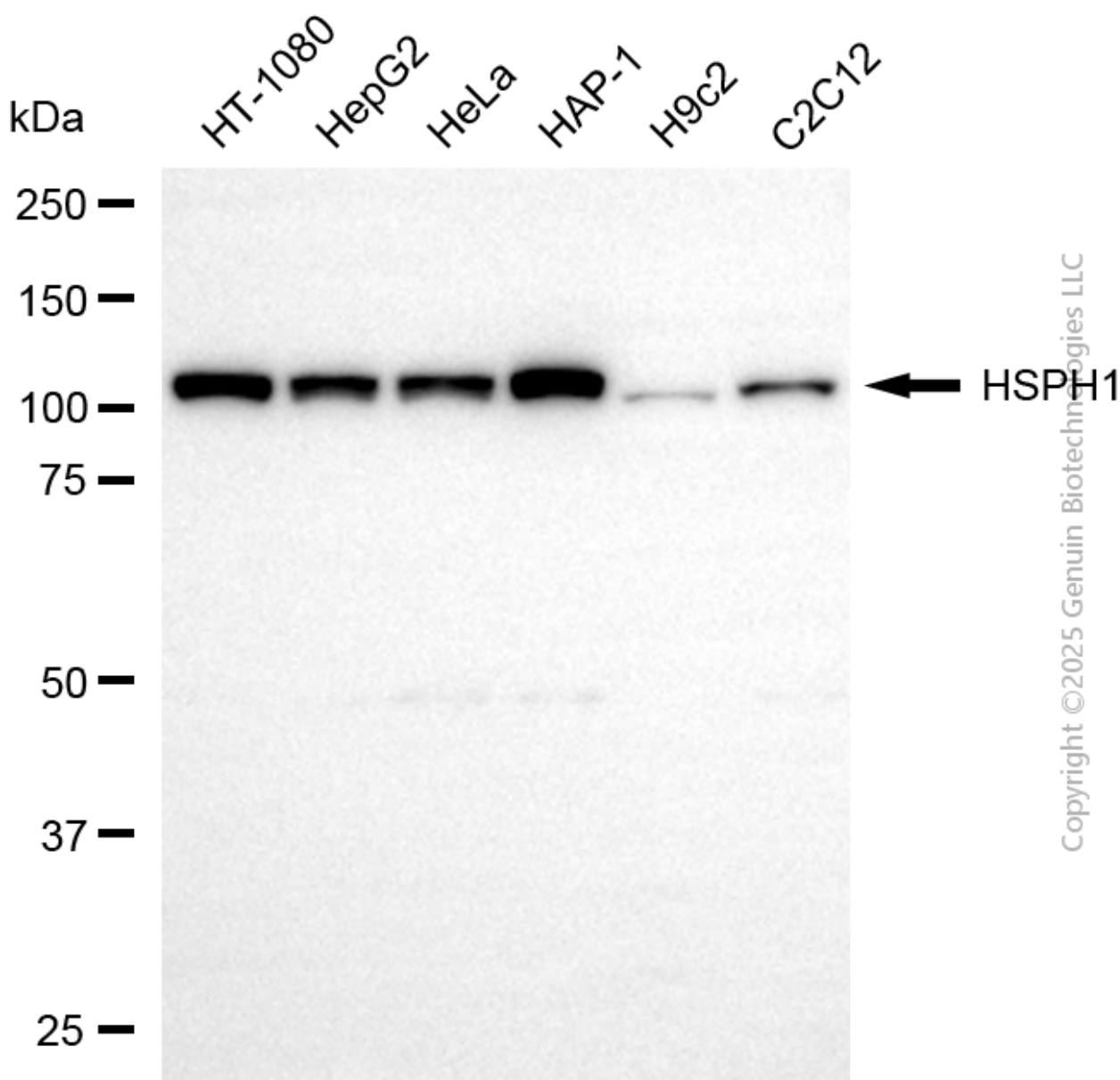
### SUPPORT

SUPPORT@GENUINBIOTECH.COM  
TEL: +1-540-855-7041

### ORDERS

SALES@GENUINBIOTECH.COM  
FAX: +1-540-855-7041

[WWW.GENUINBIOTECH.COM](http://WWW.GENUINBIOTECH.COM)



Western blotting analysis using anti-HSPH1 antibody (Cat#4980). Total cell lysates (20 µg) from various cell lines were loaded and separated by SDS-PAGE. The blot was incubated with anti-HSPH1 antibody (Cat#4980, 1:5,000) and HRP-conjugated goat anti-rabbit secondary antibody (Cat#201, 1:20,000) respectively. Image was developed using NaQ™ ECL Substrate Kit (Cat#716).

**SUPPORT**

SUPPORT@GENUINBIOTECH.COM  
TEL: +1-540-855-7041

**ORDERS**

SALES@GENUINBIOTECH.COM  
FAX: +1-540-855-7041

[WWW.GENUINBIOTECH.COM](http://WWW.GENUINBIOTECH.COM)