

Catalog #: 4985

Aliases

LRP8; LDL Receptor Related Protein 8; APOER2; LRP-8; HSZ75190; MCI1; Low Density Lipoprotein Receptor-Related Protein 8, Apolipoprotein E Receptor; Low-Density Lipoprotein Receptor-Related Protein 8; Apolipoprotein E Receptor 2; ApoE Receptor 2

Background

Gene Name: LRP8

NCBI Gene Entry: [7804](#)

UniProt Entry: [Q14114](#)

Application Information

Molecular Weight: Predicted, 106 kDa; observed, 95 kDa

Clonality: Rabbit polyclonal antibody

Species Reactivity: Human, mouse, rat

Applications Tested: Western blotting (WB)

Immunogen

A synthesized peptide derived from human Apolipoprotein E Receptor 2

Isotype

Rabbit IgG

Storage Buffer

Supplied in PBS (pH 7.4) containing 50% glycerol, and 0.02% sodium azide.

Storage

Store at -20 °C for one year.

Recommended Dilutions

Western Blotting (WB): 1:200-1:1,000

Note: This product is for research use only.

Validation Data

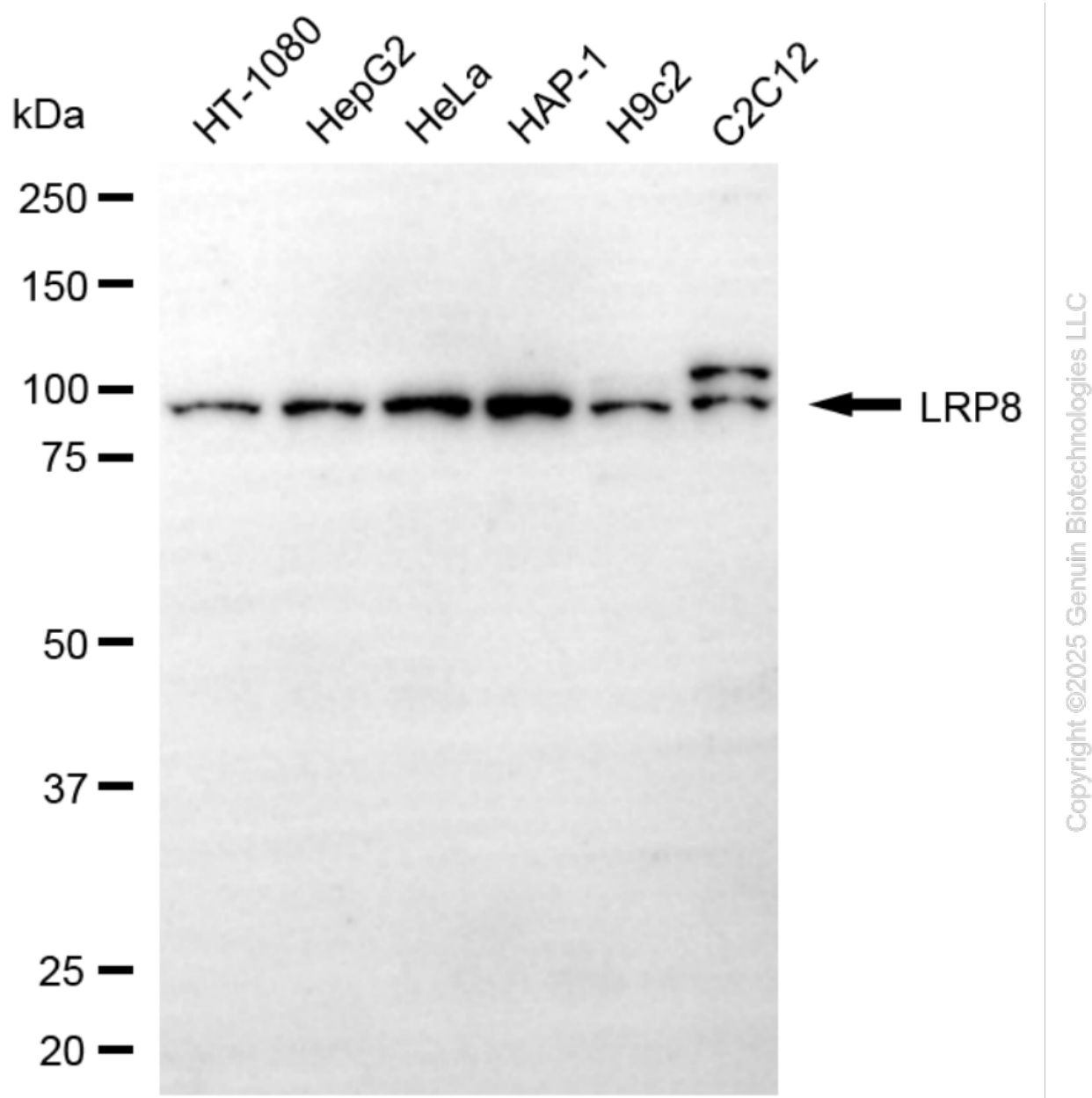
SUPPORT

SUPPORT@GENUINBIOTECH.COM
TEL: +1-540-855-7041

ORDERS

SALES@GENUINBIOTECH.COM
FAX: +1-540-855-7041

WWW.GENUINBIOTECH.COM



Western blotting analysis using anti-LRP8 antibody (Cat#4985). Total cell lysates (30 μ g) from various cell lines were loaded and separated by SDS-PAGE. The blot was incubated with anti-LRP8 antibody (Cat#4985, 1:1,000) and HRP-conjugated goat anti-rabbit secondary antibody (Cat#201, 1:20,000) respectively. Image was developed using NaQ™ ECL Substrate Kit (Cat#716).

SUPPORT

SUPPORT@GENUINBIOTECH.COM
TEL: +1-540-855-7041

ORDERS

SALES@GENUINBIOTECH.COM
FAX: +1-540-855-7041

WWW.GENUINBIOTECH.COM