

Catalog #: 4996

Aliases

CSF1; Colony Stimulating Factor 1; MCSF; M-CSF; Proteoglycan Macrophage Colony-Stimulating Factor; Colony Stimulating Factor 1 (Macrophage); Macrophage Colony Stimulating Factor 1; Macrophage Colony-Stimulating Factor 1; Lanimostim; MGC31930; PG-M-CSF; CSF-1; CSF1-HERV-LTR71B Fusion Protein

Background

Gene Name: CSF1

NCBI Gene Entry: [1435](#)

UniProt Entry: [P09603](#)

Application Information

Molecular Weight: Predicted, 60 kDa; observed, 62 kDa

Clonality: Rabbit polyclonal antibody

Species Reactivity: Human, mouse, rat

Applications Tested: Western blotting (WB)

Immunogen

A synthesized peptide derived from human M-CSF

Isotype

Rabbit IgG

Storage Buffer

Supplied in PBS (pH 7.4) containing 50% glycerol, and 0.02% sodium azide.

Storage

Store at -20 °C for one year.

Recommended Dilutions

Western Blotting (WB): 1:500-1:2,500

Note: This product is for research use only.

Validation Data

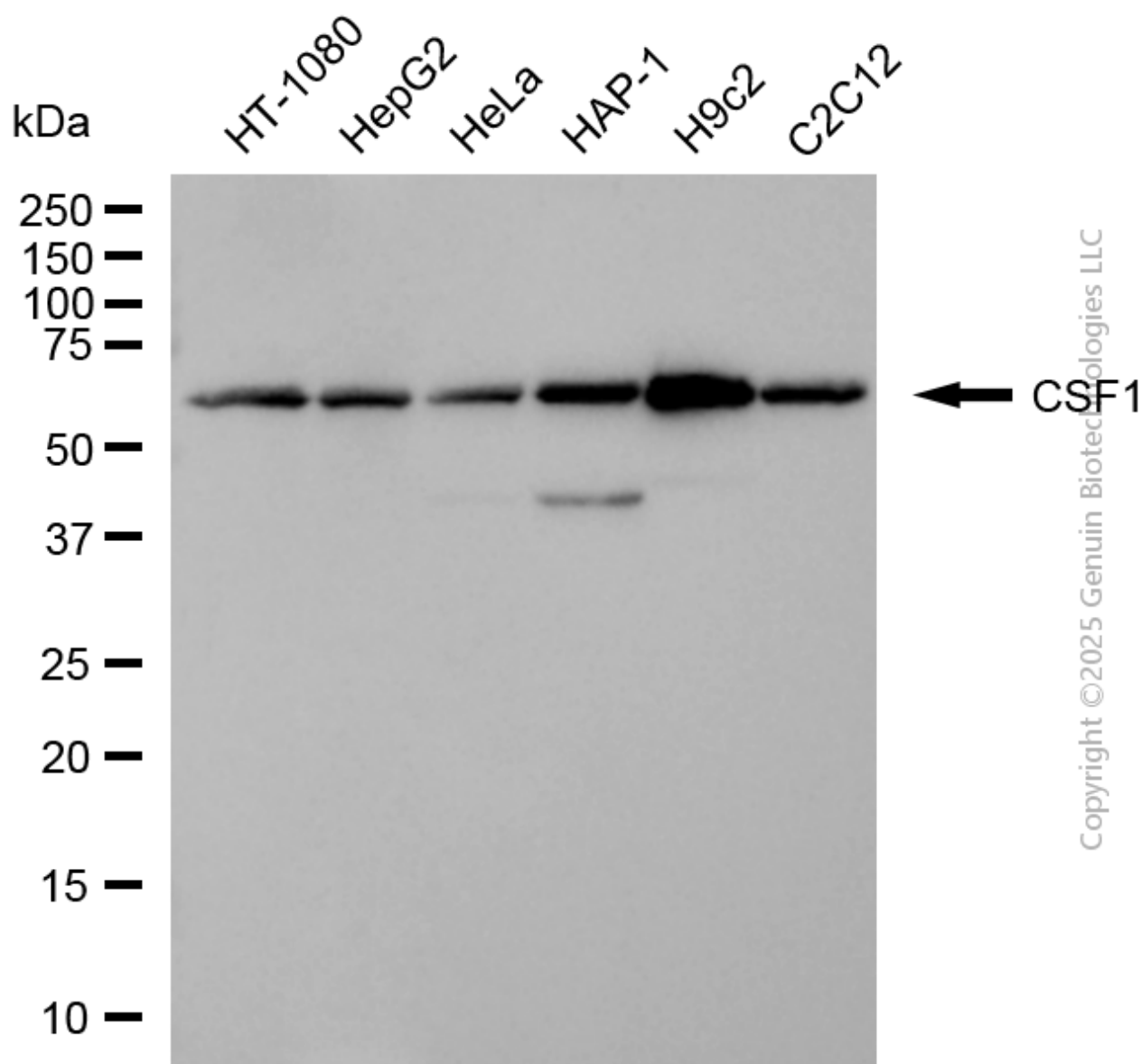
SUPPORT

SUPPORT@GENUINBIOTECH.COM
TEL: +1-540-855-7041

ORDERS

SALES@GENUINBIOTECH.COM
FAX: +1-540-855-7041

WWW.GENUINBIOTECH.COM



Western blotting analysis using anti-CSF1 antibody (Cat#4996). Total cell lysates (30 μ g) from various cell lines were loaded and separated by SDS-PAGE. The blot was incubated with anti-CSF1 antibody (Cat#4996, 1:2,500) and HRP-conjugated goat anti-rabbit secondary antibody (Cat#201, 1:20,000) respectively. Image was developed using NaQ™ ECL Substrate Kit (Cat#716).