

Catalog #: 4997

Aliases

CASP6; Caspase 6; Caspase-6; CSP-6; MCH2; Caspase 6, Apoptosis-Related Cysteine Peptidase; Caspase 6, Apoptosis-Related Cysteine Protease; Mammalian Ced-3 Homologue 2; EC 3.4.22.59; Apoptotic Protease MCH-2; Apoptotic Protease Mch-2; EC 3.4.22; CASP-6

Background

Gene Name: CASP6

NCBI Gene Entry: [839](#)

UniProt Entry: [P55212](#)

Application Information

Molecular Weight: Predicted, 33 kDa; observed, 33 kDa

Clonality: Rabbit polyclonal antibody

Species Reactivity: Human, mouse, rat

Applications Tested: Western blotting (WB)

Immunogen

A synthesized peptide derived from human Caspase 6

Isotype

Rabbit IgG

Storage Buffer

Supplied in PBS (pH 7.4) containing 50% glycerol, and 0.02% sodium azide.

Storage

Store at -20 °C for one year.

Recommended Dilutions

Western Blotting (WB): 1:500-1:2,500

Note: This product is for research use only.

Validation Data

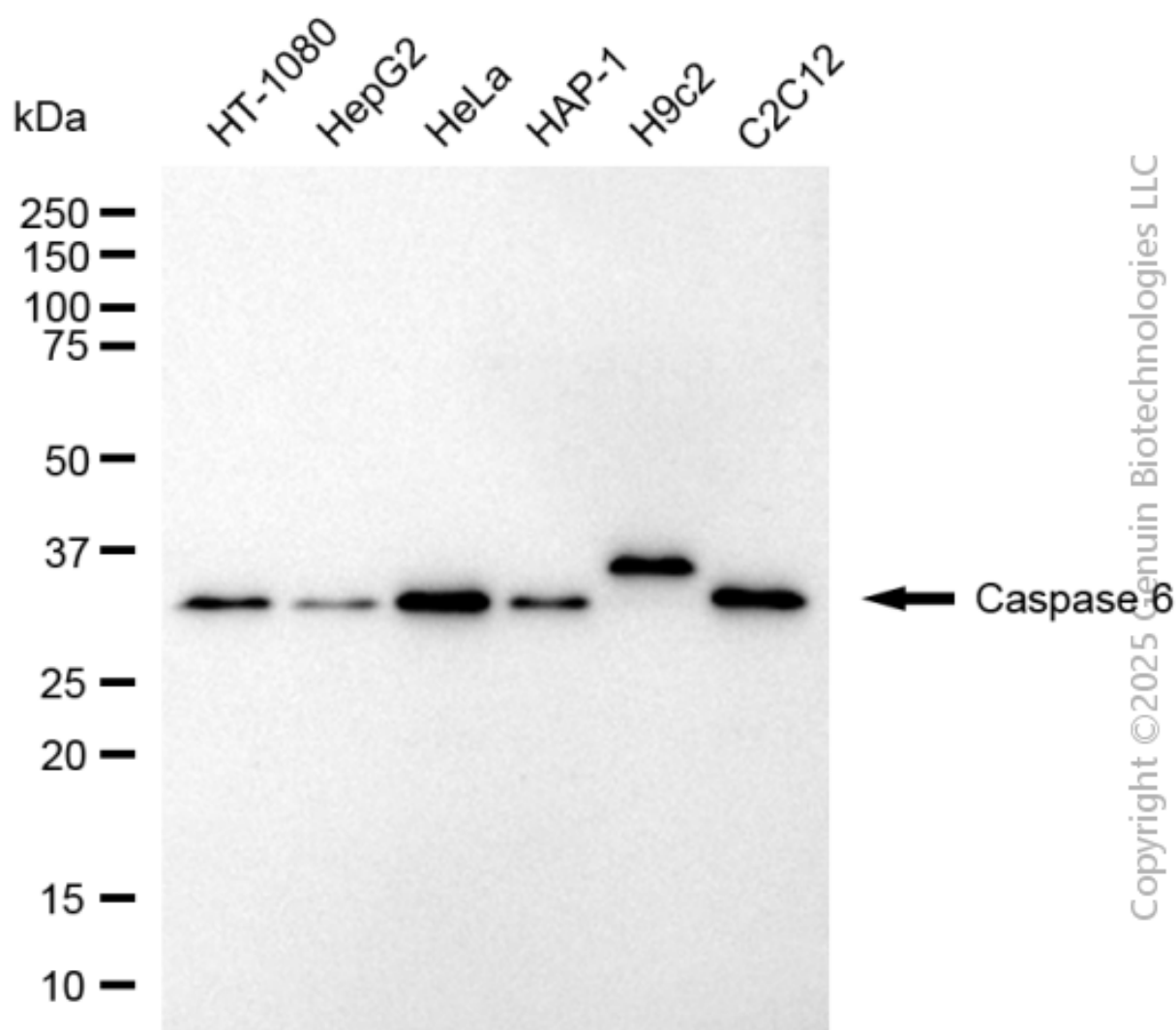
SUPPORT

SUPPORT@GENUINBIOTECH.COM
TEL: +1-540-855-7041

ORDERS

SALES@GENUINBIOTECH.COM
FAX: +1-540-855-7041

WWW.GENUINBIOTECH.COM



Western blotting analysis using anti-caspase 6 antibody (Cat#4997). Total cell lysates (30 μ g) from various cell lines were loaded and separated by SDS-PAGE. The blot was incubated with anti-caspase 6 antibody (Cat#4997, 1:2,500) and HRP-conjugated goat anti-rabbit secondary antibody (Cat#201, 1:20,000) respectively. Image was developed using FeQ™ ECL Substrate Kit (Cat#226).