

# Anti-Cytokeratin 7 Rabbit Monoclonal Antibody



**Catalog #: 50101**

## Aliases

SCL; Keratin, type II cytoskeletal 7; Cytokeratin-7; CK-7; Keratin-7; K7; Sarcolectin; Type-II keratin Kb7

## Background

Gene Name: KRT7

NCBI Gene Entry: [3855](#)

UniProt Entry: [P08729](#)

## Application Information

Molecular Weight: Predicted, 51 kDa; observed, 54 kDa

Clonality: Rabbit monoclonal antibody

Clone ID: 24GB8395

Species Reactivity: Human

Applications Tested: Western blotting (WB), immunohistochemistry (IHC)

## Immunogen

Recombinant protein of human Cytokeratin 7

## Isotype

Rabbit IgG

## Storage Buffer

Supplied in PBS (pH 7.3) containing 50% glycerol, and 0.05% Proclin300.

## Storage

Store at -20 °C for one year.

## Recommended Dilutions

Western Blotting (WB): 1:500-1:1,000

Immunohistochemistry (IHC): 1:100-1:200

**Note:** This product is for research use only.

## Validation Data

---

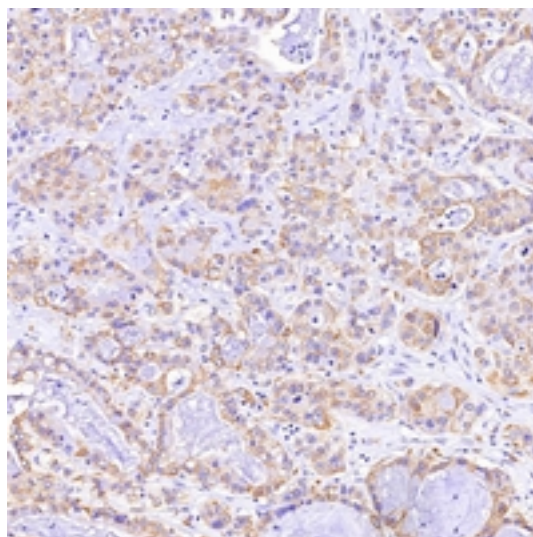
### SUPPORT

SUPPORT@GENUINBIOTECH.COM  
TEL: +1-540-855-7041

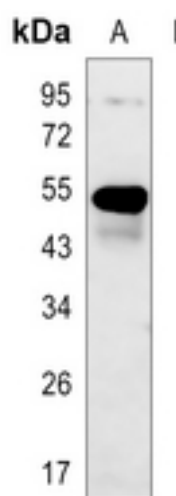
### ORDERS

SALES@GENUINBIOTECH.COM  
FAX: +1-540-855-7041

[WWW.GENUINBIOTECH.COM](http://WWW.GENUINBIOTECH.COM)



Immunohistochemical analysis of Cytokeratin 7 staining in human liver cancer formalin fixed paraffin embedded tissue section. The section was pre-treated using heat mediated antigen retrieval with sodium citrate buffer (pH 6.0). The section was then incubated with the antibody at room temperature and detected using an HRP conjugated compact polymer system. DAB was used as the chromogen. The section was then counterstained with haematoxylin and mounted with DPX.



Western blotting analysis of Cytokeratin 7 expression in SGC7901 (A) whole cell lysates.