

Catalog #: 50106

Aliases

EPN; Neprilysin; Atriopeptidase; Common acute lymphocytic leukemia antigen; CALLA; Enkephalinase; Neutral endopeptidase 24.11; NEP; Neutral endopeptidase; Skin fibroblast elastase; SFE; CD10

Background

Gene Name: MME

NCBI Gene Entry: [4311](#)

UniProt Entry: [P08473](#)

Application Information

Molecular Weight: Predicted, 85 kDa; observed, 85 kDa

Clonality: Rabbit monoclonal antibody

Clone ID: 24GB8420

Species Reactivity: Human, mouse, rat

Applications Tested: Western blotting (WB), immunohistochemistry (IHC)

Immunogen

Recombinant protein of human CD10

Isotype

Rabbit IgG

Storage Buffer

Supplied in PBS (pH 7.3) containing 50% glycerol, and 0.05% Proclin300.

Storage

Store at -20 °C for one year.

Recommended Dilutions

Western Blotting (WB): 1:500-1:1,000

Immunohistochemistry (IHC): 1:100-1:200

Note: This product is for research use only.

Validation Data

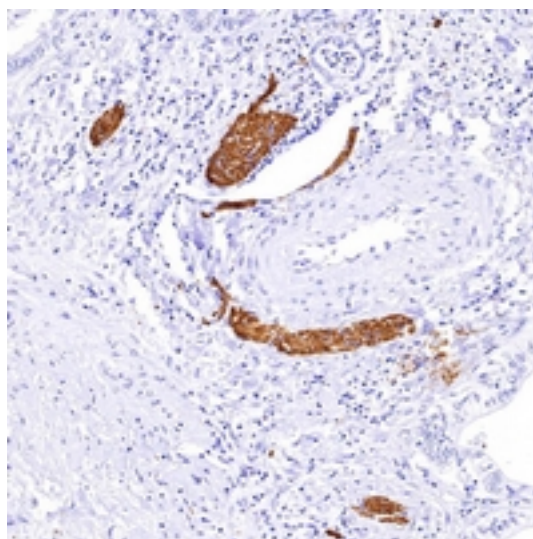
SUPPORT

SUPPORT@GENUINBIOTECH.COM
TEL: +1-540-855-7041

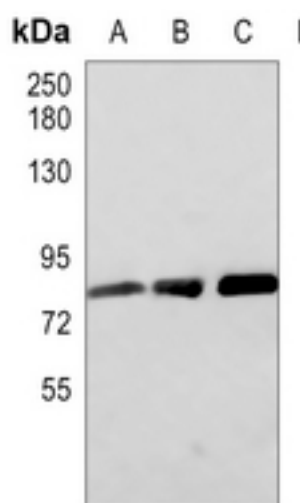
ORDERS

SALES@GENUINBIOTECH.COM
FAX: +1-540-855-7041

WWW.GENUINBIOTECH.COM



Immunohistochemical analysis of CD10 staining in human liver cancer formalin fixed paraffin embedded tissue section. The section was pre-treated using heat mediated antigen retrieval with sodium citrate buffer (pH 6.0). The section was then incubated with the antibody at room temperature and detected using an HRP conjugated compact polymer system. DAB was used as the chromogen. The section was then counterstained with haematoxylin and mounted with DPX.



Western blotting analysis of CD10 expression in mouse kidney (A), rat liver (B), rat kidney (C) whole cell lysates.