

Catalog #: 50116

Aliases

KRT6E; Keratin, type II cytoskeletal 6C; Cytokeratin-6C; CK-6C; Cytokeratin-6E; CK-6E; Keratin K6h; Keratin-6C; K6C; Type-II keratin Kb12

Background

Gene Name: KRT6C

NCBI Gene Entry: [286887](#)

UniProt Entry: [P48668](#)

Application Information

Molecular Weight: Predicted, 60 kDa

Clonality: Rabbit monoclonal antibody

Clone ID: 24GB8470

Species Reactivity: Human

Applications Tested: Immunohistochemistry (IHC)

Immunogen

Recombinant protein of human Keratin 6

Isotype

Rabbit IgG

Storage Buffer

Supplied in PBS (pH 7.3) containing 50% glycerol, and 0.05% Proclin300.

Storage

Store at -20 °C for one year.

Recommended Dilutions

Immunohistochemistry (IHC): 1:100-1:200

Note: This product is for research use only.

Validation Data

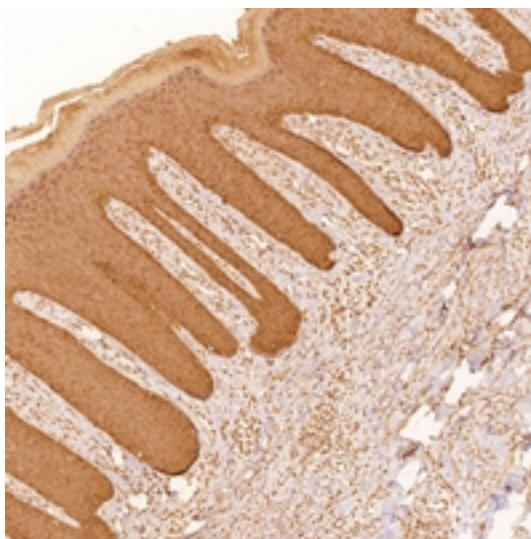
SUPPORT

SUPPORT@GENUINBIOTECH.COM
TEL: +1-540-855-7041

ORDERS

SALES@GENUINBIOTECH.COM
FAX: +1-540-855-7041

WWW.GENUINBIOTECH.COM



Immunohistochemical analysis of Keratin 6 staining in human skin formalin fixed paraffin embedded tissue section. The section was pre-treated using heat mediated antigen retrieval with sodium citrate buffer (pH 6.0). The section was then incubated with the antibody at room temperature and detected using an HRP conjugated compact polymer system. DAB was used as the chromogen. The section was then counterstained with haematoxylin and mounted with DPX.