

Catalog #: 50122

Aliases

HER2; MLN19; NEU; NGL; Receptor tyrosine-protein kinase erbB-2; Metastatic lymph node gene 19 protein; MLN 19; Proto-oncogene Neu; Proto-oncogene c-ErbB-2; Tyrosine kinase-type cell surface receptor HER2; p185erbB2; CD340

Background

Gene Name: ERBB2

NCBI Gene Entry: [2064](#)

UniProt Entry: [P04626](#)

Application Information

Molecular Weight: Predicted, 138 kDa

Clonality: Rabbit monoclonal antibody

Clone ID: 24GB8500

Species Reactivity: Human

Applications Tested: Immunohistochemistry (IHC)

Immunogen

Recombinant protein of human HER2

Isotype

Rabbit IgG

Storage Buffer

Supplied in PBS (pH 7.3) containing 50% glycerol, and 0.05% Proclin300.

Storage

Store at -20 °C for one year.

Recommended Dilutions

Immunohistochemistry (IHC): 1:100-1:200

Note: This product is for research use only.

Validation Data

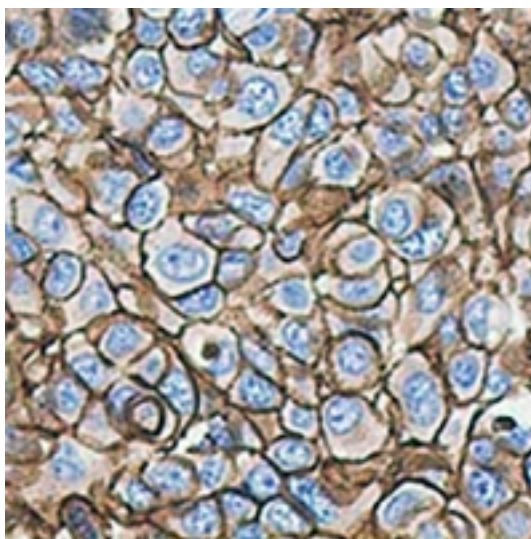
SUPPORT

SUPPORT@GENUINBIOTECH.COM
TEL: +1-540-855-7041

ORDERS

SALES@GENUINBIOTECH.COM
FAX: +1-540-855-7041

WWW.GENUINBIOTECH.COM



Immunohistochemical analysis of HER2 staining in human lung cancer formalin fixed paraffin embedded tissue section. The section was pre-treated using heat mediated antigen retrieval with sodium citrate buffer (pH 6.0). The section was then incubated with the antibody at room temperature and detected using an HRP conjugated compact polymer system. DAB was used as the chromogen. The section was then counterstained with haematoxylin and mounted with DPX.