

## Catalog #: 50128

### Aliases

Aldehyde dehydrogenase family 16 member A1

### Background

Gene Name: ALDH16A1

NCBI Gene Entry: [126133](#)

UniProt Entry: [Q8IZ83](#)

### Application Information

Molecular Weight: Predicted, 85 kDa; observed, 80 kDa

Clonality: Rabbit monoclonal antibody

Clone ID: 24GB8530

Species Reactivity: Human, mouse, rat

Applications Tested: Western blotting (WB), immunohistochemistry (IHC)

### Immunogen

A synthesized peptide derived from human ALDH16A1

### Isotype

Rabbit IgG

### Storage Buffer

Supplied in PBS containing 50% glycerol, 0.2% BSA and 0.02% sodium azide.

### Storage

Store at -20 °C for one year.

### Recommended Dilutions

Western Blotting (WB): 1:500-1:1,000

Immunohistochemistry (IHC): 1:50-1:200

**Note:** This product is for research use only.

### Validation Data

---

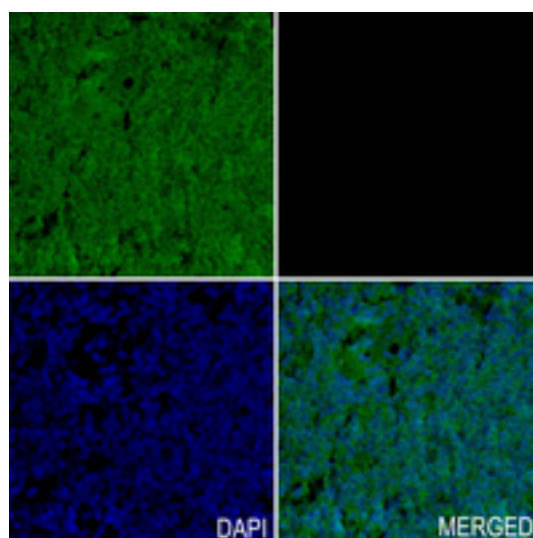
#### SUPPORT

SUPPORT@GENUINBIOTECH.COM  
TEL: +1-540-855-7041

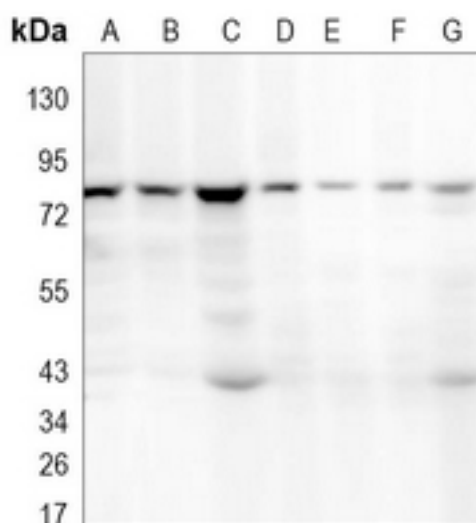
#### ORDERS

SALES@GENUINBIOTECH.COM  
FAX: +1-540-855-7041

[WWW.GENUINBIOTECH.COM](http://WWW.GENUINBIOTECH.COM)



Immunohistochemical analysis of ALDH16A1 staining in human tonsil formalin fixed paraffin embedded tissue section. The section was pre-treated using heat mediated antigen retrieval with sodium citrate buffer (pH 6.0). The section was then incubated with the antibody at room temperature and detected using an HRP conjugated compact polymer system. Tyramide-AF488 (green) was used as the chromogen. The section was then counterstained with DAPI (blue).



Western blotting analysis of ALDH16A1 expression in HEK293T (A), HepG2 (B), THP1 (C), mouse liver (D), mouse kidney (E), rat liver (F), rat kidney (G) whole cell lysates.