

## Catalog #: 5014

### Aliases

NFKB1; Nuclear Factor Kappa B Subunit 1; Nuclear Factor Of Kappa Light Polypeptide Gene Enhancer In B-Cells 1; Nuclear Factor NF-Kappa-B P105 Subunit; NF-KappaB; NFKB-P50; NFkappaBII; NF-KB1; KBF1; DNA-Binding Factor KBF1; EBP-1; P105; P50; Nuclear Factor Kappa-B DNA Binding Subunit; Nuclear Factor NF-Kappa-B P50 Subunit; NF-Kappabeta; NF-Kappa-B1; NFKB-P105; CVID12; NF-KB

### Background

Gene Name: NFKB1

NCBI Gene Entry: [4790](#)

UniProt Entry: [P19838](#)

### Application Information

Molecular Weight: Predicted, 105 kDa; observed, 105 kDa

Clonality: Rabbit polyclonal antibody

Species Reactivity: Human, mouse

Applications Tested: Western blotting (WB)

### Immunogen

A synthesized peptide derived from human NF-kappaB p105

### Isotype

Rabbit IgG

### Storage Buffer

Supplied in PBS (pH 7.4) containing 50% glycerol, and 0.02% sodium azide.

### Storage

Store at -20 °C for one year.

### Recommended Dilutions

Western Blotting (WB): 1:500-1:2,500

**Note:** This product is for research use only.

### Validation Data

---

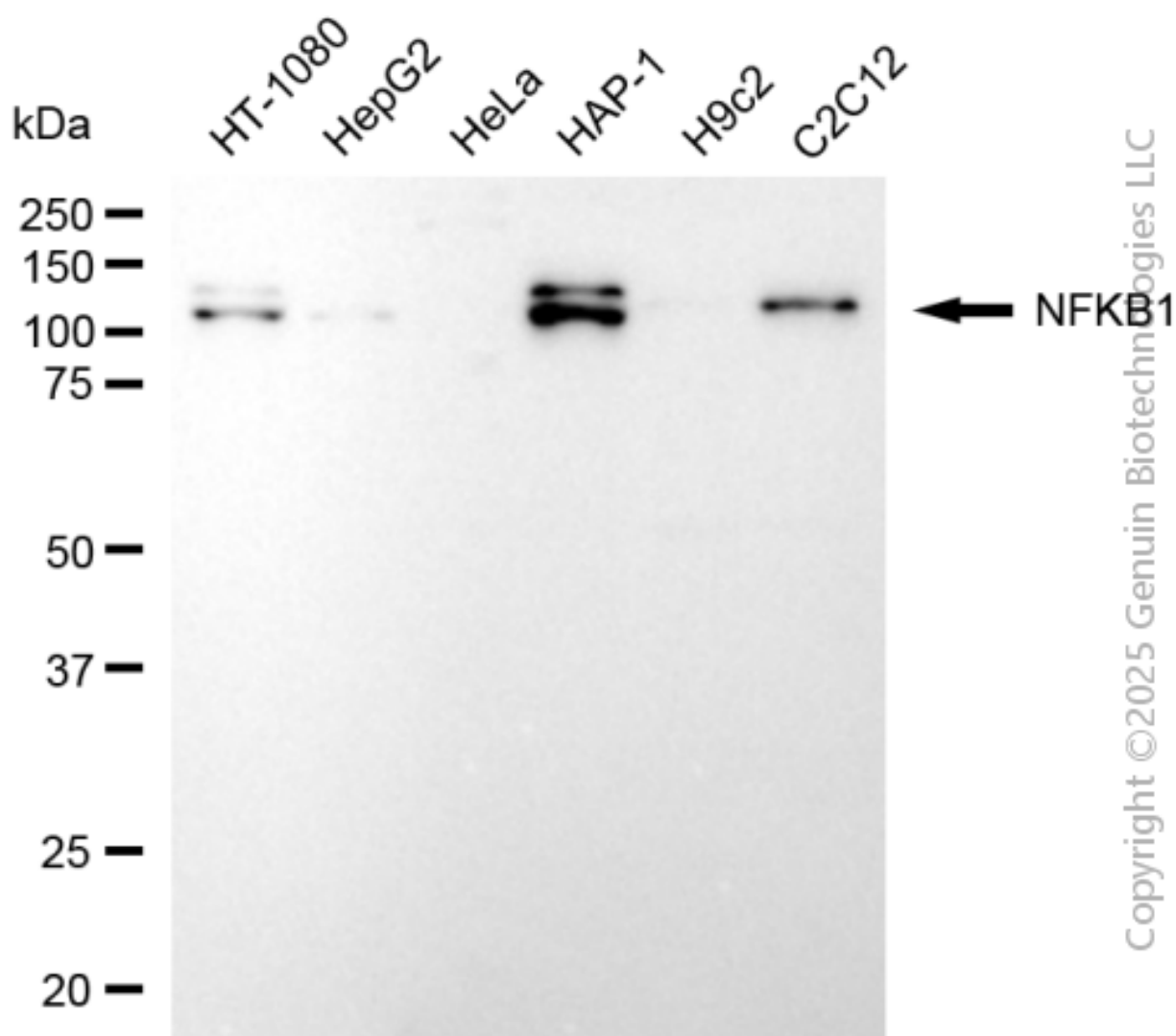
#### SUPPORT

SUPPORT@GENUINBIOTECH.COM  
TEL: +1-540-855-7041

#### ORDERS

SALES@GENUINBIOTECH.COM  
FAX: +1-540-855-7041

[WWW.GENUINBIOTECH.COM](http://WWW.GENUINBIOTECH.COM)



Copyright ©2025 Genuin Biotechnologies LLC

Western blotting analysis using anti-NFKB1 antibody (Cat#5014). Total cell lysates (30  $\mu$ g) from various cell lines were loaded and separated by SDS-PAGE. The blot was incubated with anti-NFKB1 antibody (Cat#5014, 1:2,500) and HRP-conjugated goat anti-rabbit secondary antibody (Cat#201, 1:20,000) respectively. Image was developed using NaQ™ ECL Substrate Kit (Cat#716).

**SUPPORT**

SUPPORT@GENUINBIOTECH.COM  
TEL: +1-540-855-7041

**ORDERS**

SALES@GENUINBIOTECH.COM  
FAX: +1-540-855-7041

[WWW.GENUINBIOTECH.COM](http://WWW.GENUINBIOTECH.COM)