

Catalog #: 50230

Aliases

Choline O-acetyltransferase; CHOACTase; ChAT; Choline acetylase

Background

Gene Name: CHAT

NCBI Gene Entry: [1103](#)

UniProt Entry: [P28329](#)

Application Information

Molecular Weight: Predicted, 82 kDa; observed, 82 kDa

Clonality: Rabbit polyclonal antibody

Species Reactivity: Human, mouse, rat, chicken, pig, zebrafish

Applications Tested: Western blotting (WB), immunocytochemistry (IC)

Immunogen

A synthesized peptide derived from human CHAT

Isotype

Rabbit IgG

Storage Buffer

Supplied in PBS (pH 7.3) containing 30% glycerol, and 0.01% sodium azide.

Storage

Store at -20 °C for one year.

Recommended Dilutions

Western Blotting (WB): 1:500-1:1,000

Immunocytochemistry (IC): 1:50-1:200

Note: This product is for research use only.

Validation Data

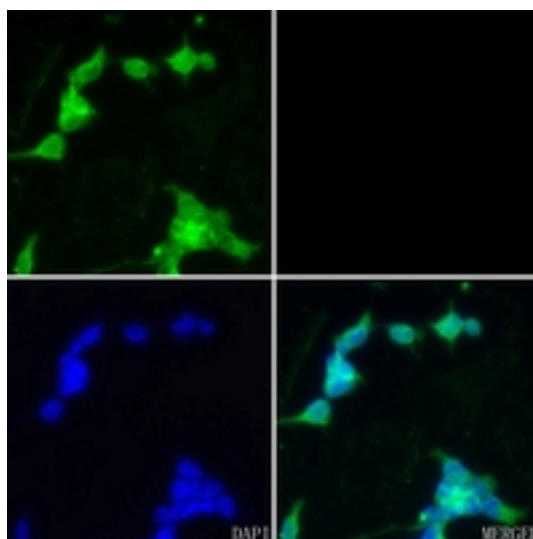
SUPPORT

SUPPORT@GENUINBIOTECH.COM
TEL: +1-540-855-7041

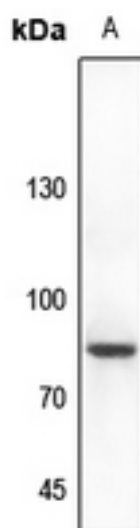
ORDERS

SALES@GENUINBIOTECH.COM
FAX: +1-540-855-7041

WWW.GENUINBIOTECH.COM



Immunocytochemical analysis of CHAT staining in HEK293T cells. Formalin-fixed cells were permeabilized with 0.1% Triton X-100 in TBS for 5-10 minutes and blocked with 3% BSA-PBS for 30 minutes at room temperature. Cells were probed with the primary antibody in 3% BSA-PBS and incubated overnight at 4 °C in a humidified chamber. Cells were washed with PBST and incubated with a AF488-conjugated secondary antibody (green) in PBS at room temperature in the dark. Phalloidin - AF594 was used to stain Actin filaments (red). DAPI was used to stain the cell nuclei (blue).



Western blotting analysis of CHAT expression in zebrafish (A) whole cell lysates.