

Catalog #: 5028

Aliases

ILF2; Interleukin Enhancer Binding Factor 2; NF45; Interleukin Enhancer Binding Factor 2, 45kDa; Interleukin Enhancer Binding Factor 2, 45kD; Interleukin Enhancer-Binding Factor 2; Nuclear Factor Of Activated T-Cells, 45-KDa; Nuclear Factor Of Activated T-Cells 45 KDa; PRO3063

Background

Gene Name: ILF2

NCBI Gene Entry: [3608](#)

UniProt Entry: [Q12905](#)

Application Information

Molecular Weight: Predicted, 43 kDa; observed, 41 kDa

Clonality: Mouse monoclonal antibody

Clone ID: 24GB13925

Species Reactivity: Human, mouse, rat

Applications Tested: Western blotting (WB), flow cytometry (FCM)

Immunogen

Recombinant protein of human ILF2

Isotype

Mouse IgG1

Storage Buffer

Supplied in PBS (pH 7.4) containing 50% glycerol, and 0.02% sodium azide.

Storage

Store at -20 °C for one year.

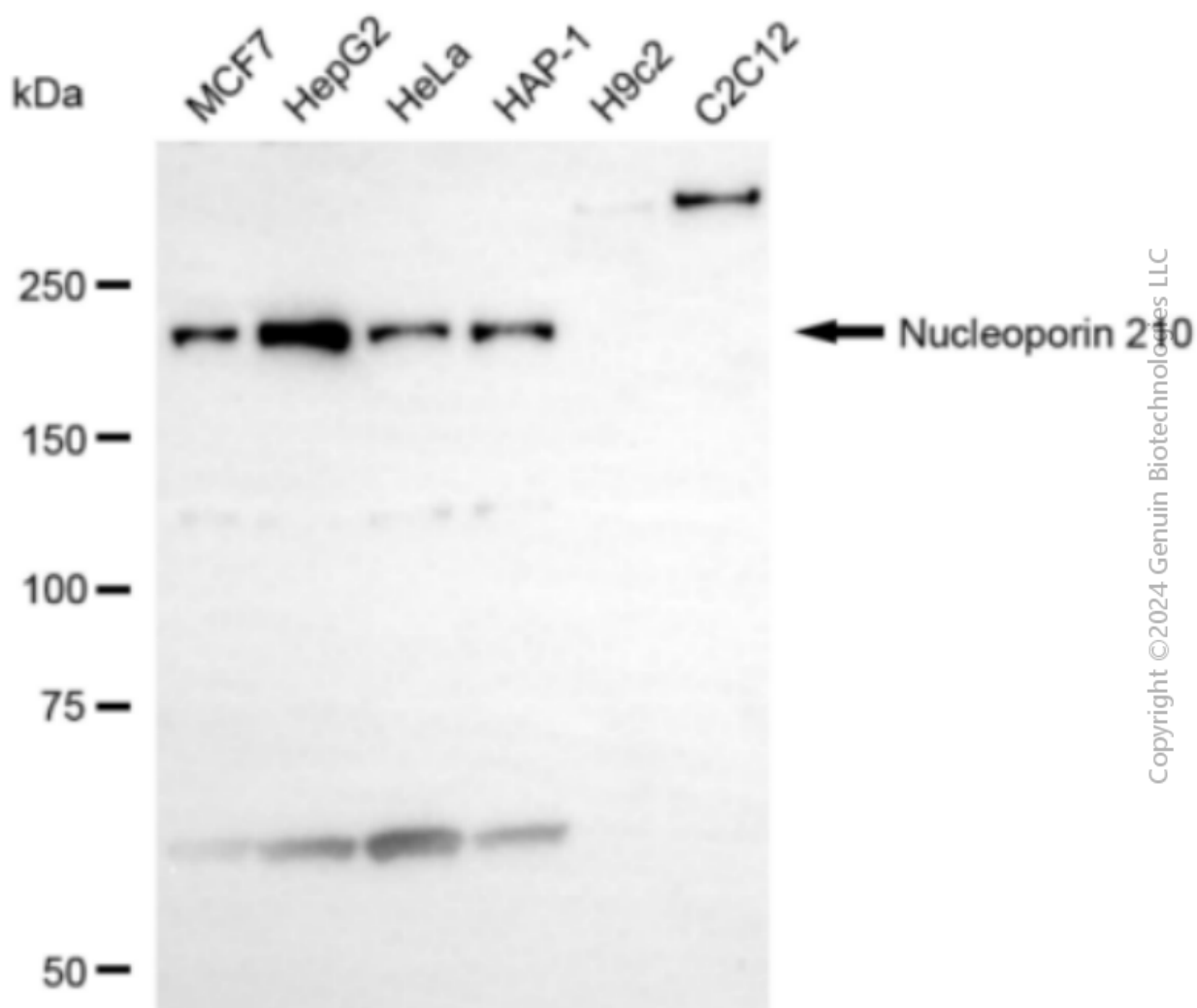
Recommended Dilutions

Western Blotting (WB): 1:200-1:1,000

Flow Cytometry (FCM): 1:2,000

Note: This product is for research use only.

Validation Data



Copyright ©2024 Genuin Biotechnologies LLC

Western blotting analysis using anti-ILF2 antibody (Cat#5028). Total cell lysates (30 μ g) from various cell lines were loaded and separated by SDS-PAGE. The blot was incubated with anti-ILF2 antibody (Cat#5028, 1:1,000) and HRP-conjugated goat anti-mouse secondary antibody (Cat#101, 1:20,000) respectively. Image was developed using NaQ™ ECL Substrate Kit (Cat#716).

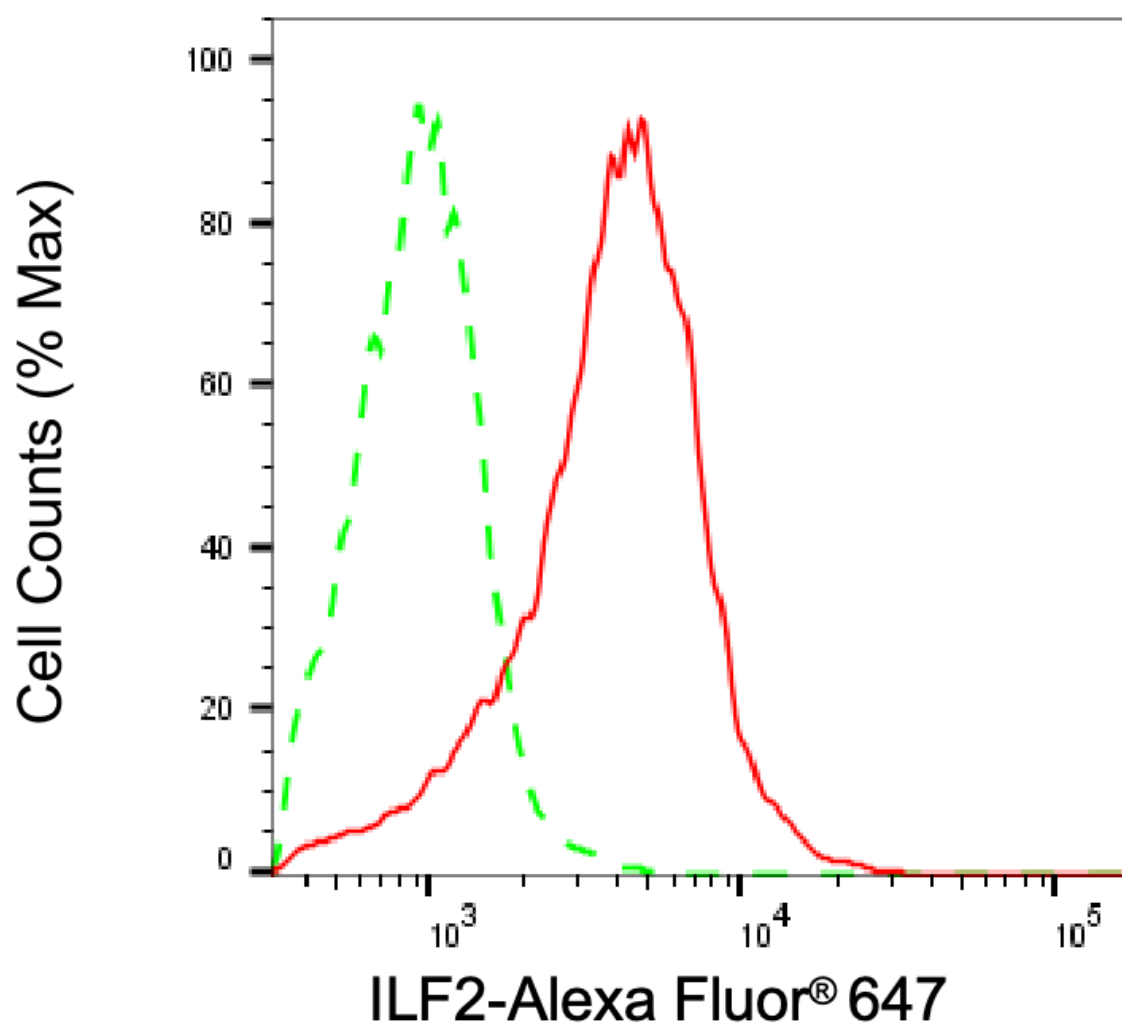
SUPPORT

SUPPORT@GENUINBIOTECH.COM
TEL: +1-540-855-7041

ORDERS

SALES@GENUINBIOTECH.COM
FAX: +1-540-855-7041

WWW.GENUINBIOTECH.COM



Flow cytometric analysis of ILF2 expression in HAP-1 cells using anti-ILF2 antibody (Cat#5028, 1:2,000). Green, isotype control; red, ILF2.