

Catalog #: 5045

Aliases

ROMO1; Reactive Oxygen Species Modulator 1; BA353C18.2; C20orf52; MTGMP; Mitochondrial Targeting GxxxG Motif Protein; Mitochondrial Targeting GXXXG Protein; Epididymis Tissue Protein Li 175; Protein MGR2 Homolog; ROS Modulator 1; Glyrichin; MTGM; Chromosome 20 Open Reading Frame 52; PCM19

Background

Gene Name: ROMO1

NCBI Gene Entry: [140823](#)

UniProt Entry: [P60602](#)

Application Information

Molecular Weight: Predicted, 8 kDa; observed, 8 kDa

Clonality: Mouse monoclonal antibody

Clone ID: 24GB14015

Species Reactivity: Human, mouse, rat

Applications Tested: Western blotting (WB), flow cytometry (FCM)

Immunogen

Recombinant protein of human ROMO1

Isotype

Mouse IgG1

Storage Buffer

Supplied in PBS (pH 7.4) containing 50% glycerol, and 0.02% sodium azide.

Storage

Store at -20 °C for one year.

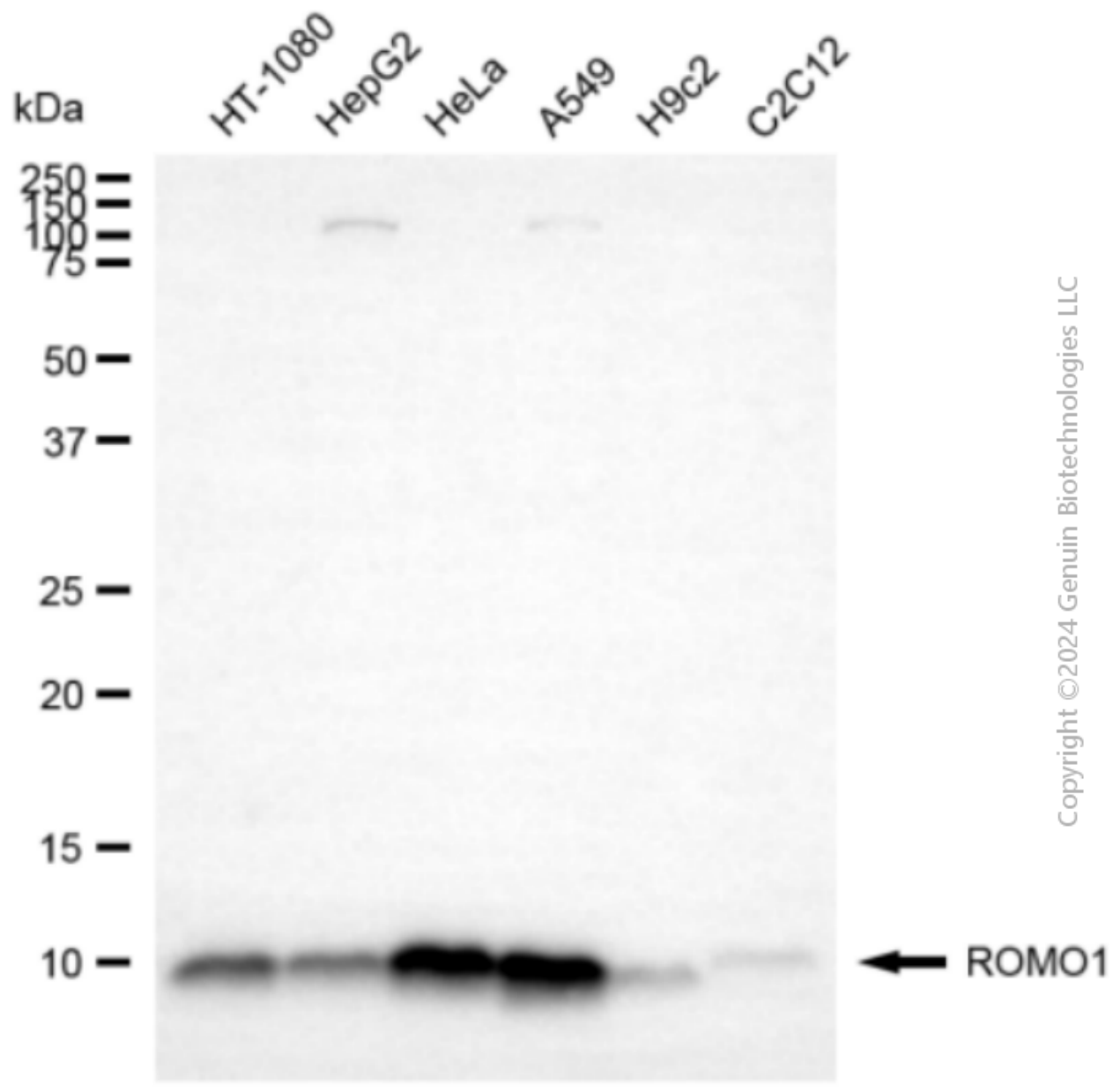
Recommended Dilutions

Western Blotting (WB): 1:500-1:2,500

Flow Cytometry (FCM): 1:2,000

Note: This product is for research use only.

Validation Data



Western blotting analysis using anti-ROMO1 antibody (Cat#5045). Total cell lysates (30 µg) from various cell lines were loaded and separated by SDS-PAGE. The blot was incubated with anti-ROMO1 antibody (Cat#5045, 1:2,500) and HRP-conjugated goat anti-mouse secondary antibody (Cat#101, 1:20,000) respectively. Image was developed using FeQ™ ECL Substrate Kit (Cat#226).

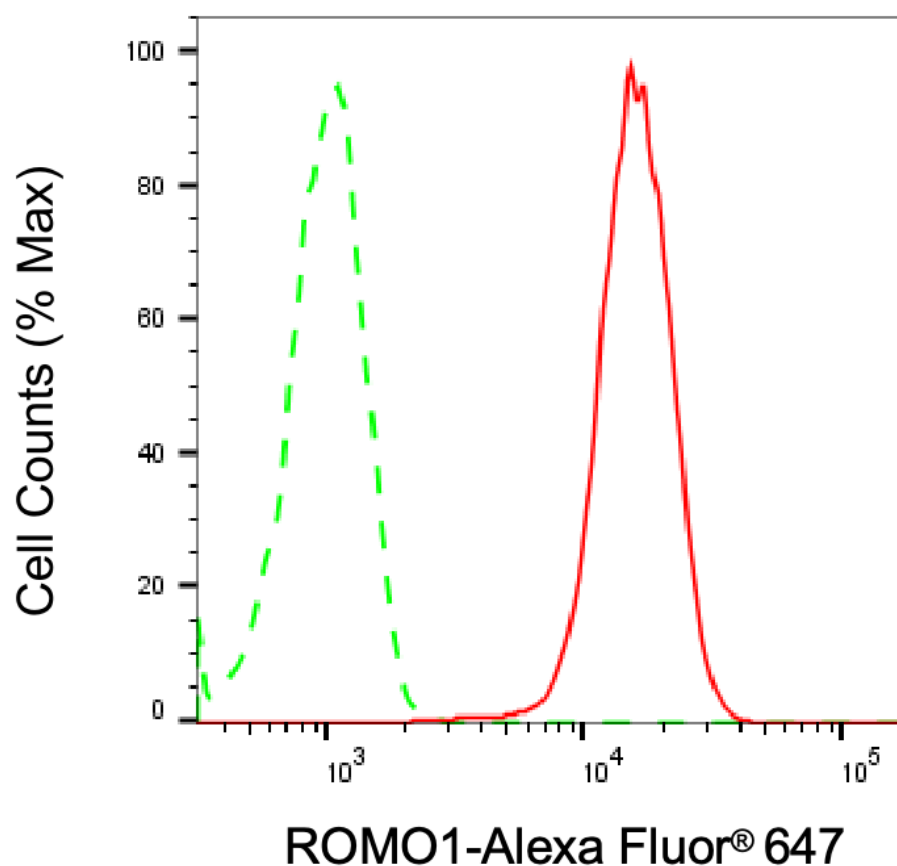
SUPPORT

SUPPORT@GENUINBIOTECH.COM
TEL: +1-540-855-7041

ORDERS

SALES@GENUINBIOTECH.COM
FAX: +1-540-855-7041

WWW.GENUINBIOTECH.COM



Copyright ©2025 Genuin Biotechnologies LLC

Flow cytometric analysis of ROMO1 expression in HeLa cells using anti-ROMO1 antibody (Cat#5045, 1:1,000). Green, isotype control; red, ROMO1.

SUPPORT

SUPPORT@GENUINBIOTECH.COM
TEL: +1-540-855-7041

ORDERS

SALES@GENUINBIOTECH.COM
FAX: +1-540-855-7041

WWW.GENUINBIOTECH.COM