

Catalog #: 50468

Aliases

SMAD1; BSP1; MADH1; MADR1; Mothers against decapentaplegic homolog 1; MAD homolog 1; Mothers against DPP homolog 1; JV4-1; Mad-related protein 1; SMAD family member 1; SMAD 1; Smad1; hSMAD1; Transforming growth factor-beta-signaling protein 1; BSP-1; SMAD5; MADH5; Mothers against decapentaplegic homolog 5; MAD homolog 5; Mothers against DPP homolog 5; JV5-1; SMAD family member 5; SMAD 5; Smad5; hSmad5; SMAD9; MADH6; MADH9; Mothers against decapentaplegic homolog 9; MAD homolog 9; Mothers against DPP homolog 9; Madh6; SMAD family member 9; SMAD 9; Smad9

Background

Gene Name: SMAD1/SMAD5/SMAD9

NCBI Gene Entry: [4086/4090/4093](#)

UniProt Entry: [Q15797/Q99717/O15198](#)

Application Information

Molecular Weight: Predicted, 52 kDa; observed, 52,48 kDa

Clonality: Rabbit polyclonal antibody

Species Reactivity: Human, mouse, rat, bovine, chicken, zebrafish

Applications Tested: Western blotting (WB), immunohistochemistry (IHC)

Immunogen

A synthesized peptide derived from human SMAD1

Isotype

Rabbit IgG

Storage Buffer

Supplied in PBS (pH 7.3) containing 30% glycerol, and 0.01% sodium azide.

Storage

Store at -20 °C for one year.

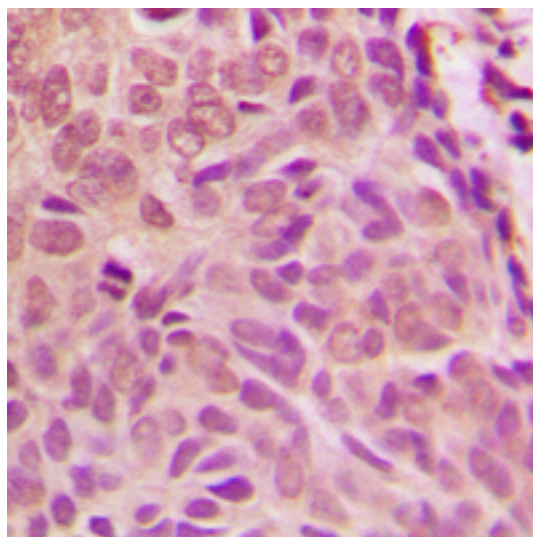
Recommended Dilutions

Western Blotting (WB): 1:500-1:1,000

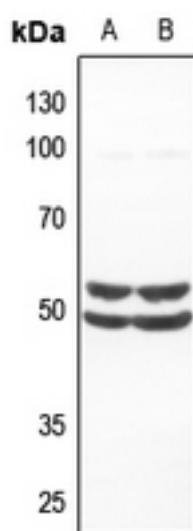
Immunohistochemistry (IHC): 1:100-1:200

Note: This product is for research use only.

Validation Data



Immunohistochemical analysis of SMAD1 staining in human breast cancer formalin fixed paraffin embedded tissue section. The section was pre-treated using heat mediated antigen retrieval with sodium citrate buffer (pH 6.0). The section was then incubated with the antibody at room temperature and detected using an HRP conjugated compact polymer system. DAB was used as the chromogen. The section was then counterstained with haematoxylin and mounted with DPX.



Western blotting analysis of SMAD1 expression in A375 (A), H460 (B) whole cell lysates.