

Catalog #: 5047

Aliases

HGS; Hepatocyte Growth Factor-Regulated Tyrosine Kinase Substrate; Hrs; Protein Pp110; ZFYVE8; Vps27; Human Growth Factor-Regulated Tyrosine Kinase Substrate; HRS

Background

Gene Name: HGS

NCBI Gene Entry: [9146](#)

UniProt Entry: [O14964](#)

Application Information

Molecular Weight: Predicted, 86 kDa; observed, 100 kDa

Clonality: Mouse monoclonal antibody

Clone ID: 24GB14025

Species Reactivity: Human, mouse

Applications Tested: Western blotting (WB), flow cytometry (FCM), immunocytochemistry (IC)

Immunogen

Recombinant protein of human HGS

Isotype

Mouse IgG2b

Storage Buffer

Supplied in PBS (pH 7.4) containing 50% glycerol, and 0.02% sodium azide.

Storage

Store at -20 °C for one year.

Recommended Dilutions

Western Blotting (WB): 1:500-1:2,500

Flow Cytometry (FCM): 1:2,000

Immunocytochemistry (IC): 1:100-1:1,000

Note: This product is for research use only.

Validation Data

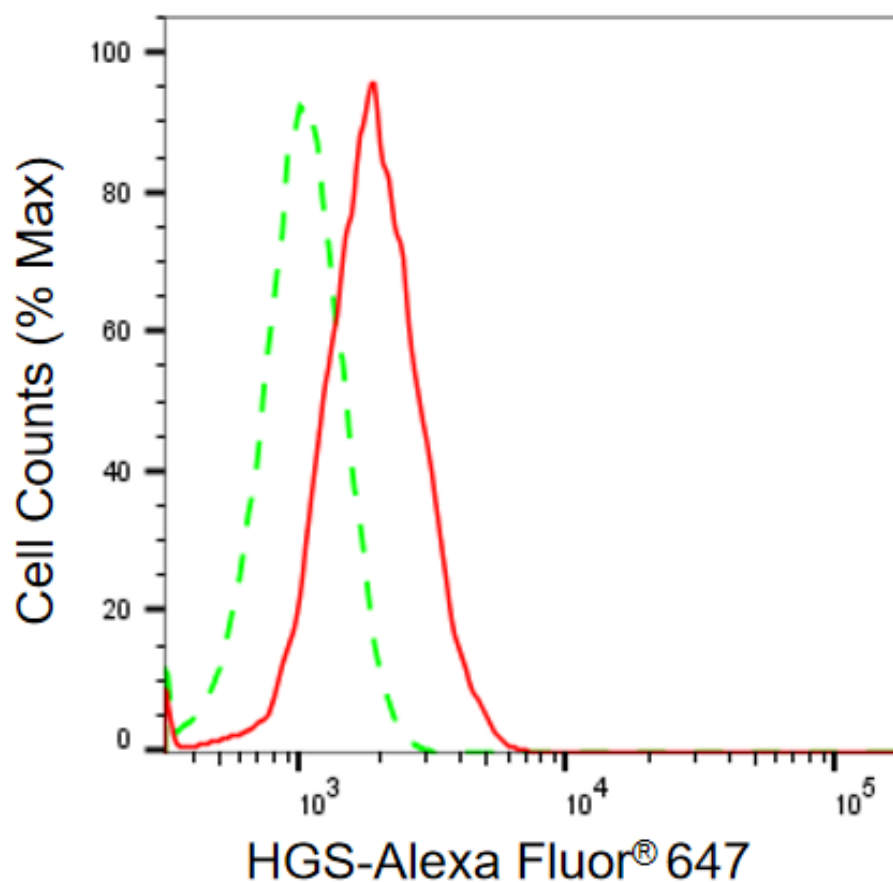
SUPPORT

SUPPORT@GENUINBIOTECH.COM
TEL: +1-540-855-7041

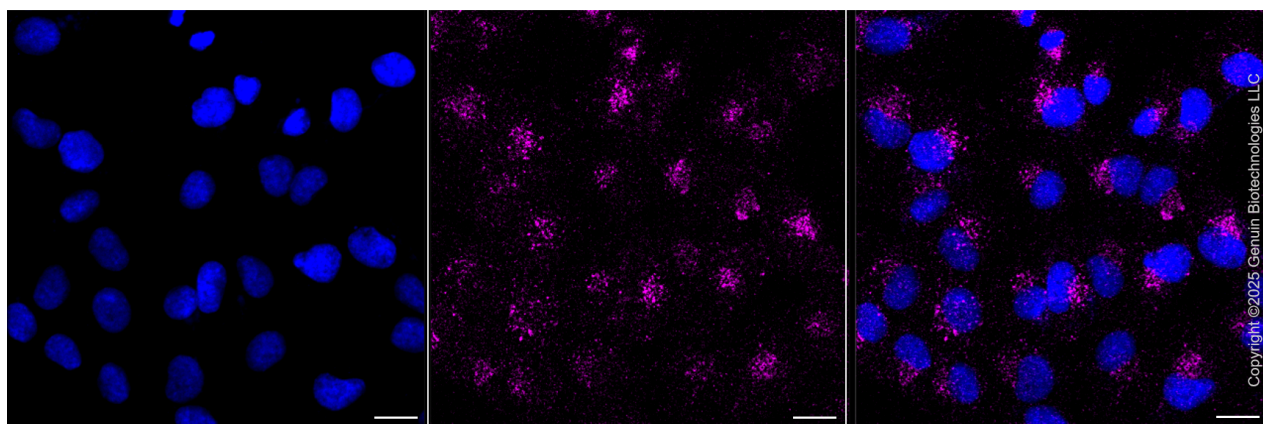
ORDERS

SALES@GENUINBIOTECH.COM
FAX: +1-540-855-7041

WWW.GENUINBIOTECH.COM



Flow cytometric analysis of HGS expression in HT-1080 cells using anti-HGS antibody (Cat#5047, 1:2,000). Green, isotype control; red, HGS.



Immunocytochemical staining of HT-1080 cells with anti-HGS antibody (Cat#5047, 1:1,000). Nuclei were stained blue with DAPI; HGS was stained magenta with Alexa Fluor® 647. Images were taken using Leica stellaris 5. Protein abundance based on laser Intensity and smart gain:

SUPPORT

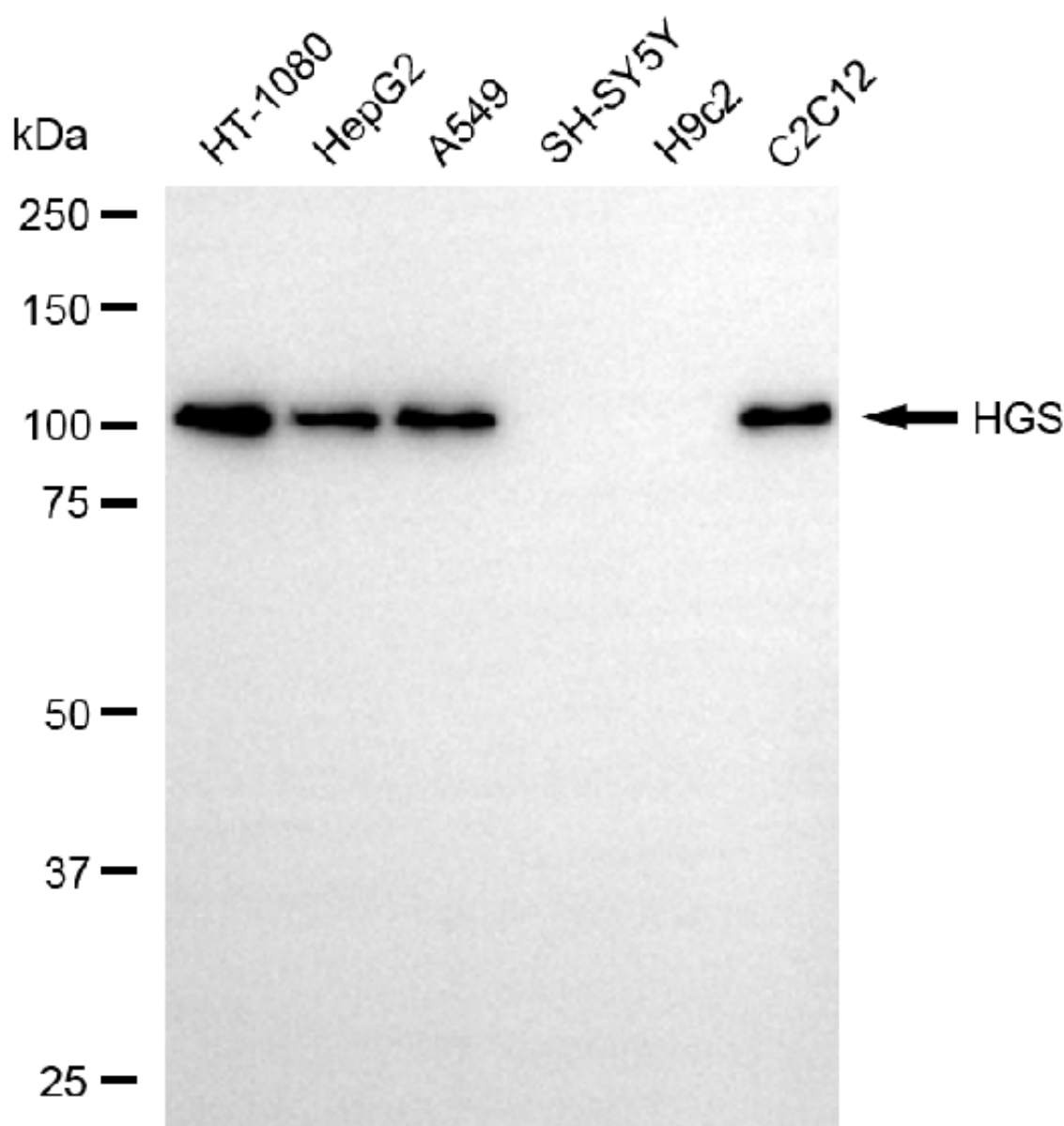
SUPPORT@GENUINBIOTECH.COM
TEL: +1-540-855-7041

ORDERS

SALES@GENUINBIOTECH.COM
FAX: +1-540-855-7041

WWW.GENUINBIOTECH.COM

Low. Scale bar, 20 μ m.



Copyright ©2025 Genuin Biotechnologies LLC

Western blotting analysis using anti-HGS antibody (Cat#5047). Total cell lysates (30 μ g) from various cell lines were loaded and separated by SDS-PAGE. The blot was incubated with anti-HGS antibody (Cat#5047, 1:2,500) and HRP-conjugated goat anti-mouse secondary antibody (Cat#101, 1:20,000) respectively. Image was developed using FeQ™ ECL Substrate Kit (Cat#226).

SUPPORT

SUPPORT@GENUINBIOTECH.COM
TEL: +1-540-855-7041

ORDERS

SALES@GENUINBIOTECH.COM
FAX: +1-540-855-7041

WWW.GENUINBIOTECH.COM