

## Catalog #: 5051

### Aliases

MAGEA3; MAGE Family Member A3; CT1.3; Melanoma-Associated Antigen 3; MAGE-3 Antigen; Antigen MZ2-D; MAGE3; HYPD; HIP8; Cancer/Testis Antigen Family 1, Member 3; Melanoma Antigen Family A3; Cancer/Testis Antigen 1.3; MGC14613; Melanoma Antigen Family A, 3; MAGEA6

### Background

Gene Name: MAGEA3

NCBI Gene Entry: [4102](#)

UniProt Entry: [P43357](#)

### Application Information

Molecular Weight: Predicted, 35 kDa; observed, 48 kDa

Clonality: Mouse monoclonal antibody

Clone ID: 24GB14045

Species Reactivity: Human, mouse

Applications Tested: Western blotting (WB), flow cytometry (FCM)

### Immunogen

Recombinant protein of human MAGEA3

### Isotype

Mouse IgG2b

### Storage Buffer

Supplied in PBS (pH 7.4) containing 50% glycerol, and 0.02% sodium azide.

### Storage

Store at -20 °C for one year.

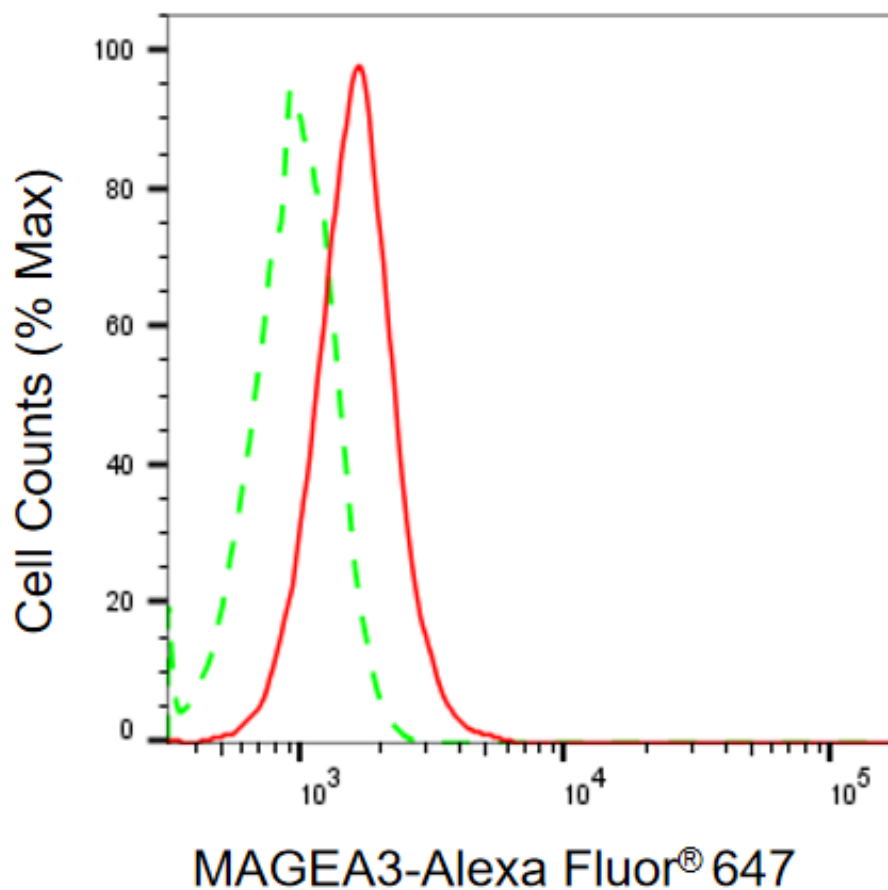
### Recommended Dilutions

Western Blotting (WB): 1:500-1:2,500

Flow Cytometry (FCM): 1:2,000

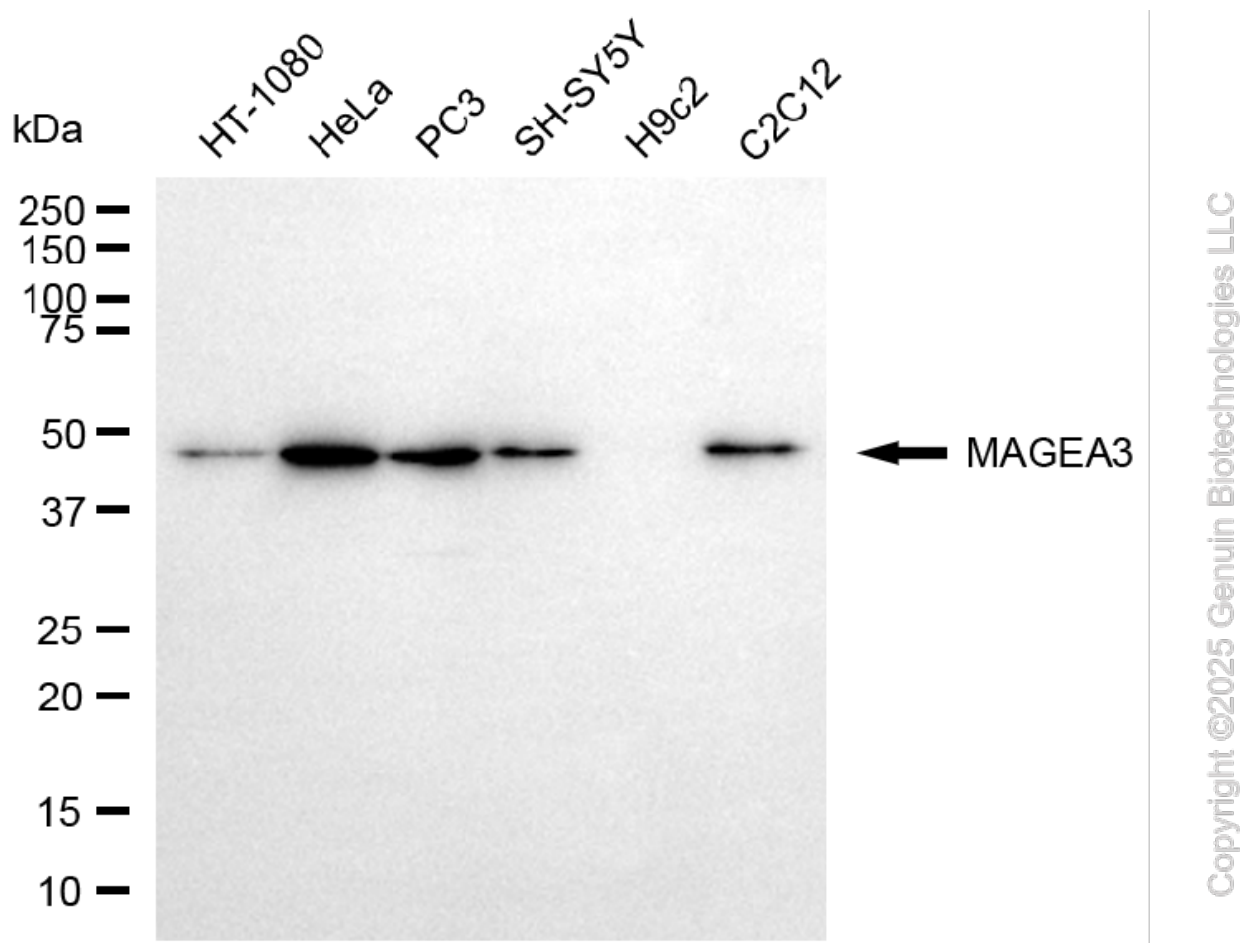
**Note:** This product is for research use only.

## Validation Data



Copyright ©2025 Genuin Biotechnologies LLC

Flow cytometric analysis of MAGEA3 expression in HeLa cells using anti-MAGEA3 antibody (Cat#5051, 1:2,000). Green, isotype control; red, MAGEA3.



Western blotting analysis using anti-MAGEA3 antibody (Cat#5051). Total cell lysates (30  $\mu$ g) from various cell lines were loaded and separated by SDS-PAGE. The blot was incubated with anti-MAGEA3 antibody (Cat#5051, 1:2,500) and HRP-conjugated goat anti-mouse secondary antibody (Cat#101, 1:20,000) respectively. Image was developed using FeQ™ ECL Substrate Kit (Cat#226).

**SUPPORT**

SUPPORT@GENUINBIOTECH.COM  
TEL: +1-540-855-7041

**ORDERS**

SALES@GENUINBIOTECH.COM  
FAX: +1-540-855-7041

[WWW.GENUINBIOTECH.COM](http://WWW.GENUINBIOTECH.COM)