

## Catalog #: 5053

### Aliases

PAX5; Paired Box 5; BSAP; PAX-5; B-Cell Lineage Specific Activator; Paired Box Protein Pax-5; Paired Box Gene 5 (B-Cell Lineage Specific Activator Protein); Paired Box Gene 5 (B-Cell Lineage Specific Activator); B-Cell-Specific Transcription Factor; Paired Box Homeotic Gene 5; Transcription Factor PAX 5; Paired Domain Gene 5; ALL3

### Background

Gene Name: PAX5

NCBI Gene Entry: [5079](#)

UniProt Entry: [Q02548](#)

### Application Information

Molecular Weight: Predicted, 42 kDa; observed, 45 kDa

Clonality: Mouse monoclonal antibody

Clone ID: 24GB14055

Species Reactivity: Human

Applications Tested: Western blotting (WB)

### Immunogen

Recombinant protein of human PAX5

### Isotype

Mouse IgG1

### Storage Buffer

Supplied in PBS (pH 7.4) containing 50% glycerol, and 0.02% sodium azide.

### Storage

Store at -20 °C for one year.

### Recommended Dilutions

Western Blotting (WB): 1:500-1:2,500

**Note:** This product is for research use only.

### Validation Data

---

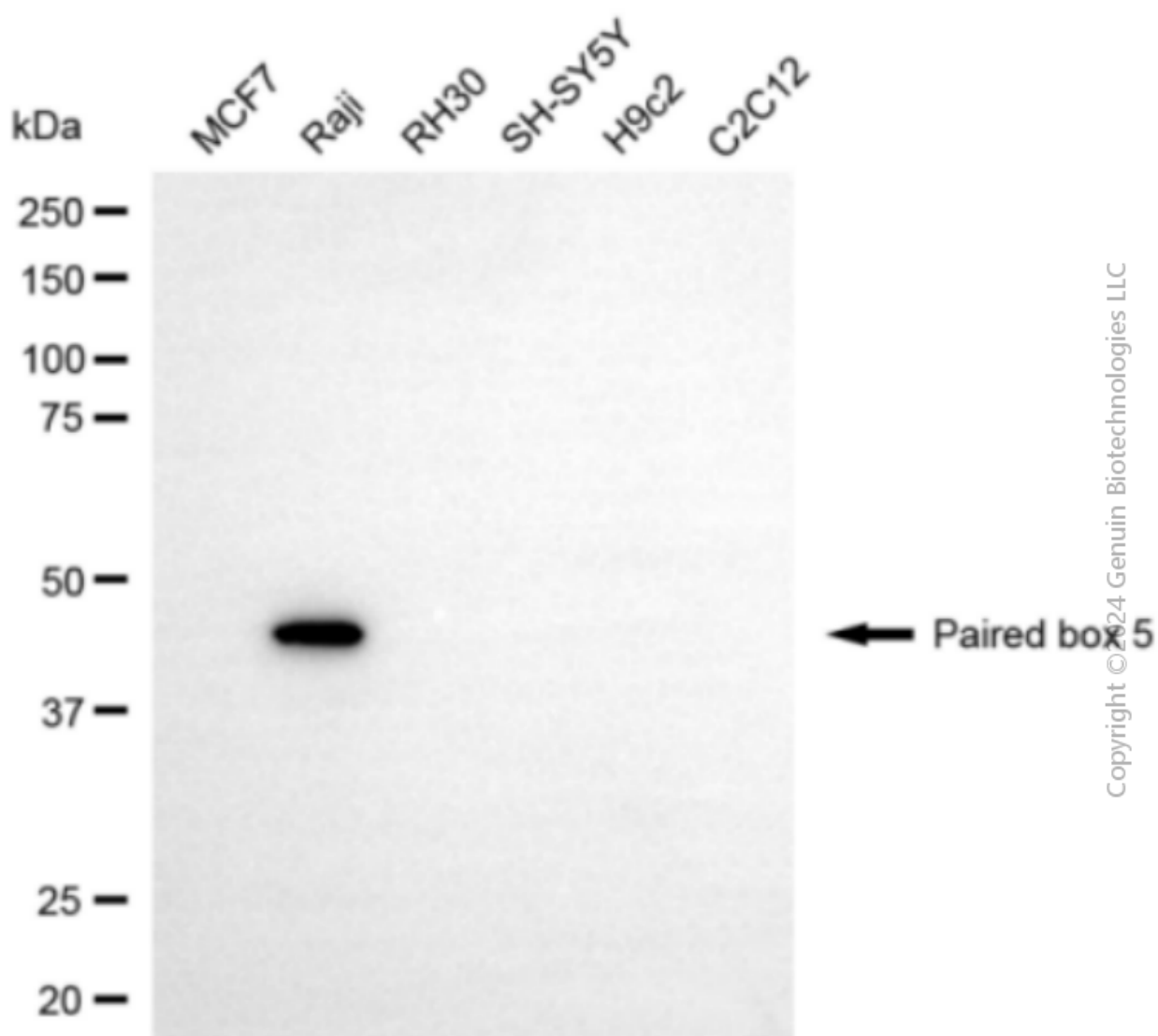
#### SUPPORT

SUPPORT@GENUINBIOTECH.COM  
TEL: +1-540-855-7041

#### ORDERS

SALES@GENUINBIOTECH.COM  
FAX: +1-540-855-7041

[WWW.GENUINBIOTECH.COM](http://WWW.GENUINBIOTECH.COM)



Western blotting analysis using anti-paired box 5 antibody (Cat#5053). Total cell lysates (30  $\mu$ g) from various cell lines were loaded and separated by SDS-PAGE. The blot was incubated with anti-paired box 5 antibody (Cat#5053, 1:2,500) and HRP-conjugated goat anti-mouse secondary antibody (Cat#101, 1:20,000) respectively. Image was developed using FeQ™ ECL Substrate Kit (Cat#226).

**SUPPORT**

SUPPORT@GENUINBIOTECH.COM  
TEL: +1-540-855-7041

**ORDERS**

SALES@GENUINBIOTECH.COM  
FAX: +1-540-855-7041

[WWW.GENUINBIOTECH.COM](http://WWW.GENUINBIOTECH.COM)