

Catalog #: 5057

Aliases

MRPL10; Mitochondrial Ribosomal Protein L10; MRP-L10; MRP-L8; RPML8; MRPL8; 39S Ribosomal Protein L10, Mitochondrial; L10MT; UL10m; 39S Ribosomal Protein L8, Mitochondria; Large Ribosomal Subunit Protein UL10m; MGC17973; L8mt; Mitochondrial Large Ribosomal Subunit Protein UL10m; L10mt

Background

Gene Name: MRPL10

NCBI Gene Entry: [124995](#)

UniProt Entry: [Q7Z7H8](#)

Application Information

Molecular Weight: Predicted, 29 kDa; observed, 27 kDa

Clonality: Mouse monoclonal antibody

Clone ID: 24GB14075

Species Reactivity: Human

Applications Tested: Western blotting (WB)

Immunogen

Recombinant protein of human MRPL10

Isotype

Mouse IgG2b

Storage Buffer

Supplied in PBS (pH 7.4) containing 50% glycerol, and 0.02% sodium azide.

Storage

Store at -20 °C for one year.

Recommended Dilutions

Western Blotting (WB): 1:500-1:2,500

Note: This product is for research use only.

Validation Data

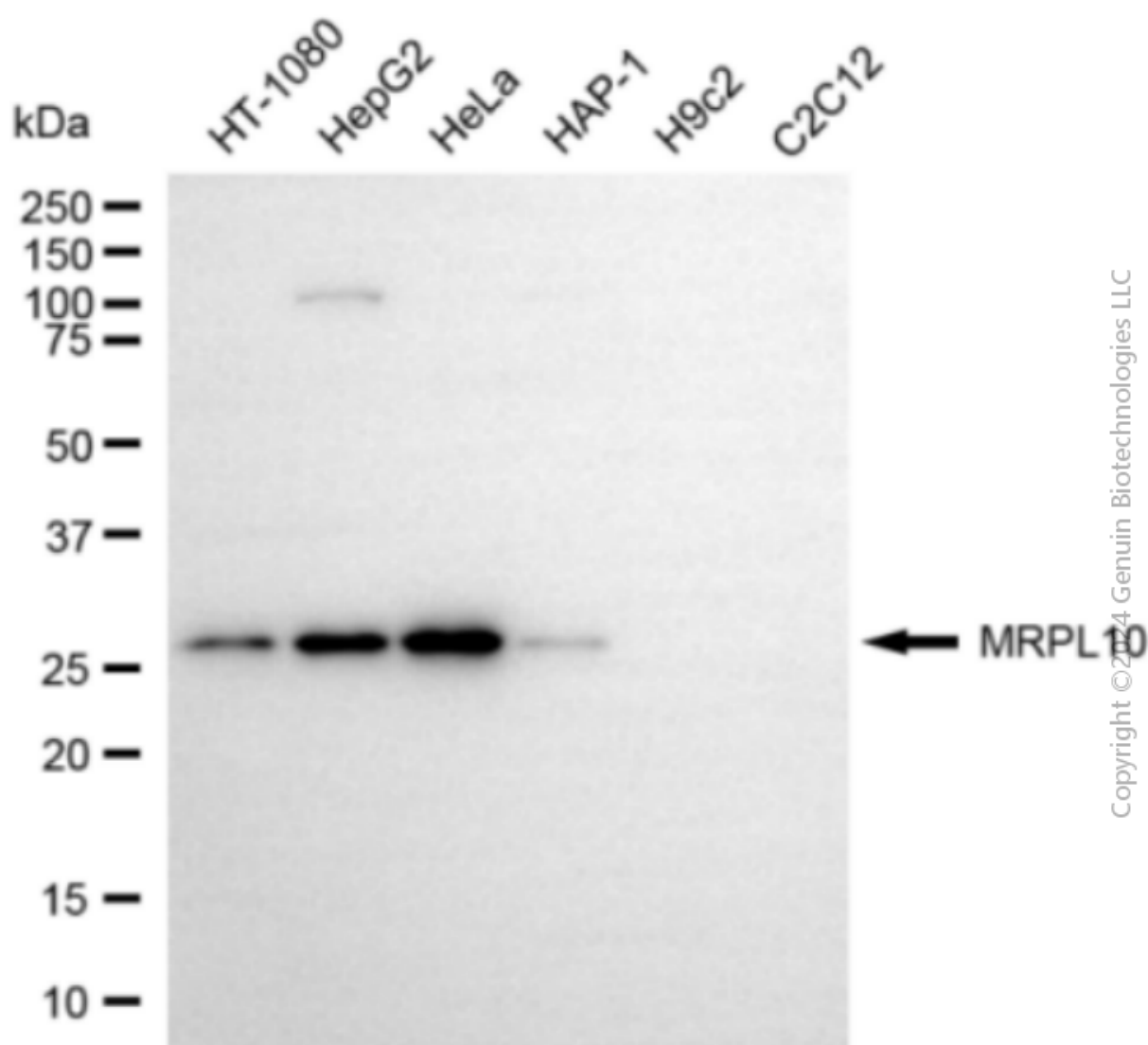
SUPPORT

SUPPORT@GENUINBIOTECH.COM
TEL: +1-540-855-7041

ORDERS

SALES@GENUINBIOTECH.COM
FAX: +1-540-855-7041

WWW.GENUINBIOTECH.COM



Western blotting analysis using anti-MRPL10 antibody (Cat#5057). Total cell lysates (30 μ g) from various cell lines were loaded and separated by SDS-PAGE. The blot was incubated with anti-MRPL10 antibody (Cat#5057, 1:2,500) and HRP-conjugated goat anti-mouse secondary antibody (Cat#101, 1:20,000) respectively. Image was developed using FeQ™ ECL Substrate Kit (Cat#226).

SUPPORT

SUPPORT@GENUINBIOTECH.COM
TEL: +1-540-855-7041

ORDERS

SALES@GENUINBIOTECH.COM
FAX: +1-540-855-7041

WWW.GENUINBIOTECH.COM