

**Catalog #: 5060**

## Aliases

DCP1B; Decapping mRNA 1B; mRNA-Decapping Enzyme 1B; FLJ31638; DCP1 Decapping Enzyme Homolog B (S. Cerevisiae); DCP1 Decapping Enzyme Homolog B; Decapping Enzyme HDcp1b; EC 3.6.1.62; DCP1

## Background

Gene Name: DCP1B

NCBI Gene Entry: [196513](#)

UniProt Entry: [Q8IZD4](#)

## Application Information

Molecular Weight: Predicted, 68 kDa; observed, 73 kDa

Clonality: Mouse monoclonal antibody

Clone ID: 24GB14090

Species Reactivity: Human

Applications Tested: Western blotting (WB), flow cytometry (FCM)

## Immunogen

Recombinant protein of human DCP1B

## Isotype

Mouse IgG1

## Storage Buffer

Supplied in PBS (pH 7.4) containing 50% glycerol, and 0.02% sodium azide.

## Storage

Store at -20 °C for one year.

## Recommended Dilutions

Western Blotting (WB): 1:500-1:2,500

Flow Cytometry (FCM): 1:2,000

**Note:** This product is for research use only.

## Validation Data

---

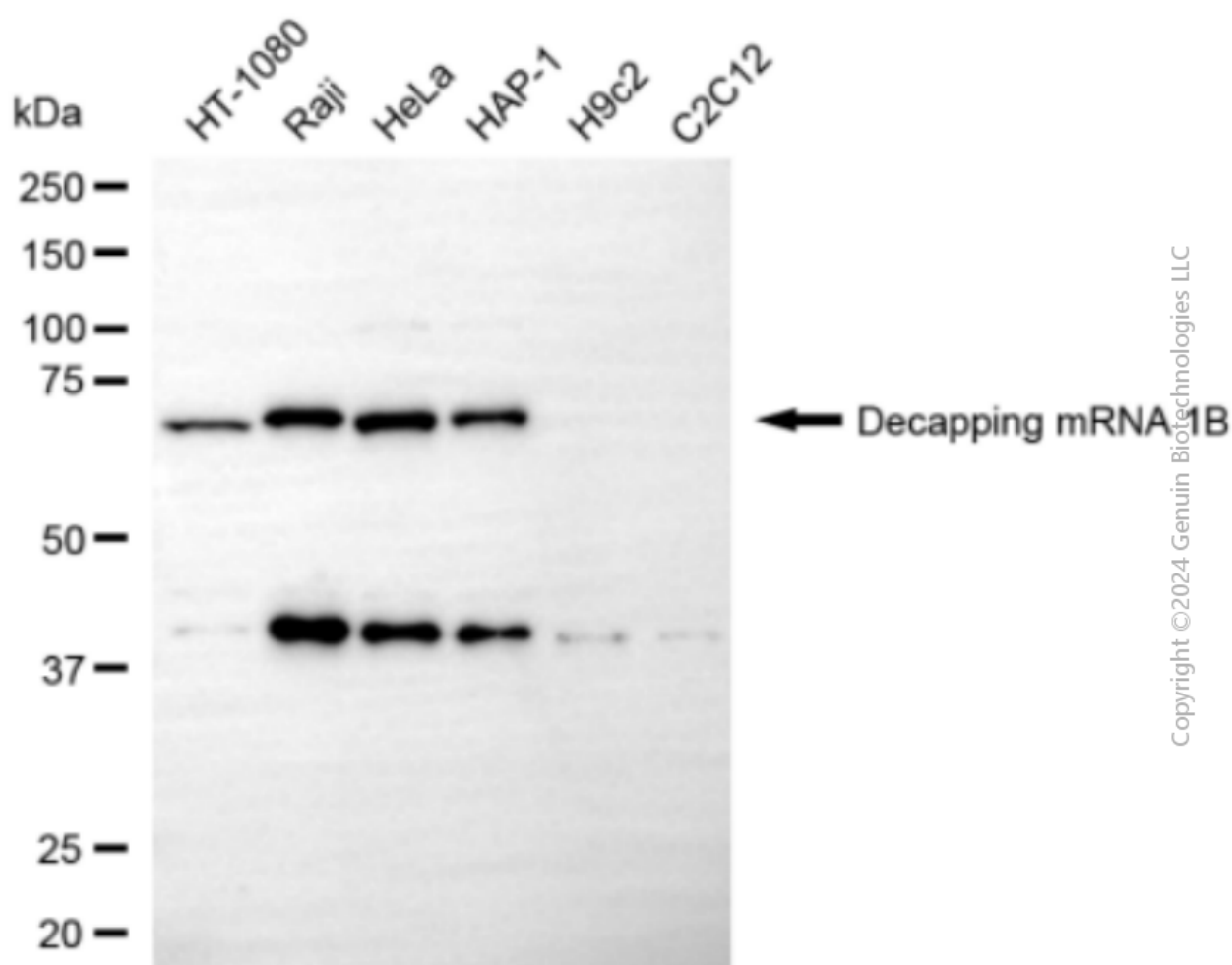
### SUPPORT

SUPPORT@GENUINBIOTECH.COM  
TEL: +1-540-855-7041

### ORDERS

SALES@GENUINBIOTECH.COM  
FAX: +1-540-855-7041

[WWW.GENUINBIOTECH.COM](http://WWW.GENUINBIOTECH.COM)



Western blotting analysis using anti-decapping mRNA 1B antibody (Cat#5060). Total cell lysates (30 µg) from various cell lines were loaded and separated by SDS-PAGE. The blot was incubated with anti-decapping mRNA 1B antibody (Cat#5060, 1:2,500) and HRP-conjugated goat anti-mouse secondary antibody (Cat#101, 1:20,000) respectively. Image was developed using FeQ™ ECL Substrate Kit (Cat#226).

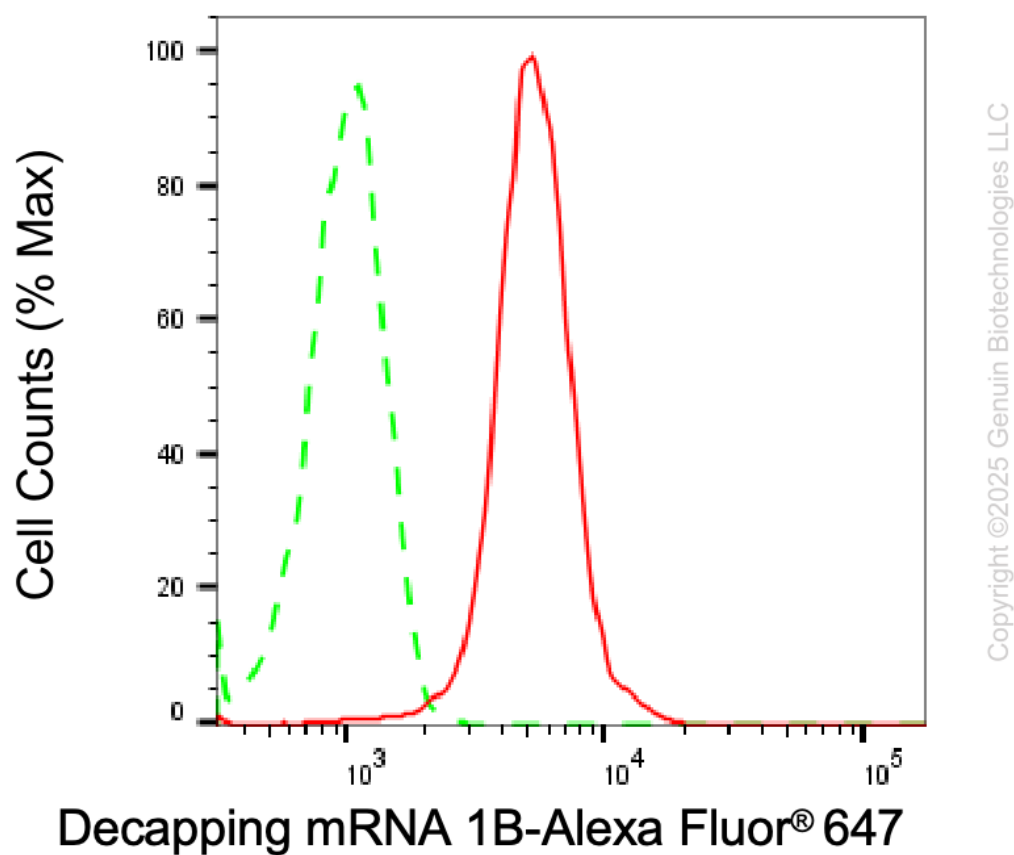
**SUPPORT**

SUPPORT@GENUINBIOTECH.COM  
TEL: +1-540-855-7041

**ORDERS**

SALES@GENUINBIOTECH.COM  
FAX: +1-540-855-7041

[WWW.GENUINBIOTECH.COM](http://WWW.GENUINBIOTECH.COM)



Flow cytometric analysis of Decapping mRNA 1B expression in HeLa cells using anti-Decapping mRNA 1B antibody (Cat#5060, 1:1,000). Green, isotype control; red, Decapping mRNA 1B.