

Catalog #: 50618

Aliases

RPS4; 40S ribosomal protein S2; 40S ribosomal protein S4; Protein LLRep3

Background

Gene Name: RPS2

NCBI Gene Entry: [6187](#)

UniProt Entry: [P15880](#)

Application Information

Molecular Weight: Predicted, 31 kDa; observed, 31 kDa

Clonality: Rabbit polyclonal antibody

Species Reactivity: Human, mouse, rat, bovine

Applications Tested: Western blotting (WB)

Immunogen

A synthesized peptide derived from human RPS2

Isotype

Rabbit IgG

Storage Buffer

Supplied in PBS (pH 7.3) containing 30% glycerol, and 0.01% sodium azide.

Storage

Store at -20 °C for one year.

Recommended Dilutions

Western Blotting (WB): 1:500-1:1,000

Note: This product is for research use only.

Validation Data

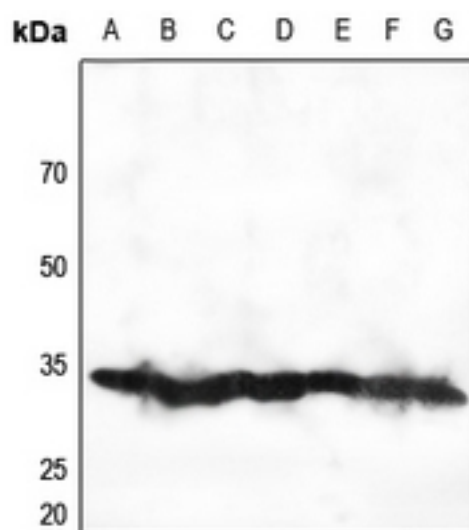
SUPPORT

SUPPORT@GENUINBIOTECH.COM
TEL: +1-540-855-7041

ORDERS

SALES@GENUINBIOTECH.COM
FAX: +1-540-855-7041

WWW.GENUINBIOTECH.COM



Western blotting analysis of RPS2 expression in HEK293T (A), Hela (B), H460 (C), mouse lung (D), mouse brain (E), mouse kidney (F), rat kidney (G) whole cell lysates.