

Catalog #: 50630

Aliases

NENA; Sodium channel protein type 9 subunit alpha; Neuroendocrine sodium channel; hNE-Na; Peripheral sodium channel 1; PN1; Sodium channel protein type IX subunit alpha; Voltage-gated sodium channel subunit alpha Nav1.7

Background

Gene Name: SCN9A

NCBI Gene Entry: [6335](#)

UniProt Entry: [Q15858](#)

Application Information

Molecular Weight: Predicted, 226 kDa; observed, 226 kDa

Clonality: Rabbit polyclonal antibody

Species Reactivity: Human, mouse, rat, monkey

Applications Tested: Western blotting (WB), immunohistochemistry (IHC)

Immunogen

A synthesized peptide derived from human Nav1.7

Isotype

Rabbit IgG

Storage Buffer

Supplied in PBS (pH 7.3) containing 30% glycerol, and 0.01% sodium azide.

Storage

Store at -20 °C for one year.

Recommended Dilutions

Western Blotting (WB): 1:500-1:1,000

Immunohistochemistry (IHC): 1:50-1:100

Note: This product is for research use only.

Validation Data

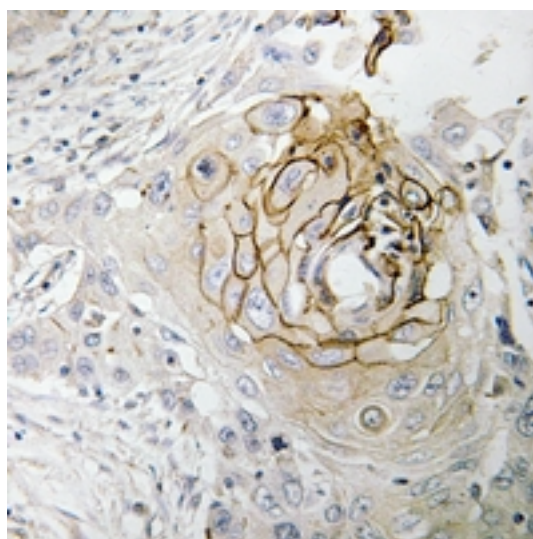
SUPPORT

SUPPORT@GENUINBIOTECH.COM
TEL: +1-540-855-7041

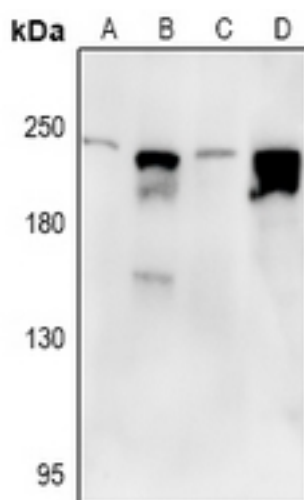
ORDERS

SALES@GENUINBIOTECH.COM
FAX: +1-540-855-7041

WWW.GENUINBIOTECH.COM



Immunohistochemical analysis of Nav1.7 staining in human lung cancer formalin fixed paraffin embedded tissue section. The section was pre-treated using heat mediated antigen retrieval with sodium citrate buffer (pH 6.0). The section was then incubated with the antibody at room temperature and detected using an HRP conjugated compact polymer system. DAB was used as the chromogen. The section was then counterstained with haematoxylin and mounted with DPX.



Western blotting analysis of Nav1.7 expression in mouse testis (A), rat testis (B), HCT116 (C), A549 (D) whole cell lysates.