

Catalog #: 5069

Aliases

HLA-DRB5; Major Histocompatibility Complex, Class II, DR Beta 5; MHC Class II Antigen DRB5; DR Beta-5; HLA Class II Histocompatibility Antigen, DR-5 Beta Chain; HLA Class II Histocompatibility Antigen, DR Beta 5 Chain; DR2-Beta-2; HLA-DRB5*; DRB5; Dw2

Background

Gene Name: HLA-DRB5

NCBI Gene Entry: [3127](#)

UniProt Entry: [Q30154](#)

Application Information

Molecular Weight: Predicted, 30 kDa; observed, 30 kDa

Clonality: Mouse monoclonal antibody

Clone ID: 24GB14135

Species Reactivity: Human

Applications Tested: Western blotting (WB)

Immunogen

Recombinant protein of human HLA DRB5

Isotype

Mouse IgG1

Storage Buffer

Supplied in PBS (pH 7.4) containing 50% glycerol, and 0.02% sodium azide.

Storage

Store at -20 °C for one year.

Recommended Dilutions

Western Blotting (WB): 1:200-1:1,000

Note: This product is for research use only.

Validation Data

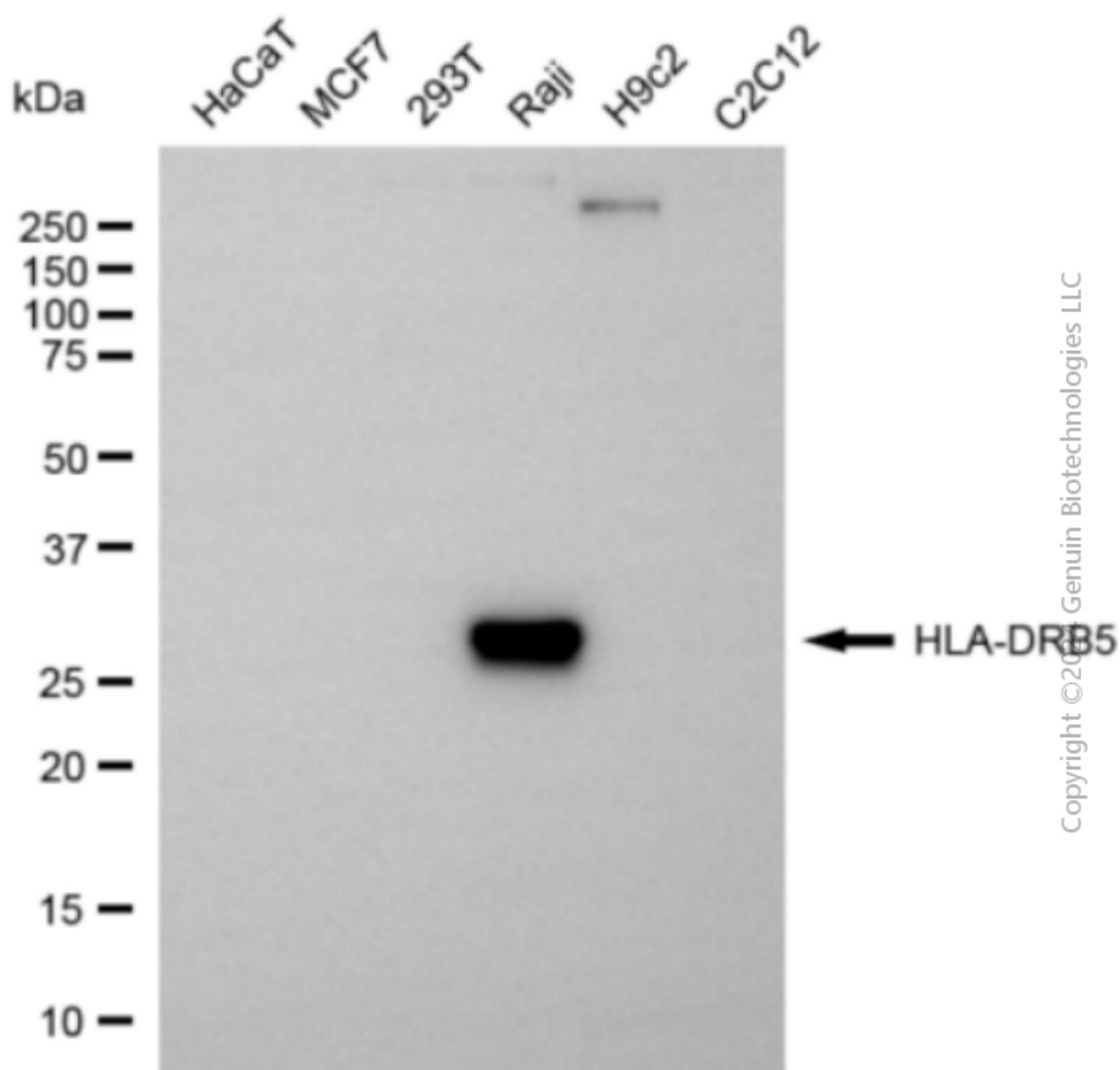
SUPPORT

SUPPORT@GENUINBIOTECH.COM
TEL: +1-540-855-7041

ORDERS

SALES@GENUINBIOTECH.COM
FAX: +1-540-855-7041

WWW.GENUINBIOTECH.COM



Copyright ©2008 Genuin Biotechnologies LLC

Western blotting analysis using anti-HLA-DRB5 antibody (Cat#5069). Total cell lysates (30 µg) from various cell lines were loaded and separated by SDS-PAGE. The blot was incubated with anti-HLA-DRB5 antibody (Cat#5069, 1:1,000) and HRP-conjugated goat anti-mouse secondary antibody (Cat#101, 1:20,000) respectively. Image was developed using FeQ™ ECL Substrate Kit (Cat#226).

SUPPORT

SUPPORT@GENUINBIOTECH.COM
TEL: +1-540-855-7041

ORDERS

SALES@GENUINBIOTECH.COM
FAX: +1-540-855-7041

WWW.GENUINBIOTECH.COM