

Anti-Topoisomerase 2 beta Rabbit Polyclonal Antibody



Catalog #: 50703

Aliases

DNA topoisomerase 2-beta; DNA topoisomerase II, beta isozyme

Background

Gene Name: TOP2B

NCBI Gene Entry: [7155](#)

UniProt Entry: [Q02880](#)

Application Information

Molecular Weight: Predicted, 183 kDa; observed, 183 kDa

Clonality: Rabbit polyclonal antibody

Species Reactivity: Human, mouse, dog, monkey, pig

Applications Tested: Western blotting (WB), immunohistochemistry (IHC), Chromatin

Immunoprecipitation (ChIP)

Immunogen

A synthesized peptide derived from human Topoisomerase 2 beta

Isotype

Rabbit IgG

Storage Buffer

Supplied in PBS (pH 7.3) containing 30% glycerol, and 0.01% sodium azide.

Storage

Store at -20 °C for one year.

Recommended Dilutions

Western Blotting (WB): 1:500-1:1,000

Immunohistochemistry (IHC): 1:50-1:100

Chromatin Immunoprecipitation (ChIP): 1:10-1:100

Note: This product is for research use only.

Validation Data

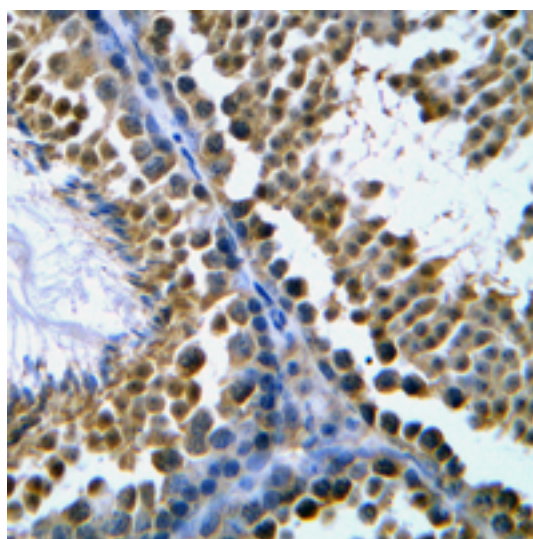
SUPPORT

SUPPORT@GENUINBIOTECH.COM
TEL: +1-540-855-7041

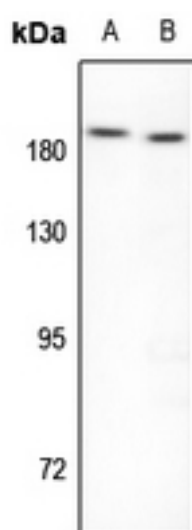
ORDERS

SALES@GENUINBIOTECH.COM
FAX: +1-540-855-7041

WWW.GENUINBIOTECH.COM



Immunohistochemical analysis of Topoisomerase 2 beta staining in human tonsil formalin fixed paraffin embedded tissue section. The section was pre-treated using heat mediated antigen retrieval with sodium citrate buffer (pH 6.0). The section was then incubated with the antibody at room temperature and detected using an HRP conjugated compact polymer system. DAB was used as the chromogen. The section was then counterstained with haematoxylin and mounted with DPX.



Western blotting analysis of Topoisomerase 2 beta expression in HEK293T (A), mouse testis (B) whole cell lysates.