

Catalog #: 5073

Aliases

KRT6A; Keratin 6A; KRT6D; CK6C; CK6D; K6C; K6D; Keratin, Type II Cytoskeletal 6A; Keratin 6A, Type II; ype-II Keratin Kb6; KRT6C; K6A; Keratin, Epidermal Type II, K6A; Keratin 6A, , Type II; Allergen Hom S 5; Cytokeratin 6A; Cytokeratin 6C; Cytokeratin 6D; Cytokeratin-6A; Cytokeratin-6D; Keratin 6C; Keratin 6D; Keratin-6A; CK-6C; CK-6E; CK-6A; CK-6D; CK6A; PC3

Background

Gene Name: KRT6A

NCBI Gene Entry: [3853](#)

UniProt Entry: [P02538](#)

Application Information

Molecular Weight: Predicted, 60 kDa; observed, 52 kDa

Clonality: Mouse monoclonal antibody

Clone ID: 24GB14180

Species Reactivity: Human

Applications Tested: Western blotting (WB), flow cytometry (FCM), immunocytochemistry (IC)

Immunogen

A synthesized peptide derived from human KRT6A

Isotype

Mouse IgG1

Storage Buffer

Supplied in PBS (pH 7.4) containing 50% glycerol, and 0.02% sodium azide.

Storage

Store at -20 °C for one year.

Recommended Dilutions

Western Blotting (WB): 1:400-1:2,000

Flow Cytometry (FCM): 1:2,000

Immunocytochemistry (IC): 1:100-1:1,000

SUPPORT

SUPPORT@GENUINBIOTECH.COM
TEL: +1-540-855-7041

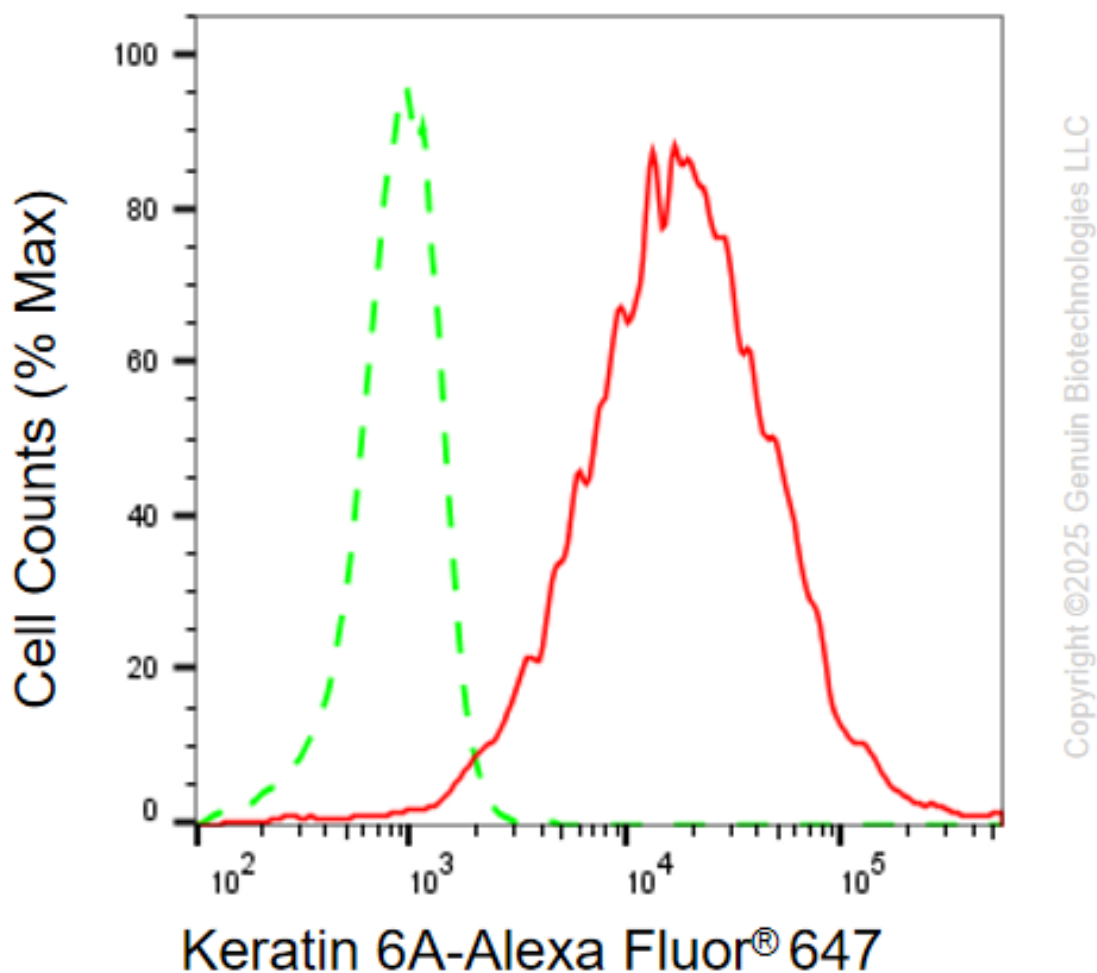
ORDERS

SALES@GENUINBIOTECH.COM
FAX: +1-540-855-7041

WWW.GENUINBIOTECH.COM

Note: This product is for research use only.

Validation Data



Flow cytometric analysis of Keratin 6A expression in HaCaT cells using anti-Keratin 6A antibody (Cat#5073, 1:2,000) . Green, isotype control; red, Keratin 6A.

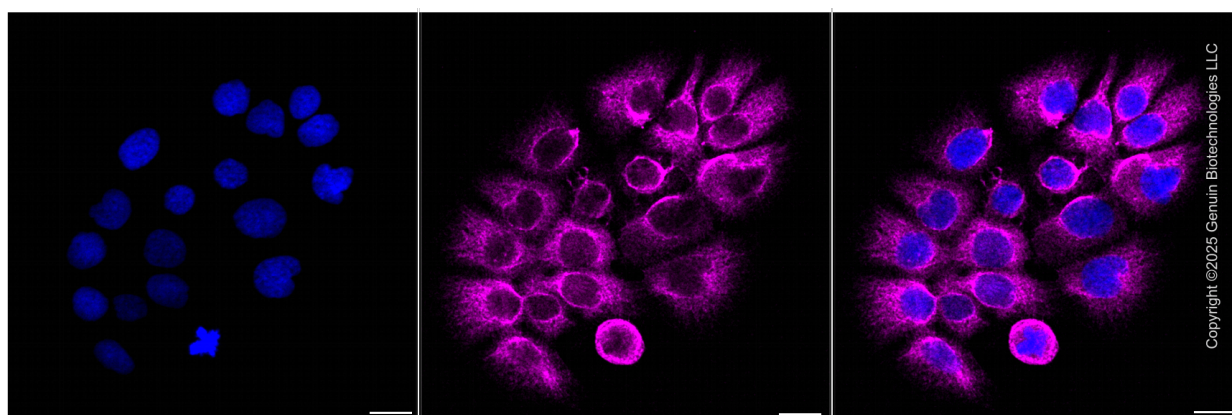
SUPPORT

SUPPORT@GENUINBIOTECH.COM
TEL: +1-540-855-7041

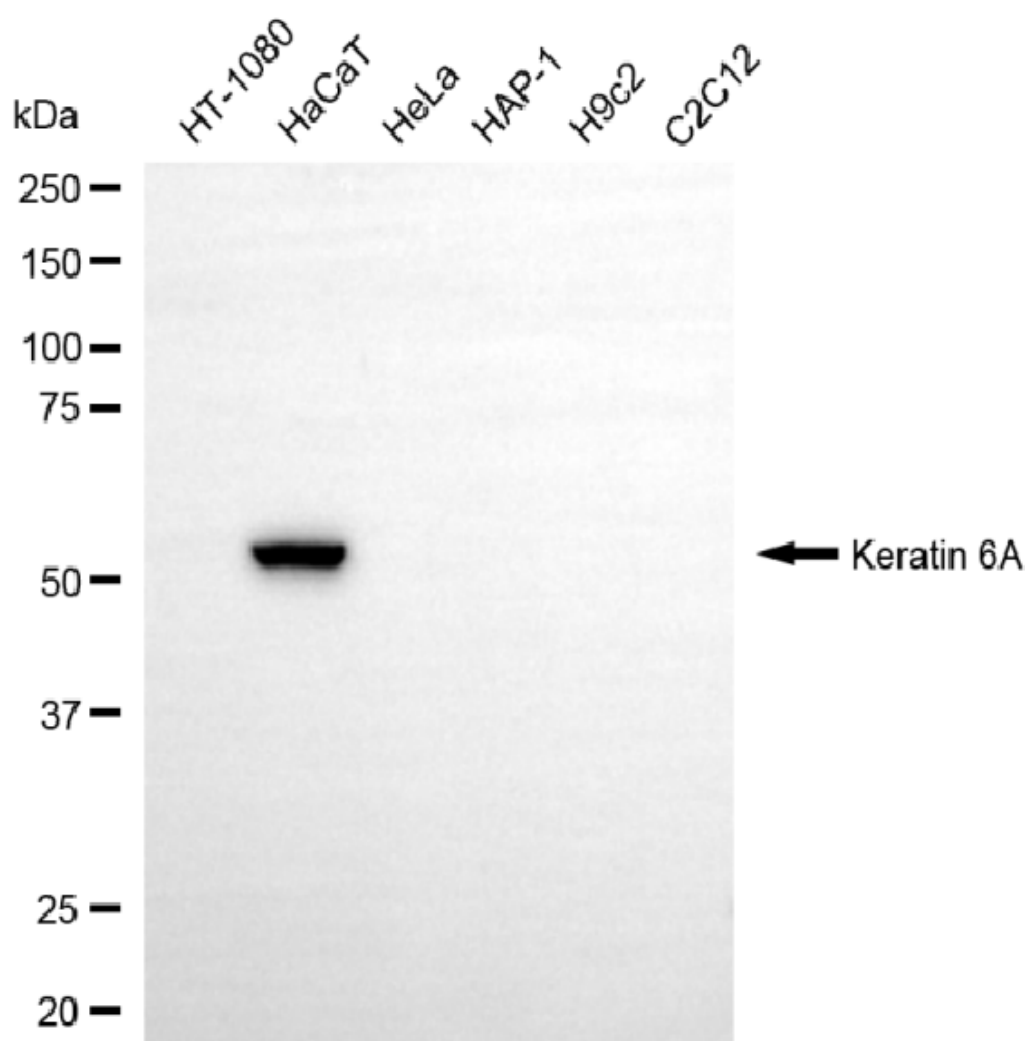
ORDERS

SALES@GENUINBIOTECH.COM
FAX: +1-540-855-7041

WWW.GENUINBIOTECH.COM



Immunocytochemical staining of HaCaT cells with anti-Keratin 6A antibody (Cat#5073, 1:1,000). Nuclei were stained blue with DAPI; Keratin 6A was stained magenta with Alexa Fluor® 647. Images were taken using Leica stellaris 5. Protein abundance based on laser Intensity and smart gain: Low. Scale bar, 20 μ m.



Western blotting analysis using anti-keratin 6A antibody (Cat#5073). Total cell lysates (30 μ g)

SUPPORT

SUPPORT@GENUINBIOTECH.COM
TEL: +1-540-855-7041

ORDERS

SALES@GENUINBIOTECH.COM
FAX: +1-540-855-7041

WWW.GENUINBIOTECH.COM

from various cell lines were loaded and separated by SDS-PAGE. The blot was incubated with anti-keratin 6A antibody (Cat#5073, 1:2,000) and HRP-conjugated goat anti-mouse secondary antibody (Cat#101, 1:20,000) respectively. Image was developed using FeQ™ ECL Substrate Kit (Cat#226).