

## Catalog #: 50753

### Aliases

KIAA0451; Serine/threonine-protein kinase MRCK alpha; CDC42-binding protein kinase alpha; DMPK-like alpha; Myotonic dystrophy kinase-related CDC42-binding kinase alpha; MRCK alpha; Myotonic dystrophy protein kinase-like alpha

### Background

Gene Name: CDC42BPA

NCBI Gene Entry: [8476](#)

UniProt Entry: [Q5VT25](#)

### Application Information

Molecular Weight: Predicted, 197 kDa; observed, 186 kDa

Clonality: Rabbit polyclonal antibody

Species Reactivity: Human, mouse, rat

Applications Tested: Western blotting (WB), immunocytochemistry (IC)

### Immunogen

A synthesized peptide derived from human MRCK alpha

### Isotype

Rabbit IgG

### Storage Buffer

Supplied in PBS (pH 7.3) containing 30% glycerol, and 0.01% sodium azide.

### Storage

Store at -20 °C for one year.

### Recommended Dilutions

Western Blotting (WB): 1:500-1:1,000

Immunocytochemistry (IC): 1:50-1:200

**Note:** This product is for research use only.

### Validation Data

---

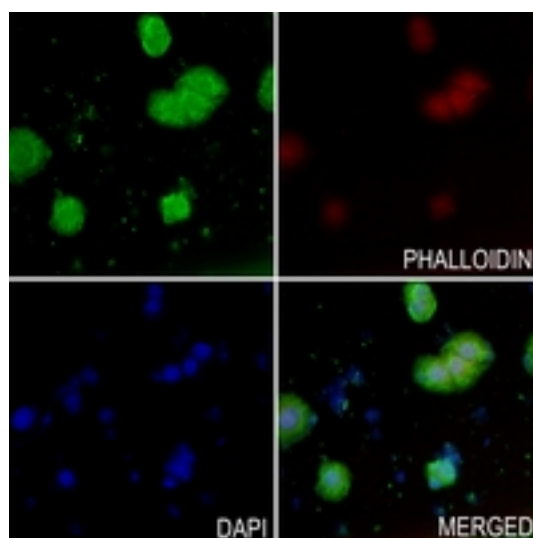
#### SUPPORT

SUPPORT@GENUINBIOTECH.COM  
TEL: +1-540-855-7041

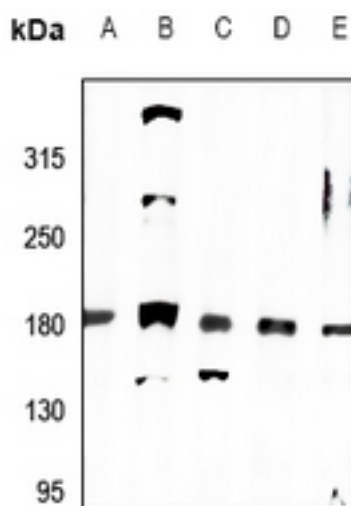
#### ORDERS

SALES@GENUINBIOTECH.COM  
FAX: +1-540-855-7041

[WWW.GENUINBIOTECH.COM](http://WWW.GENUINBIOTECH.COM)



Immunocytochemical analysis of MRCK alpha staining in HeLa cells. Formalin-fixed cells were permeabilized with 0.1% Triton X-100 in TBS for 5-10 minutes and blocked with 3% BSA-PBS for 30 minutes at room temperature. Cells were probed with the primary antibody in 3% BSA-PBS and incubated overnight at 4 °C in a humidified chamber. Cells were washed with PBST and incubated with a AF488-conjugated secondary antibody (green) in PBS at room temperature in the dark. Phalloidin - AF594 was used to stain Actin filaments (red). DAPI was used to stain the cell nuclei (blue).



Western blotting analysis of MRCK alpha expression in C6 (A), BV2 (B), HEK293T (C), Panc1 (D), U87MG (E) whole cell lysates.