

Anti-Topoisomerase 3 beta1 Rabbit Polyclonal Antibody



Catalog #: 50772

Aliases

TOP3B1; DNA topoisomerase 3-beta-1; DNA topoisomerase III beta-1

Background

Gene Name: TOP3B

NCBI Gene Entry: [8940](#)

UniProt Entry: [O95985](#)

Application Information

Molecular Weight: Predicted, 96 kDa; observed, 115 kDa

Clonality: Rabbit polyclonal antibody

Species Reactivity: Human, mouse, rat, bovine, dog, pig

Applications Tested: Western blotting (WB), immunohistochemistry (IHC)

Immunogen

A synthesized peptide derived from human Topoisomerase 3 beta1

Isotype

Rabbit IgG

Storage Buffer

Supplied in PBS (pH 7.3) containing 30% glycerol, and 0.01% sodium azide.

Storage

Store at -20 °C for one year.

Recommended Dilutions

Western Blotting (WB): 1:500-1:1,000

Immunohistochemistry (IHC): 1:50-1:100

Note: This product is for research use only.

Validation Data

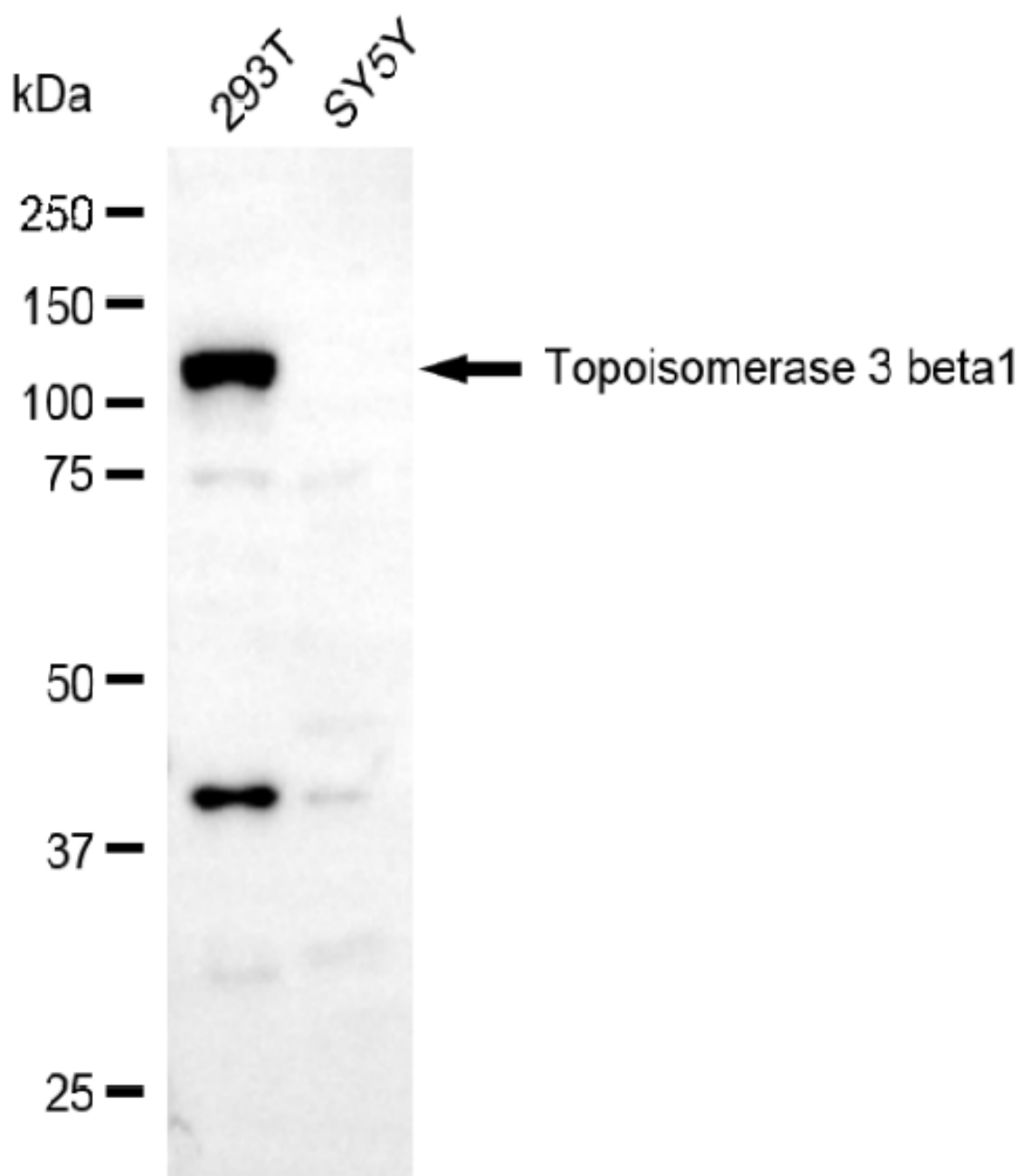
SUPPORT

SUPPORT@GENUINBIOTECH.COM
TEL: +1-540-855-7041

ORDERS

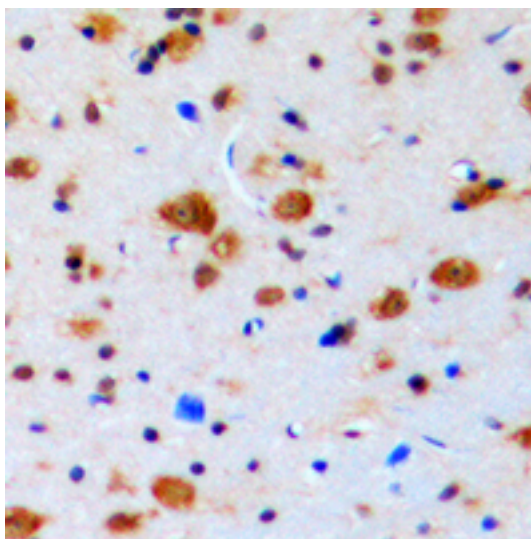
SALES@GENUINBIOTECH.COM
FAX: +1-540-855-7041

WWW.GENUINBIOTECH.COM



Copyright ©2025 Genuin Biotechnologies LLC

Western blotting analysis using anti-Topoisomerase 3 beta1 antibody (Cat#50772). Total lysates (30 µg) were loaded and separated by SDS-PAGE. The blot was incubated with anti-Topoisomerase 3 beta1 antibody (Cat#50772, 1:2,500) and HRP-conjugated goat anti-rabbit secondary antibody (Cat#201, 1:20,000) respectively. Image was developed using FeQ™ ECL Substrate Kit (Cat#226).



Immunohistochemical analysis of Topoisomerase 3 beta1 staining in human brain formalin fixed paraffin embedded tissue section. The section was pre-treated using heat mediated antigen retrieval with sodium citrate buffer (pH 6.0). The section was then incubated with the antibody at room temperature and detected using an HRP conjugated compact polymer system. DAB was used as the chromogen. The section was then counterstained with haematoxylin and mounted with DPX.