

Catalog #: 5091

Aliases

LAT2; Linker For Activation Of T Cells Family Member 2; NTAL; AB; Linker For Activation Of T-Cells Family Member 2 HSPC046; WBSCR15; WBSCR5; WSCR5; Linker For Activation Of T Cells, Transmembrane Adaptor 2; Williams-Beuren Syndrome Chromosomal Region 15 Protein; Williams-Beuren Syndrome Chromosomal Region 5 Protein; Membrane-Associated Adapter Molecule; Linker For Activation Of B-Cells; Non-T-Cell Activation Linker; Linker For Activation Of T Cells Family, Member 2; Williams-Beuren Syndrome Chromosome Region 5; Linker For Activation Of B Cells; Non-T Cell Activation Linker; WBS15

Background

Gene Name: LAT2

NCBI Gene Entry: [7462](#)

UniProt Entry: [Q9GZY6](#)

Application Information

Molecular Weight: Predicted, 27 kDa; observed, 25 kDa

Clonality: Mouse monoclonal antibody

Clone ID: 24GB14270

Species Reactivity: Human

Applications Tested: Western blotting (WB), flow cytometry (FCM)

Immunogen

Recombinant protein of human LAT2

Isotype

Mouse IgG2b

Storage Buffer

Supplied in PBS (pH 7.4) containing 50% glycerol, and 0.02% sodium azide.

Storage

Store at -20 °C for one year.

Recommended Dilutions

Western Blotting (WB): 1:400-1:2,000

Flow Cytometry (FCM): 1:2,000

SUPPORT

SUPPORT@GENUINBIOTECH.COM
TEL: +1-540-855-7041

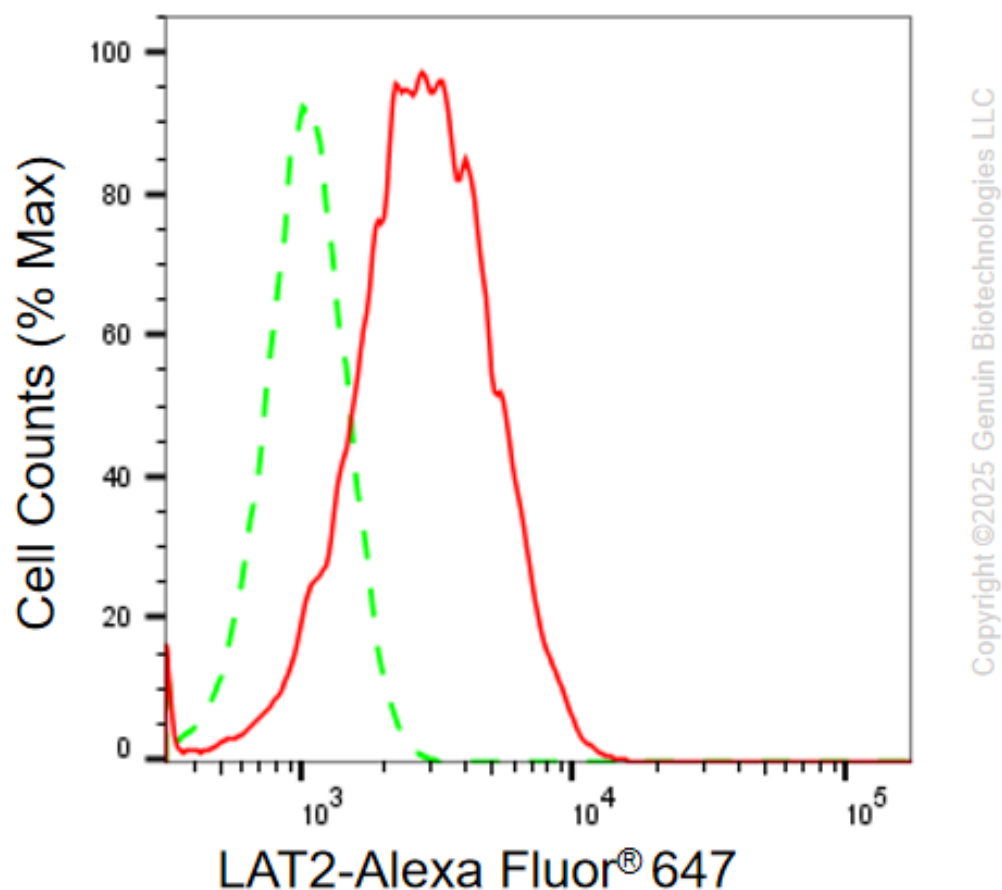
ORDERS

SALES@GENUINBIOTECH.COM
FAX: +1-540-855-7041

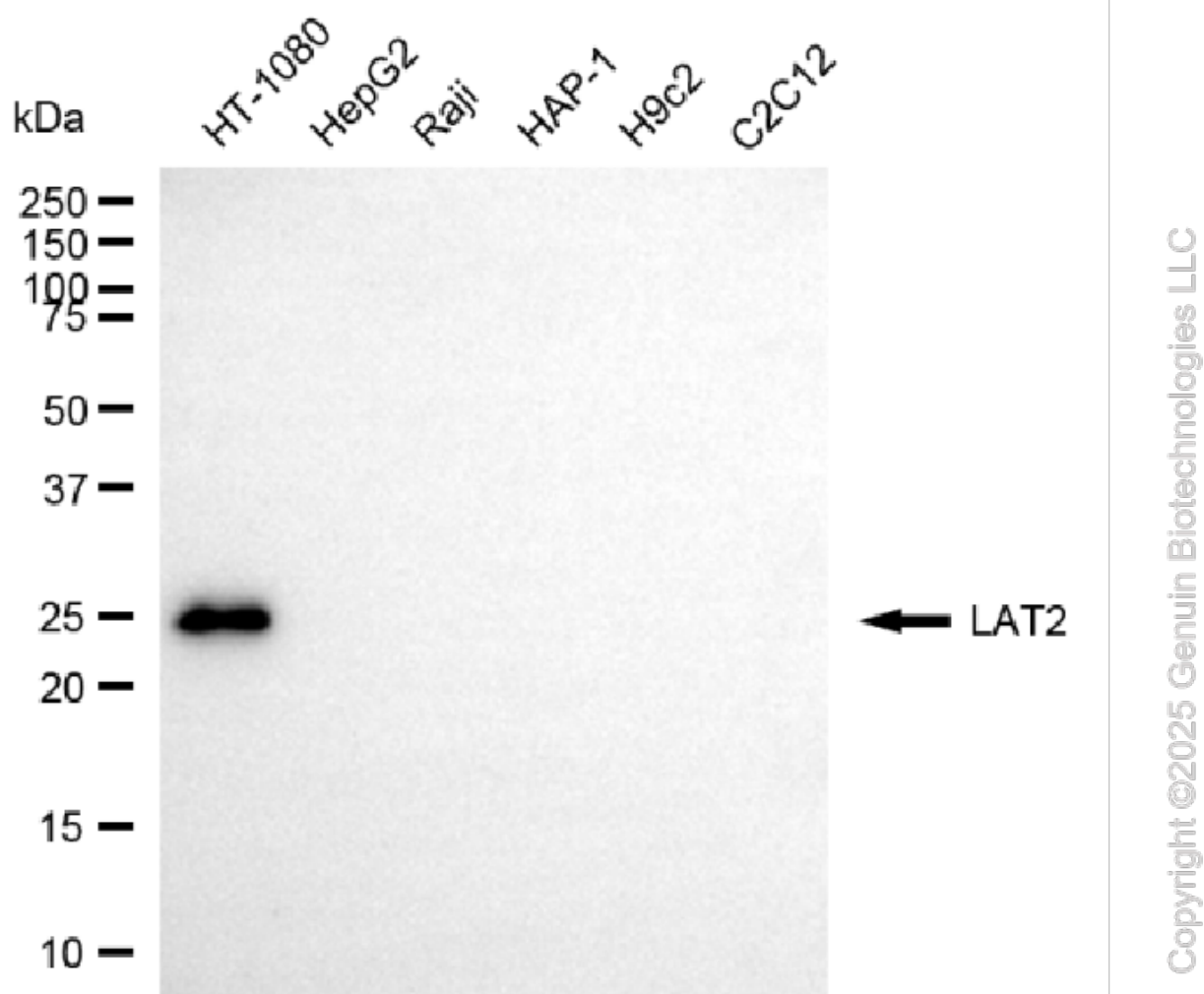
WWW.GENUINBIOTECH.COM

Note: This product is for research use only.

Validation Data



Flow cytometric analysis of LAT2 expression in HT-1080 cells using anti-LAT2 antibody (Cat#5091, 1:2,000) . Green, isotype control; red, LAT2.



Western blotting analysis using anti-LAT2 antibody (Cat#5091). Total cell lysates (30 µg) from various cell lines were loaded and separated by SDS-PAGE. The blot was incubated with anti-LAT2 antibody (Cat#5091, 1:2,000) and HRP-conjugated goat anti-mouse secondary antibody (Cat#101, 1:20,000) respectively. Image was developed using NaQ™ ECL Substrate Kit (Cat#716).

SUPPORT

SUPPORT@GENUINBIOTECH.COM
TEL: +1-540-855-7041

ORDERS

SALES@GENUINBIOTECH.COM
FAX: +1-540-855-7041

WWW.GENUINBIOTECH.COM