

**Catalog #: 50990**

## Aliases

Phosphatidylinositol-glycan biosynthesis class W protein; PIG-W

## Background

Gene Name: PIGW

NCBI Gene Entry: [284098](#)

UniProt Entry: [Q7Z7B1](#)

## Application Information

Molecular Weight: Predicted, 56 kDa; observed, 65 kDa

Clonality: Rabbit polyclonal antibody

Species Reactivity: Human, mouse, rat

Applications Tested: Western blotting (WB)

## Immunogen

A synthesized peptide derived from human PIGW

## Isotype

Rabbit IgG

## Storage Buffer

Supplied in PBS (pH 7.3) containing 30% glycerol, and 0.01% sodium azide.

## Storage

Store at -20 °C for one year.

## Recommended Dilutions

Western Blotting (WB): 1:500-1:1,000

**Note:** This product is for research use only.

## Validation Data

---

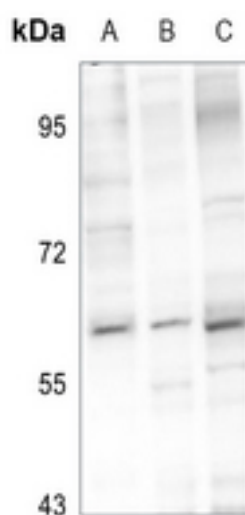
### SUPPORT

SUPPORT@GENUINBIOTECH.COM  
TEL: +1-540-855-7041

### ORDERS

SALES@GENUINBIOTECH.COM  
FAX: +1-540-855-7041

[WWW.GENUINBIOTECH.COM](http://WWW.GENUINBIOTECH.COM)



Western blotting analysis of PIGW expression in U87MG (A), AML12 (B), PC12 (C) whole cell lysates.