

## Catalog #: 5101

## Aliases

NSMCE1; NSE1 Homolog, SMC5-SMC6 Complex Component; NSE1; Non-Structural Maintenance Of Chromosomes Element 1 Homolog; Non-SMC Element 1 Homolog; Non-SMC Element 1 Homolog (S. Cerevisiae); EC 2.3.2.27

## Background

Gene Name: NSMCE1

NCBI Gene Entry: [197370](#)

UniProt Entry: [Q8WV22](#)

## Application Information

Molecular Weight: Predicted, 31 kDa; observed, 29 kDa

Clonality: Mouse monoclonal antibody

Clone ID: 24GB14320

Species Reactivity: Human, mouse, rat

Applications Tested: Western blotting (WB), immunocytochemistry (IC)

## Immunogen

Recombinant protein of human NSMCE1

## Isotype

Mouse IgG1

## Storage Buffer

Supplied in PBS (pH 7.4) containing 50% glycerol, and 0.02% sodium azide.

## Storage

Store at -20 °C for one year.

## Recommended Dilutions

Western Blotting (WB): 1:400-1:2,000

Immunocytochemistry (IC): 1:100-1:1,000

**Note:** This product is for research use only.

## Validation Data

---

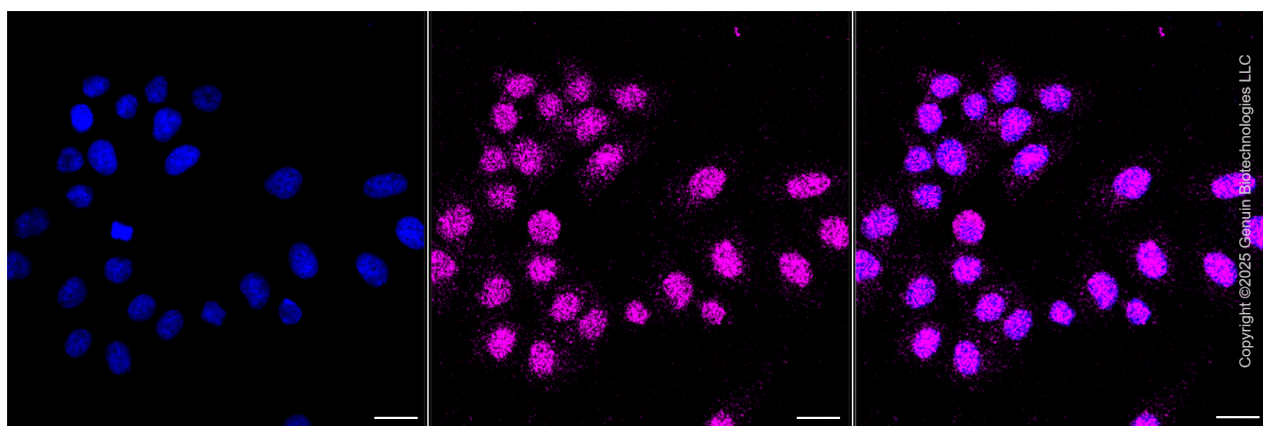
### SUPPORT

SUPPORT@GENUINBIOTECH.COM  
TEL: +1-540-855-7041

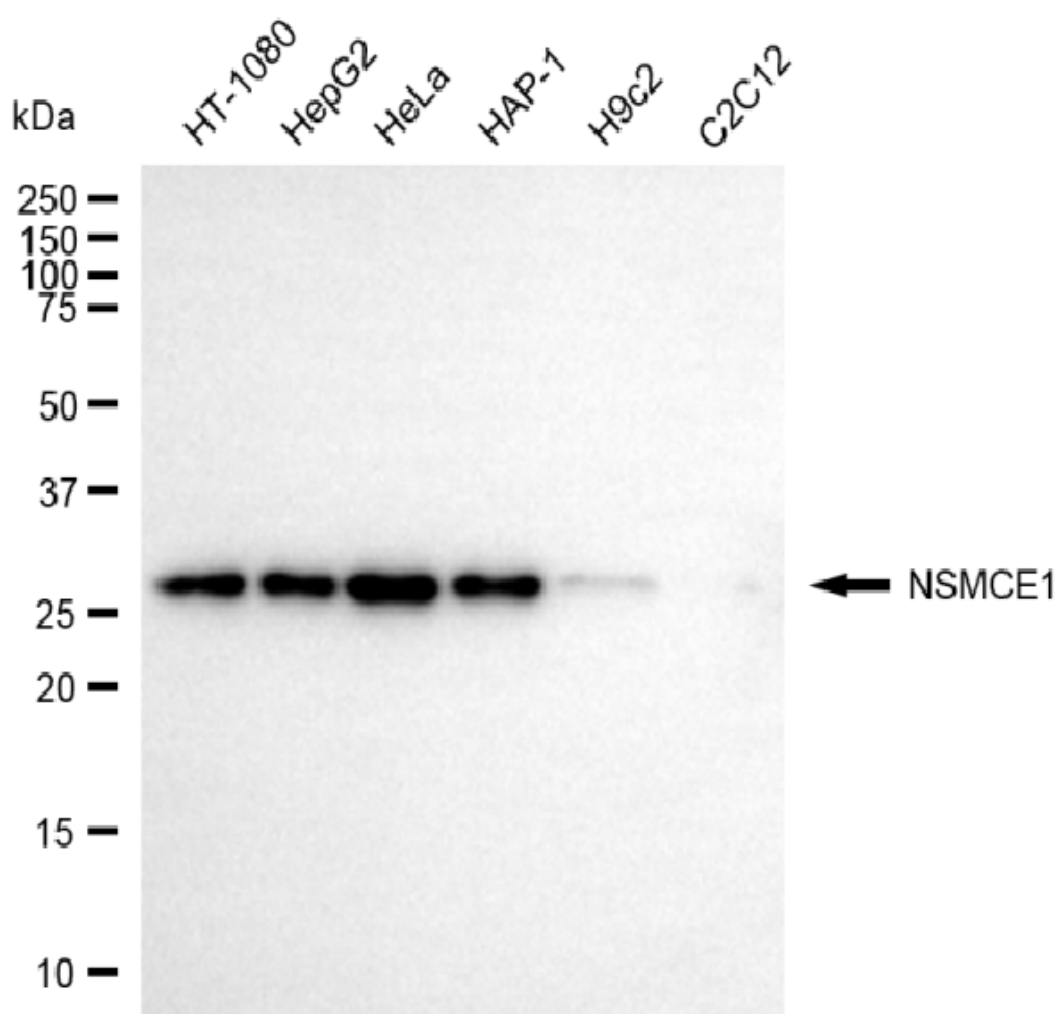
### ORDERS

SALES@GENUINBIOTECH.COM  
FAX: +1-540-855-7041

[WWW.GENUINBIOTECH.COM](http://WWW.GENUINBIOTECH.COM)



Immunocytochemical staining of HepG2 cells with anti-NSMCE1 antibody (Cat#5101, 1:1,000) . Nuclei were stained blue with DAPI; NSMCE1 was stained magenta with Alexa Fluor® 647. Images were taken using Leica stellaris 5. Protein abundance based on laser Intensity and smart gain: Low. Scale bar, 20  $\mu$ m.



Western blotting analysis using anti-NSMCE1 antibody (Cat#5101). Total cell lysates (30  $\mu$ g)

**SUPPORT**

SUPPORT@GENUINBIOTECH.COM  
TEL: +1-540-855-7041

**ORDERS**

SALES@GENUINBIOTECH.COM  
FAX: +1-540-855-7041

[WWW.GENUINBIOTECH.COM](http://WWW.GENUINBIOTECH.COM)

from various cell lines were loaded and separated by SDS-PAGE. The blot was incubated with anti-NSMCE1 antibody (Cat#5101, 1:2,000) and HRP-conjugated goat anti-mouse secondary antibody (Cat#101, 1:20,000) respectively. Image was developed using NaQ™ ECL Substrate Kit (Cat#716).