

Catalog #: 51024

Aliases

ATP8; ATPASE8; MTATP8; ATP synthase protein 8; A6L; F-ATPase subunit 8

Background

Gene Name: MT-ATP8

NCBI Gene Entry: [4509](#)

UniProt Entry: [P03928](#)

Application Information

Molecular Weight: Predicted, 7 kDa; observed, 10 kDa

Clonality: Rabbit polyclonal antibody

Species Reactivity: Human, mouse, rat

Applications Tested: Western blotting (WB)

Immunogen

A synthesized peptide derived from human ATP8

Isotype

Rabbit IgG

Storage Buffer

Supplied in PBS (pH 7.3) containing 30% glycerol, and 0.01% sodium azide.

Storage

Store at -20 °C for one year.

Recommended Dilutions

Western Blotting (WB): 1:500-1:1,000

Note: This product is for research use only.

Validation Data

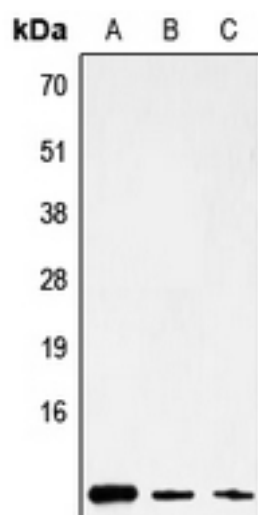
SUPPORT

SUPPORT@GENUINBIOTECH.COM
TEL: +1-540-855-7041

ORDERS

SALES@GENUINBIOTECH.COM
FAX: +1-540-855-7041

WWW.GENUINBIOTECH.COM



Western blotting analysis of ATP8 expression in HepG2 (A), mouse brain (B), rat stomach (C) whole cell lysates.