

Catalog #: 51031

Aliases

REPA1; RPA70; Replication protein A 70 kDa DNA-binding subunit; RP-A p70; Replication factor A protein 1; RF-A protein 1; Single-stranded DNA-binding protein

Background

Gene Name: RPA1

NCBI Gene Entry: [6117](#)

UniProt Entry: [P27694](#)

Application Information

Molecular Weight: Predicted, 68 kDa; observed, 68 kDa

Clonality: Rabbit polyclonal antibody

Species Reactivity: Human, mouse, rat

Applications Tested: Western blotting (WB)

Immunogen

A synthesized peptide derived from human RPA1

Isotype

Rabbit IgG

Storage Buffer

Supplied in PBS (pH 7.3) containing 30% glycerol, and 0.01% sodium azide.

Storage

Store at -20 °C for one year.

Recommended Dilutions

Western Blotting (WB): 1:500-1:1,000

Note: This product is for research use only.

Validation Data

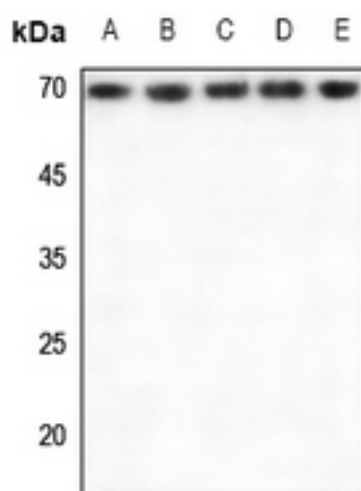
SUPPORT

SUPPORT@GENUINBIOTECH.COM
TEL: +1-540-855-7041

ORDERS

SALES@GENUINBIOTECH.COM
FAX: +1-540-855-7041

WWW.GENUINBIOTECH.COM



Western blotting analysis of RPA1 expression in HEK293T (A), Hela (B), HGC27 (C), mouse kidney (D), mouse testis (E) whole cell lysates.