

Catalog #: 51034

Aliases

SLUG; SLUGH; Zinc finger protein SNAI2; Neural crest transcription factor Slug; Protein snail homolog 2

Background

NCBI Gene Entry: [6591](#)

UniProt Entry: [O43623](#)

Application Information

Molecular Weight: Predicted, 29 kDa; observed, 35 kDa

Clonality: Rabbit polyclonal antibody

Clone ID: N/A

Species Reactivity: Human, mouse, rat, bovine, pig, sheep

Applications Tested: Western blotting (WB)

Immunogen

A synthesized peptide derived from human SLUG

Isotype

Rabbit IgG

Storage Buffer

Supplied in PBS (pH 7.4) containing 50% glycerol, and 0.02% sodium azide.

Storage

Store at -20 °C for one year.

Recommended Dilutions

Western Blotting (WB): 1:500-1:1,000

Note: This product is for research use only.

Validation Data

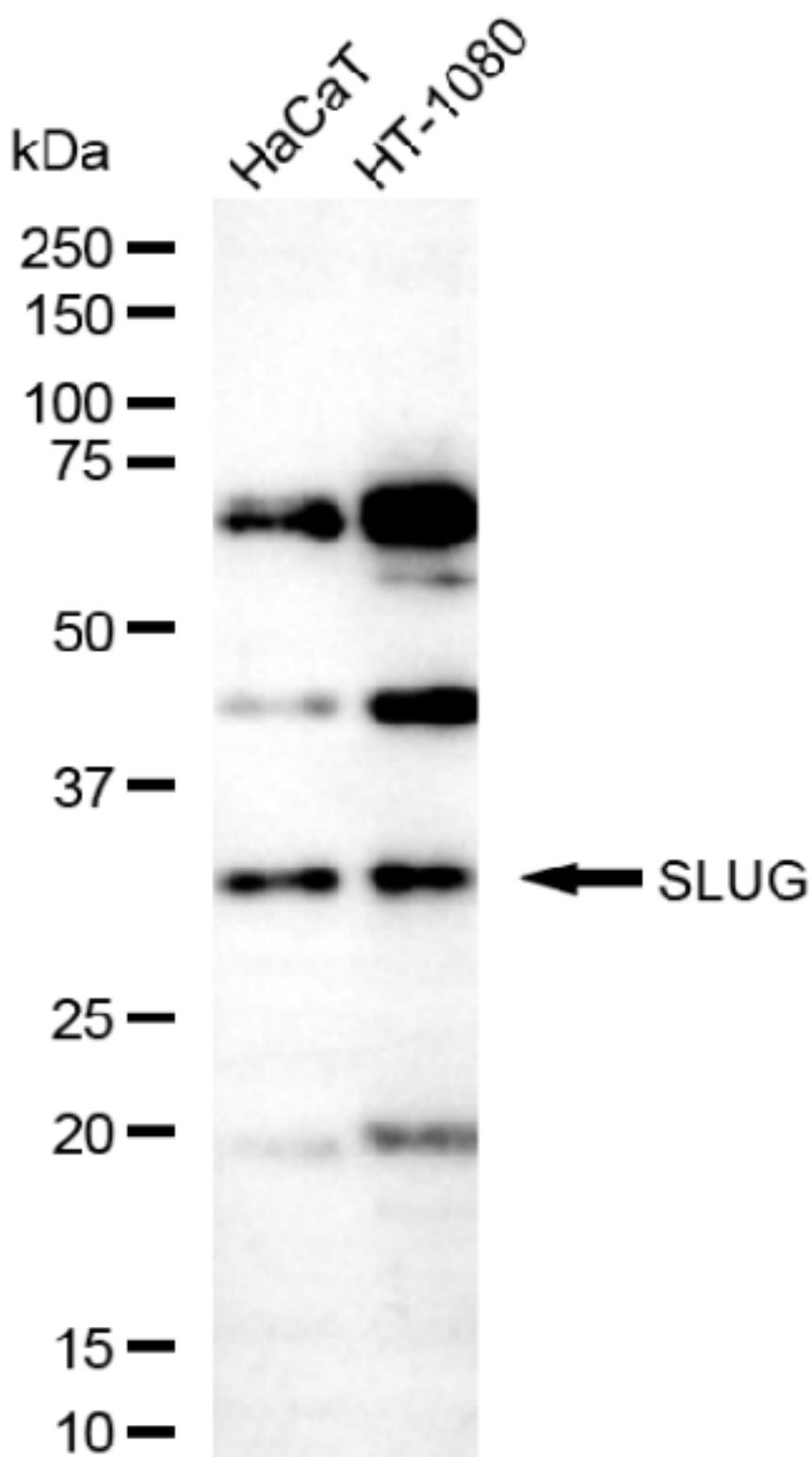
SUPPORT

SUPPORT@GENUINBIOTECH.COM
TEL: +1-540-855-7041

ORDERS

SALES@GENUINBIOTECH.COM
FAX: +1-540-855-7041

WWW.GENUINBIOTECH.COM



Copyright ©2025 Genuin Biotechnologies LLC

Western blotting analysis using anti-SLUG antibody (Cat#51034). Total lysates (30 μ g) were loaded and separated by SDS-PAGE. The blot was incubated with anti-SLUG antibody (Cat#51034, 1:2,000) and HRP-conjugated goat anti-rabbit secondary antibody (Cat#201,

SUPPORT

SUPPORT@GENUINBIOTECH.COM
TEL: +1-540-855-7041

ORDERS

SALES@GENUINBIOTECH.COM
FAX: +1-540-855-7041

WWW.GENUINBIOTECH.COM

1:20,000) respectively. Image was developed using FeQ™ ECL Substrate Kit (Cat#226).