

## Catalog #: 5104

## Aliases

PSMD1; Proteasome 26S Subunit, Non-ATPase 1; P112; Rpn2; S1; Proteasome (Prosome, Macropain) 26S Subunit, Non-ATPase, 1; 26S Proteasome Non-ATPase Regulatory Subunit 1; 26S Proteasome Regulatory Subunit RPN2; 26S Proteasome Regulatory Subunit S1; 26S Proteasome Subunit P112

## Background

Gene Name: PSMD1

NCBI Gene Entry: [5707](#)

UniProt Entry: [Q99460](#)

## Application Information

Molecular Weight: Predicted, 106 kDa; observed, 106 kDa

Clonality: Mouse monoclonal antibody

Clone ID: 24GB14335

Species Reactivity: Human, mouse, rat

Applications Tested: Western blotting (WB), flow cytometry (FCM), immunocytochemistry (IC)

## Immunogen

Recombinant protein of human PSMD1

## Isotype

Mouse IgG2b

## Storage Buffer

Supplied in PBS (pH 7.4) containing 50% glycerol, and 0.02% sodium azide.

## Storage

Store at -20 °C for one year.

## Recommended Dilutions

Western Blotting (WB): 1:400-1:2,000

Flow Cytometry (FCM): 1:1,000

Immunocytochemistry (IC): 1:100-1:1,000

---

### SUPPORT

SUPPORT@GENUINBIOTECH.COM  
TEL: +1-540-855-7041

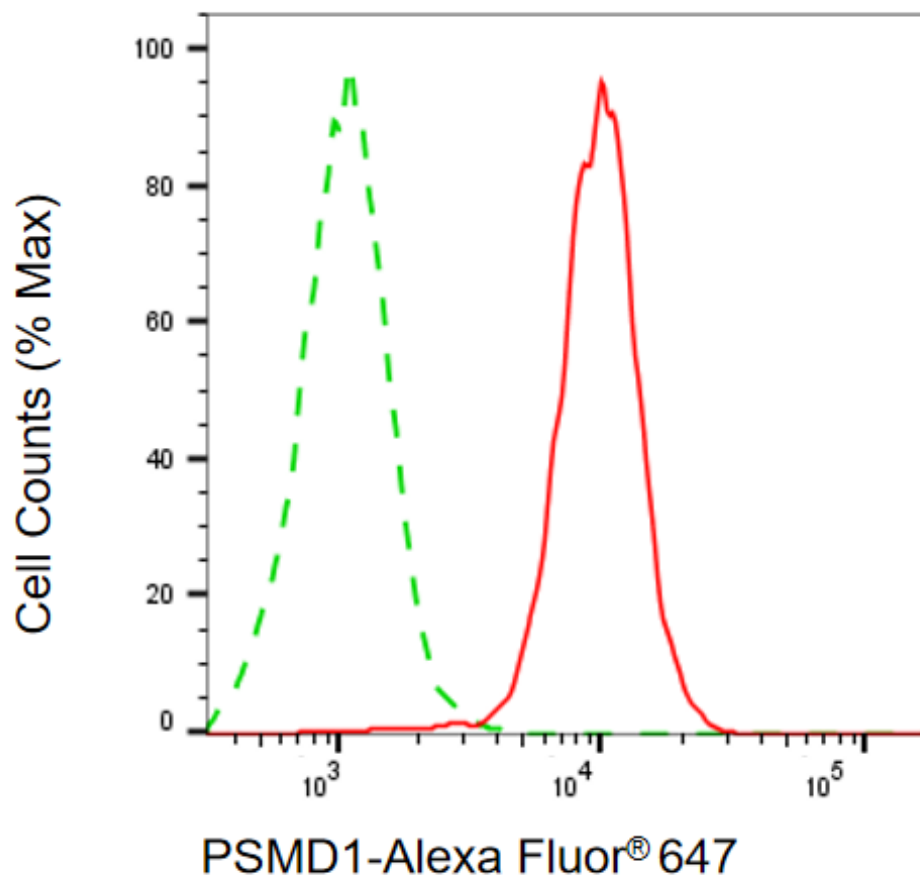
### ORDERS

SALES@GENUINBIOTECH.COM  
FAX: +1-540-855-7041

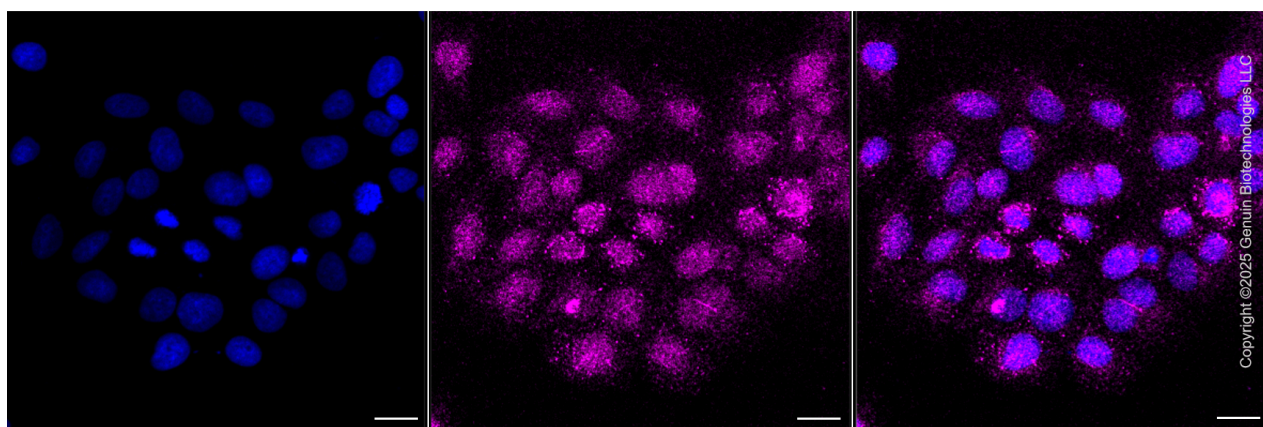
[WWW.GENUINBIOTECH.COM](http://WWW.GENUINBIOTECH.COM)

**Note:** This product is for research use only.

## Validation Data



Flow cytometric analysis of PSMD1 expression in HepG2 cells using anti-PSMD1 antibody (Cat#5104, 1:1,000) . Green, isotype control; red, PSMD1.



Immunocytochemical staining of HepG2 cells with anti-PSMD1 antibody (Cat#5104, 1:1,000) . Nuclei were stained blue with DAPI; PSMD1 was stained magenta with Alexa Fluor® 647.

### SUPPORT

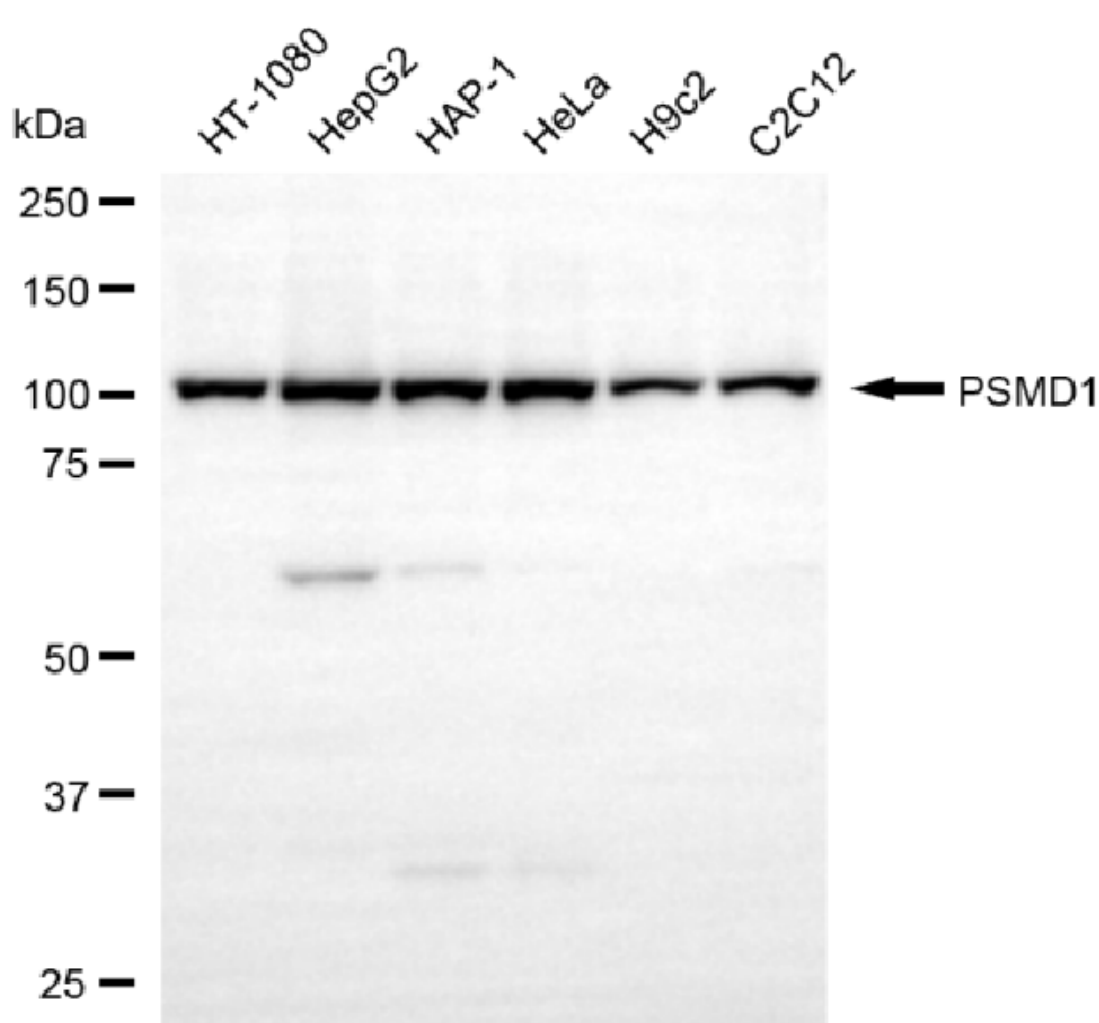
SUPPORT@GENUINBIOTECH.COM  
TEL: +1-540-855-7041

### ORDERS

SALES@GENUINBIOTECH.COM  
FAX: +1-540-855-7041

[WWW.GENUINBIOTECH.COM](http://WWW.GENUINBIOTECH.COM)

Images were taken using Leica stellaris 5. Protein abundance based on laser Intensity and smart gain: Low. Scale bar, 20  $\mu$ m.



Western blotting analysis using anti-PSMD1 antibody (Cat#5104). Total cell lysates (30  $\mu$ g) from various cell lines were loaded and separated by SDS-PAGE. The blot was incubated with anti-PSMD1 antibody (Cat#5104, 1:2,000) and HRP-conjugated goat anti-mouse secondary antibody (Cat#101, 1:20,000) respectively. Image was developed using FeQ™ ECL Substrate Kit (Cat#226).