

## Catalog #: 51049

### Aliases

KIAA0606; PHLPP; PLEKHE1; SCOP; PH domain leucine-rich repeat-containing protein phosphatase 1; Pleckstrin homology domain-containing family E member 1; PH domain-containing family E member 1; Suprachiasmatic nucleus circadian oscillatory protein; hSCOP

### Background

Gene Name: PHLPP1

NCBI Gene Entry: [23239](#)

UniProt Entry: [O60346](#)

### Application Information

Molecular Weight: Predicted, 184 kDa; observed, 140 kDa

Clonality: Rabbit polyclonal antibody

Species Reactivity: Human, mouse, rat

Applications Tested: Western blotting (WB)

### Immunogen

A synthesized peptide derived from human PHLPP

### Isotype

Rabbit IgG

### Storage Buffer

Supplied in PBS (pH 7.3) containing 30% glycerol, and 0.01% sodium azide.

### Storage

Store at -20 °C for one year.

### Recommended Dilutions

Western Blotting (WB): 1:500-1:1,000

**Note:** This product is for research use only.

### Validation Data

---

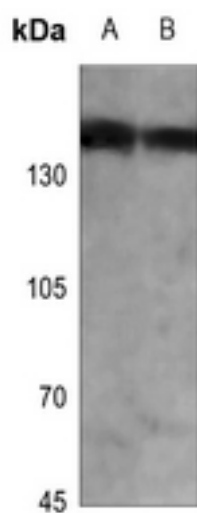
#### SUPPORT

SUPPORT@GENUINBIOTECH.COM  
TEL: +1-540-855-7041

#### ORDERS

SALES@GENUINBIOTECH.COM  
FAX: +1-540-855-7041

[WWW.GENUINBIOTECH.COM](http://WWW.GENUINBIOTECH.COM)



Western blotting analysis of PHLPP expression in mouse liver (A), rat liver (B) whole cell lysates.