

## Catalog #: 5107

## Aliases

SSB; Small RNA Binding Exonuclease Protection Factor La; Lupus La Protein; La Autoantigen; La/SSB; LARP3; La; La Ribonucleoprotein Domain Family, Member 3; Sjogren Syndrome Type B Antigen; Sjogren Syndrome Antigen B; SS-B; Sjogren Syndrome Antigen B (Autoantigen La); La Ribonucleoprotein; upus La Antigen; SS-B/La Protein; Autoantigen La

## Background

Gene Name: SSB

NCBI Gene Entry: [6741](#)

UniProt Entry: [P05455](#)

## Application Information

Molecular Weight: Predicted, 47 kDa; observed, 49 kDa

Clonality: Mouse monoclonal antibody

Clone ID: 24GB14350

Species Reactivity: Human

Applications Tested: Western blotting (WB), flow cytometry (FCM), immunocytochemistry (IC)

## Immunogen

Recombinant protein of human SSB

## Isotype

Mouse IgG1

## Storage Buffer

Supplied in PBS (pH 7.4) containing 50% glycerol, and 0.02% sodium azide.

## Storage

Store at -20 °C for one year.

## Recommended Dilutions

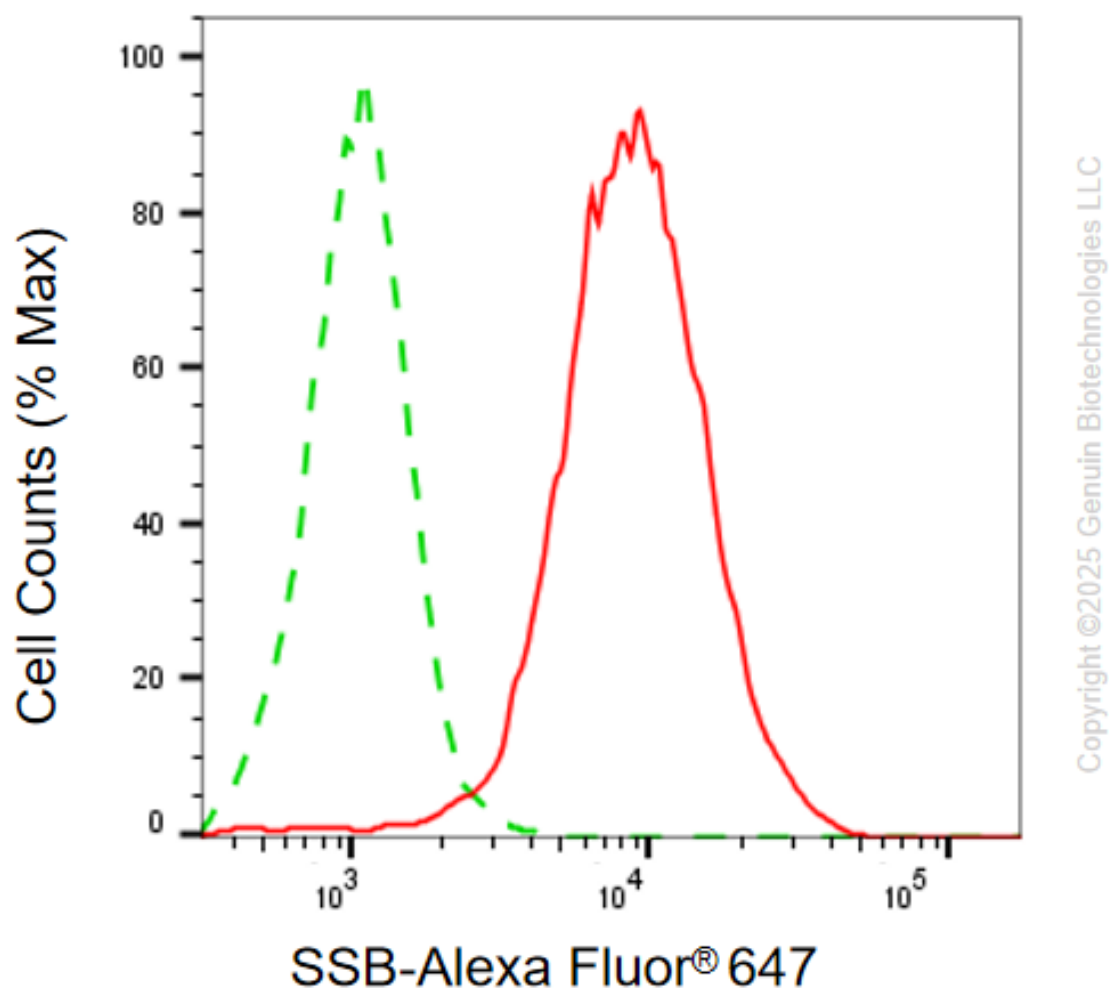
Western Blotting (WB): 1:400-1:2,000

Flow Cytometry (FCM): 1:1,000

Immunocytochemistry (IC): 1:100-1:1,000

**Note:** This product is for research use only.

## Validation Data



Flow cytometric analysis of SSB expression in HepG2 cells using anti-SSB antibody (Cat#5107, 1:1,000) . Green, isotype control; red, SSB.

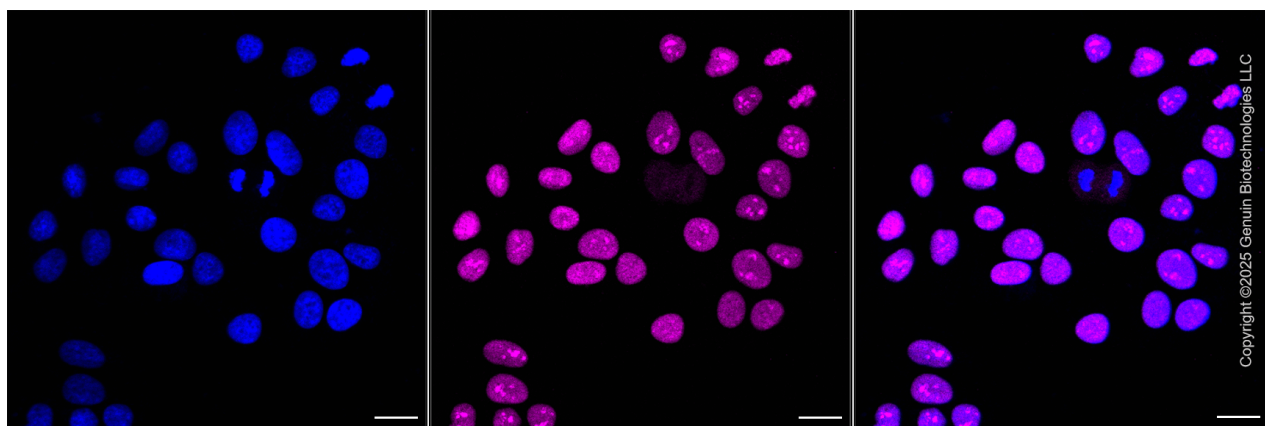
### SUPPORT

SUPPORT@GENUINBIOTECH.COM  
TEL: +1-540-855-7041

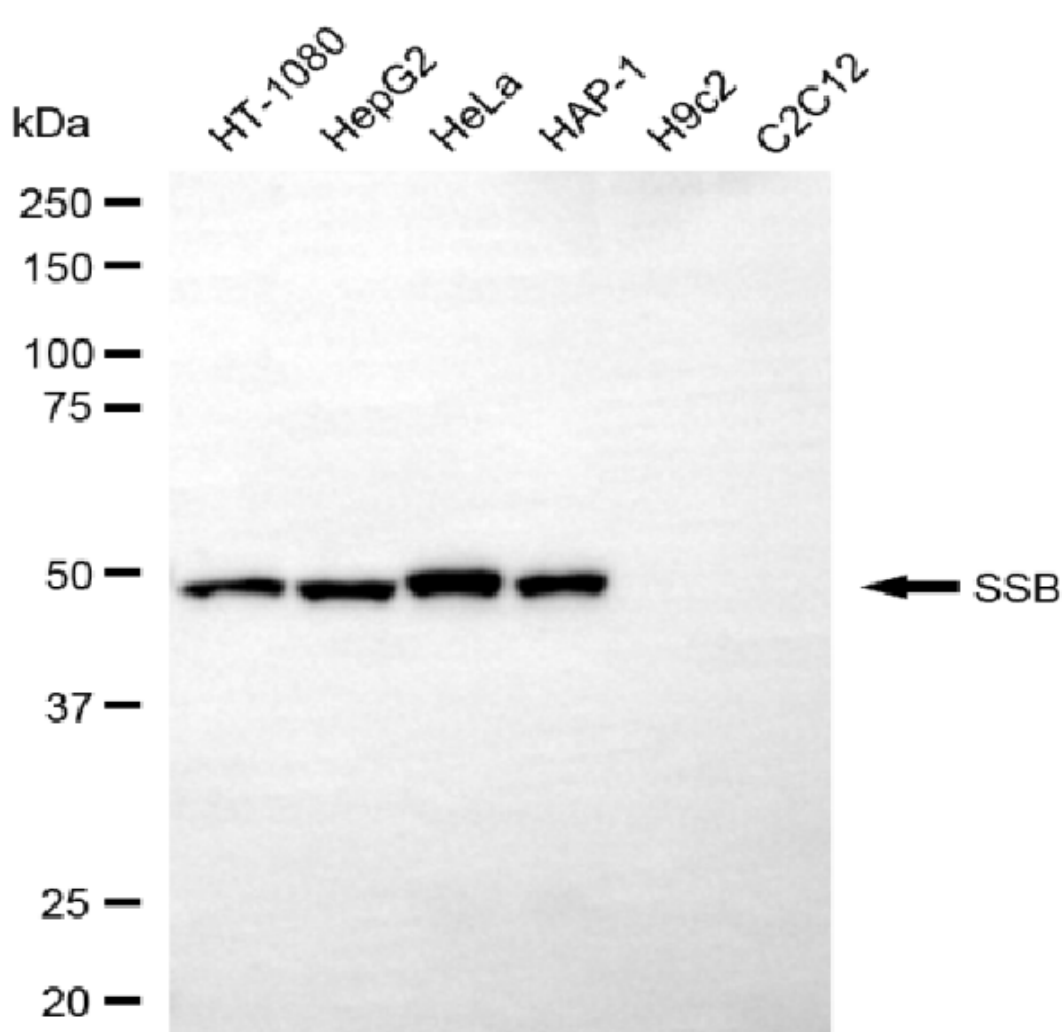
### ORDERS

SALES@GENUINBIOTECH.COM  
FAX: +1-540-855-7041

[WWW.GENUINBIOTECH.COM](http://WWW.GENUINBIOTECH.COM)



Immunocytochemical staining of HepG2 cells with anti-SSB antibody (Cat#5107, 1:1,000) . Nuclei were stained blue with DAPI; SSB was stained magenta with Alexa Fluor® 647. Images were taken using Leica stellaris 5. Protein abundance based on laser Intensity and smart gain: High. Scale bar, 20  $\mu$ m.



Western blotting analysis using anti-SSB antibody (Cat#5107). Total cell lysates (30  $\mu$ g) from

**SUPPORT**

SUPPORT@GENUINBIOTECH.COM  
TEL: +1-540-855-7041

**ORDERS**

SALES@GENUINBIOTECH.COM  
FAX: +1-540-855-7041

[WWW.GENUINBIOTECH.COM](http://WWW.GENUINBIOTECH.COM)

various cell lines were loaded and separated by SDS-PAGE. The blot was incubated with anti-SSB antibody (Cat#5107, 1:2,000) and HRP-conjugated goat anti-mouse secondary antibody (Cat#101, 1:20,000) respectively. Image was developed using FeQ™ ECL Substrate Kit (Cat#226).