

Catalog #: 5114

Aliases

IGHA2; Immunoglobulin Heavy Constant Alpha 2 (A2m Marker); Constant Region Of Heavy Chain Of IgA2; Immunoglobulin Heavy Constant Alpha 2; Immunoglobulin Alpha 2 (A2M Marker); Ig Alpha-2 Chain C Region BUT; Ig Alpha-2 Chain C Region LAN; Ig Alpha-2 Chain C Region; A2M

Background

Gene Name: IGHA2

NCBI Gene Entry: [3494](#)

UniProt Entry: [P01877](#)

Application Information

Molecular Weight: Predicted, 42 kDa; observed, 42 kDa

Clonality: Mouse monoclonal antibody

Clone ID: 24GB14385

Species Reactivity: Human, rat

Applications Tested: Western blotting (WB)

Immunogen

Recombinant protein of human IgA2

Isotype

Mouse IgG1

Storage Buffer

Supplied in PBS (pH 7.4) containing 50% glycerol, and 0.02% sodium azide.

Storage

Store at -20 °C for one year.

Recommended Dilutions

Western Blotting (WB): 1:400-1:2,000

Note: This product is for research use only.

Validation Data

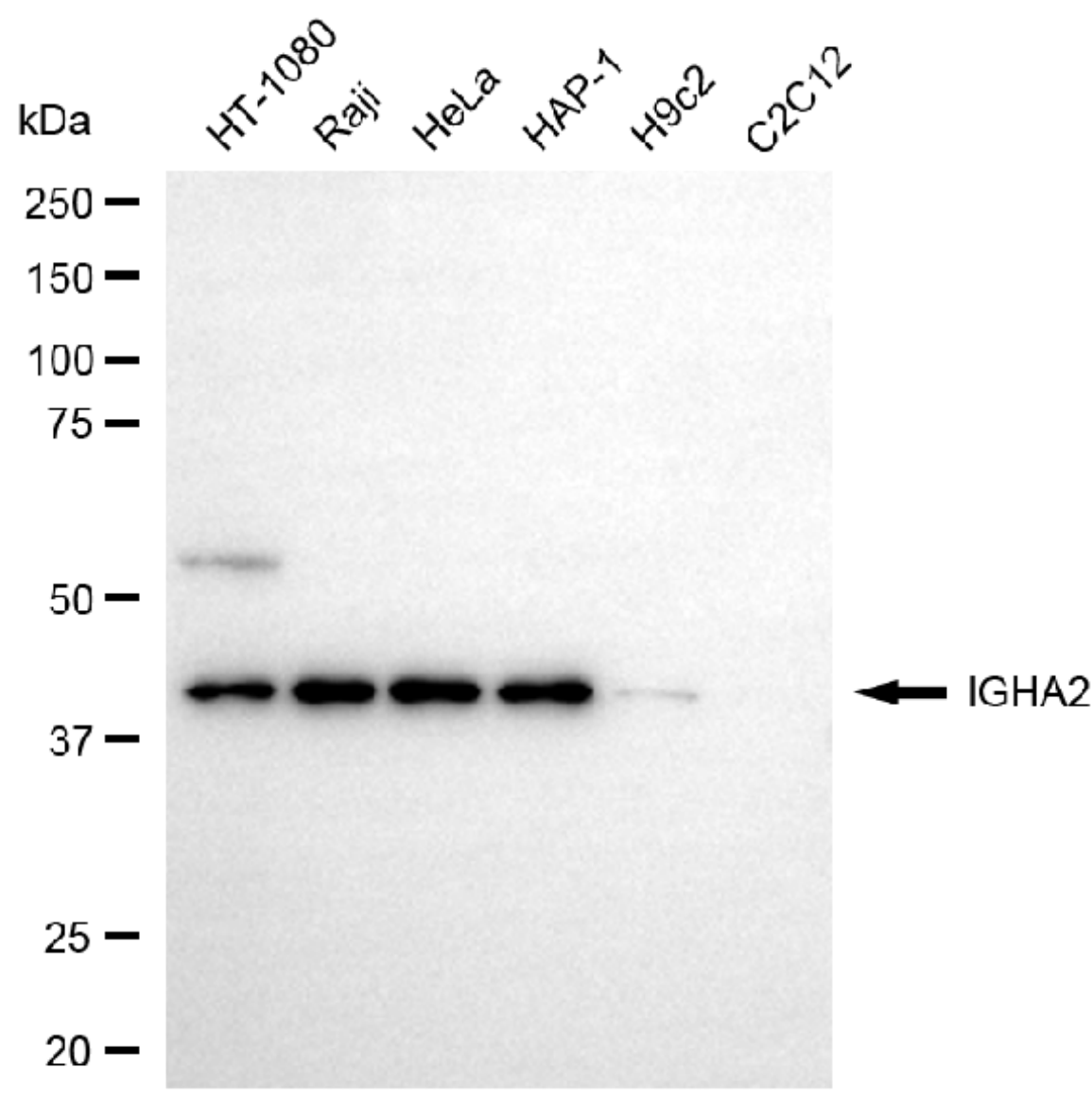
SUPPORT

SUPPORT@GENUINBIOTECH.COM
TEL: +1-540-855-7041

ORDERS

SALES@GENUINBIOTECH.COM
FAX: +1-540-855-7041

WWW.GENUINBIOTECH.COM



Copyright ©2025 Genuin Biotechnologies LLC

Western blotting analysis using anti-IGHA2 antibody (Cat#5114). Total cell lysates (30 µg) from various cell lines were loaded and separated by SDS-PAGE. The blot was incubated with anti-IGHA2 antibody (Cat#5114, 1:2,000) and HRP-conjugated goat anti-mouse secondary antibody (Cat#101, 1:20,000) respectively. Image was developed using NaQ™ ECL Substrate Kit (Cat#716).

SUPPORT

SUPPORT@GENUINBIOTECH.COM
TEL: +1-540-855-7041

ORDERS

SALES@GENUINBIOTECH.COM
FAX:+1-540-855-7041

WWW.GENUINBIOTECH.COM