

Catalog #: 5121

Aliases

WWP1; WW Domain Containing E3 Ubiquitin Protein Ligase 1; AIP5; NEDD4-Like E3 Ubiquitin-Protein Ligase WWP1; HECT-Type E3 Ubiquitin Transferase WWP1; TGIF-Interacting Ubiquitin Ligase 1; WW Domain-Containing Protein 1; DKFZP434D2111; Tiul1; Nedd-4-Like Ubiquitin-Protein Ligase; Atrophin-1 Interacting Protein 5; Atrophin-1-Interacting Protein 5; EC 2.3.2.26; EC 6.3.2; HSDRP1

Background

Gene Name: WWP1

NCBI Gene Entry: [11059](#)

UniProt Entry: [Q9H0M0](#)

Application Information

Molecular Weight: Predicted, 105 kDa; observed, 125 kDa

Clonality: Mouse monoclonal antibody

Clone ID: 24GB15804

Species Reactivity: Human

Applications Tested: Western blotting (WB), flow cytometry (FCM)

Immunogen

Recombinant protein of human WWP1

Isotype

Mouse IgG1

Storage Buffer

Supplied in PBS (pH 7.4) containing 50% glycerol, and 0.02% sodium azide.

Storage

Store at -20 °C for one year.

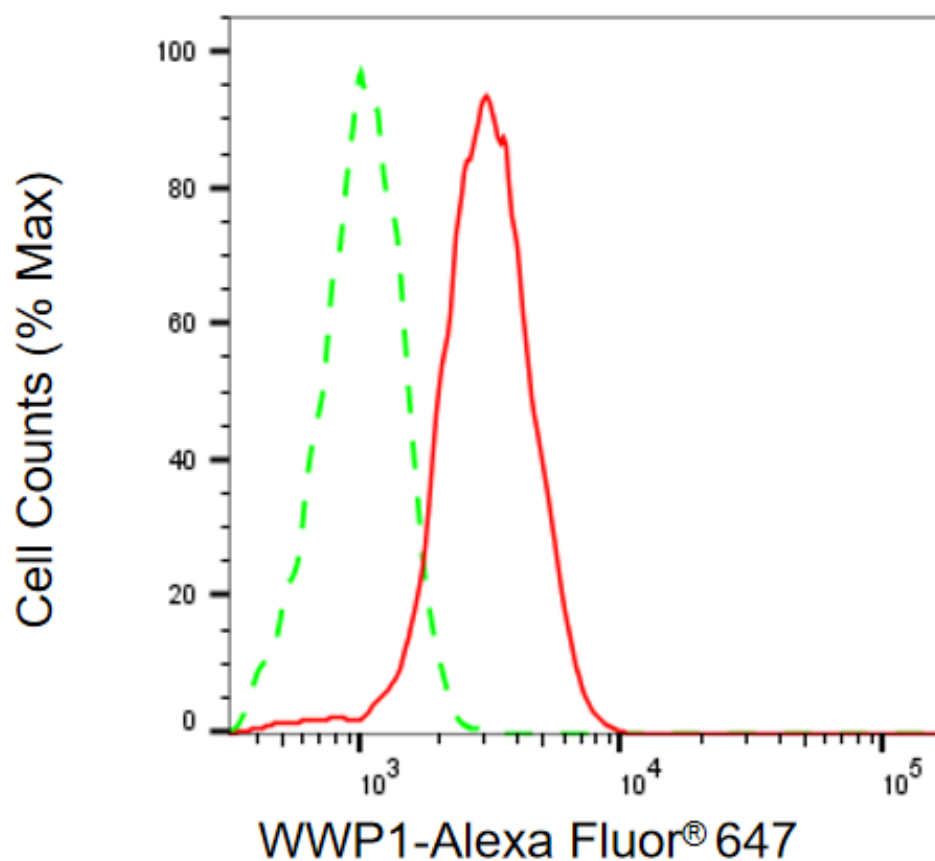
Recommended Dilutions

Western Blotting (WB): 1:400-1:2,000

Flow Cytometry (FCM): 1:2,000

Note: This product is for research use only.

Validation Data



Copyright ©2025 Genuin Biotechnologies LLC

Flow cytometric analysis of WWP1 expression in HepG2 cells using anti-WWP1 antibody (Cat#5121, 1:2,000). Green, isotype control; red, WWP1.

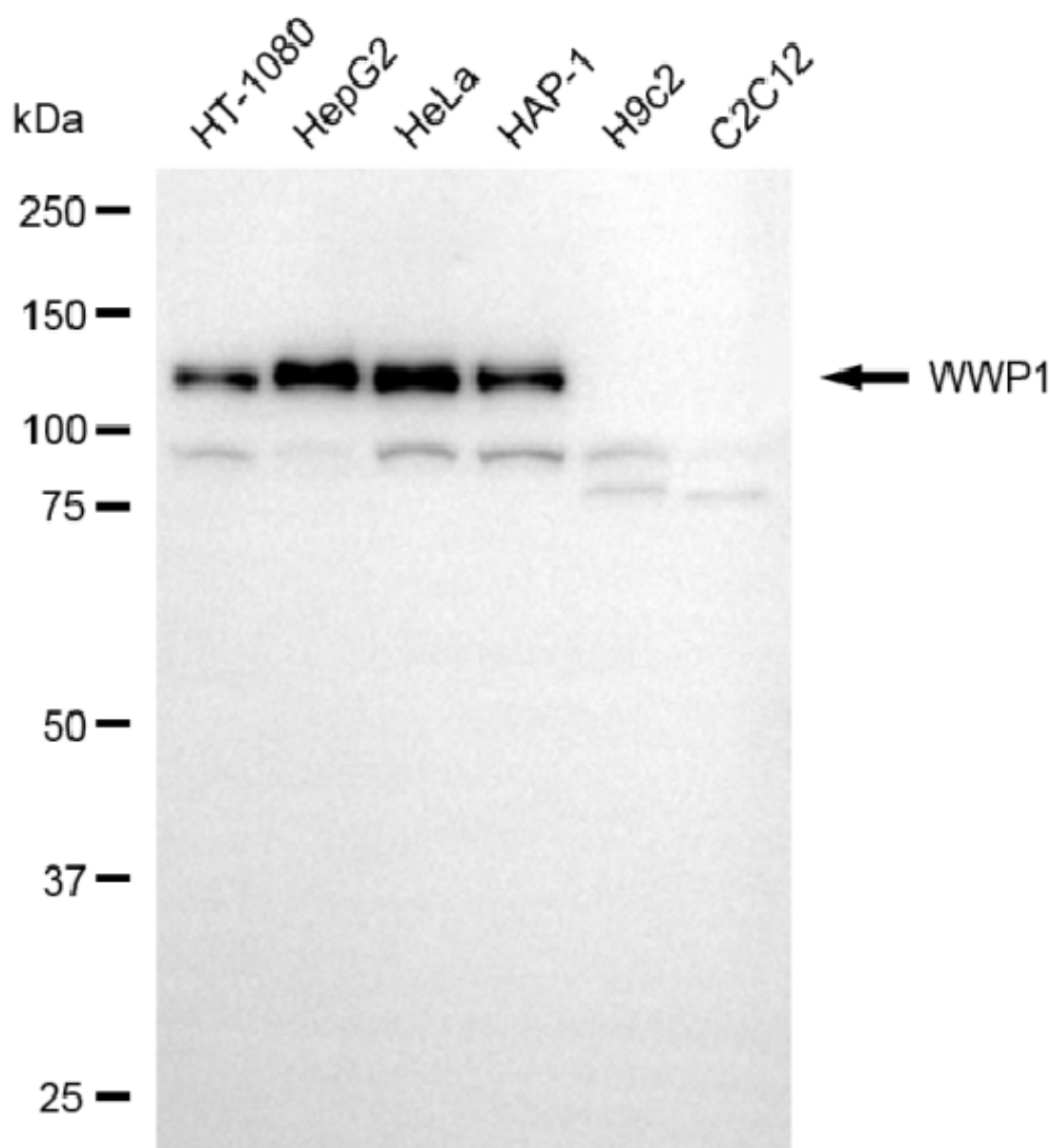
SUPPORT

SUPPORT@GENUINBIOTECH.COM
TEL: +1-540-855-7041

ORDERS

SALES@GENUINBIOTECH.COM
FAX: +1-540-855-7041

WWW.GENUINBIOTECH.COM



Copyright ©2025 Genuin Biotechnologies LLC

Western blotting analysis using anti-WWP1 antibody (Cat#5121). Total cell lysates (30 μ g) from various cell lines were loaded and separated by SDS-PAGE. The blot was incubated with anti-WWP1 antibody (Cat#5121, 1:2,000) and HRP-conjugated goat anti-mouse secondary antibody (Cat#101, 1:20,000) respectively. Image was developed using FeQ™ ECL Substrate Kit (Cat#226).

SUPPORT

SUPPORT@GENUINBIOTECH.COM
TEL: +1-540-855-7041

ORDERS

SALES@GENUINBIOTECH.COM
FAX: +1-540-855-7041

WWW.GENUINBIOTECH.COM