

## Catalog #: 51245

### Aliases

ILT2; LIR1; MIR7; Leukocyte immunoglobulin-like receptor subfamily B member 1; LIR-1; Leukocyte immunoglobulin-like receptor 1; CD85 antigen-like family member J; Immunoglobulin-like transcript 2; ILT-2; Monocyte/macrophage immunoglobulin-like receptor 7; MIR-7; CD85j

### Background

Gene Name: LILRB1

NCBI Gene Entry: [10859](#)

UniProt Entry: [Q8NHL6](#)

### Application Information

Molecular Weight: Predicted, 70 kDa; observed, 100 kDa

Clonality: Rabbit polyclonal antibody

Species Reactivity: Human, mouse, rat

Applications Tested: Western blotting (WB), immunocytochemistry (IC)

### Immunogen

A synthesized peptide derived from human CD85j

### Isotype

Rabbit IgG

### Storage Buffer

Supplied in PBS (pH 7.3) containing 30% glycerol, and 0.01% sodium azide.

### Storage

Store at -20 °C for one year.

### Recommended Dilutions

Western Blotting (WB): 1:500-1:1,000

Immunocytochemistry (IC): 1:50-1:200

**Note:** This product is for research use only.

### Validation Data

---

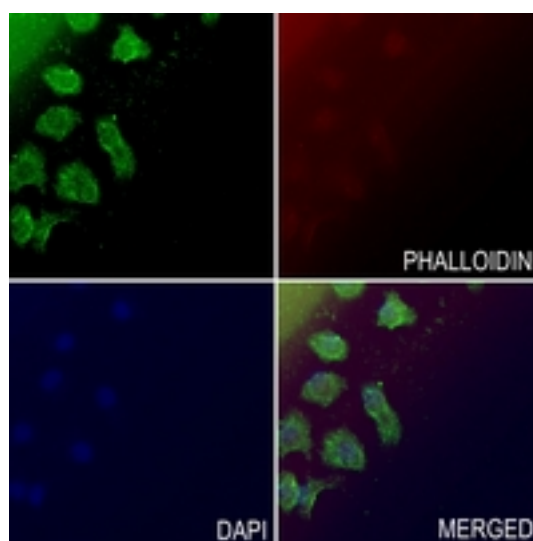
#### SUPPORT

SUPPORT@GENUINBIOTECH.COM  
TEL: +1-540-855-7041

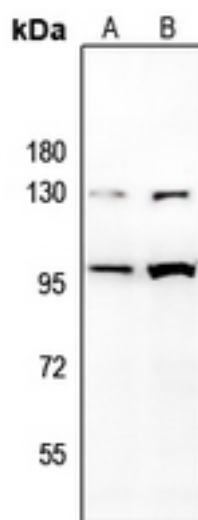
#### ORDERS

SALES@GENUINBIOTECH.COM  
FAX: +1-540-855-7041

[WWW.GENUINBIOTECH.COM](http://WWW.GENUINBIOTECH.COM)



Immunocytochemical analysis of CD85j staining in SGC7901 cells. Formalin-fixed cells were permeabilized with 0.1% Triton X-100 in TBS for 5-10 minutes and blocked with 3% BSA-PBS for 30 minutes at room temperature. Cells were probed with the primary antibody in 3% BSA-PBS and incubated overnight at 4 °C in a humidified chamber. Cells were washed with PBST and incubated with a AF488-conjugated secondary antibody (green) in PBS at room temperature in the dark. Phalloidin - AF594 was used to stain Actin filaments (red). DAPI was used to stain the cell nuclei (blue).



Western blotting analysis of CD85j expression in HuT78 (A), Myla2059 (B) whole cell lysates.